

CERTIFICATE OF LOCATION OF GOVERNMENT CORNER

East Quarter Corner of Section 10
Township 138 N , Range 31 W , 5th P.M.
STATE OF MINNESOTA, COUNTY OF Cass



A000597013

OFFICE OF THE COUNTY RECORDER
CASS COUNTY, MINNESOTA
CERTIFIED, FILED, AND/OR
RECORDED ON

10/3/2013 2:30:54 PM

AS DOC #: A000597013

PAGES: 2

REC FEES: 0.00

KATHRYN M. NORBY
CASS COUNTY RECORDER

BY SR Dep

Page 1 of 2 A000597013

On 10/30/2012, found a(n): 2 1/4" Capped Iron Pipe up 1.0'
in Good Condition. DATE

- left monument as found
- removed monument (explain)
- lowered monument
- raised monument

On , set a(n):
DATE

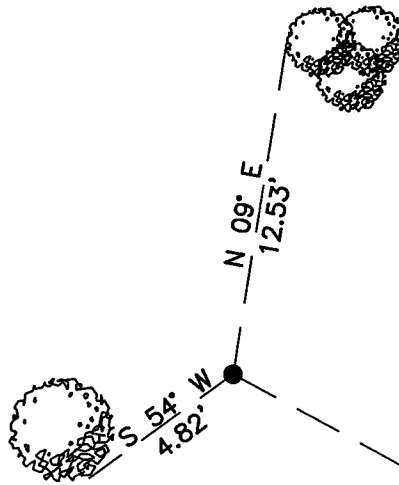
See "Statement of Evidence" for further details (on back)

(reserved for recording data)

WOODS

5" Triple Elm N&D West
face 1' up

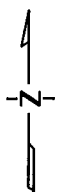
WOODS



16" Red Oak N&D SE face
1' up

12" Elm N&D South face
1' up

10 | 11



"SKETCH OF REFERENCE TIES"
(not to scale - bearings are magnetic)

Ties are measured to center of monument
unless otherwise noted.

UNITS = Metric English

CASS COUNTY SOUTH COORDINATES

Northing: 328749.123
Easting: 472476.552

NAD 83/2007 Adjustment.
Obtained by RTK GPS observations.

I hereby certify that this survey, plan, or report was prepared by me or under my direct supervision, and that I am a duly Licensed Land Surveyor under the laws of the State of Minnesota.

signature

2-1-13
date

Jarrett M. Leas, Minnesota License No. 42619



Statement of Evidence

East Quarter corner of Section 10, Township 138 North, Range 31 West, 5th Principal Meridian.

- Nov. 1870 T.B.Walker, General Land Office (GLO) Deputy Surveyor set a post for the original corner in his subdivision of this township and referenced it as follows:
10" Oak South 9 links 12" Oak N 11° E 38 links
Said records are on file at the Minnesota Historical Society, St. Paul, Minnesota, copies are filed with the Cass County Surveyor's Office (CCSO).
- May 1915 J.W. Curo, Cass County Surveyor, LS 1428, County Surveyor, County Resurvey, on file at the Cass County Records Office, in cabinet E, sheet 49 indicates a 2 1/4"X4' Iron Monument was set.
- Oct. 2012 A KLJ survey crew found a 2 1/4" capped Iron Pipe, and is witnessed with the ties shown on the front of this certificate. Jarrett Leas, RLS #42619, after analysis of record and survey information accepts this monument as the correct perpetuation of the corner.