

CERTIFICATE OF LOCATION OF GOVERNMENT CORNER

East Quarter Corner of Section 19
Township 139 N, Range 26 W, 5th P.M.
STATE OF MINNESOTA, COUNTY OF Cass



A000596804

OFFICE OF THE COUNTY RECORDER
CASS COUNTY, MINNESOTA
CERTIFIED, FILED, AND/OR
RECORDED ON

9/26/2013 2:30:54 PM

AS DOC #: A000596804

PAGES: 2

REC FEES: 0.00

KATHRYN M. NORBY
CASS COUNTY RECORDER

BY SR Dep

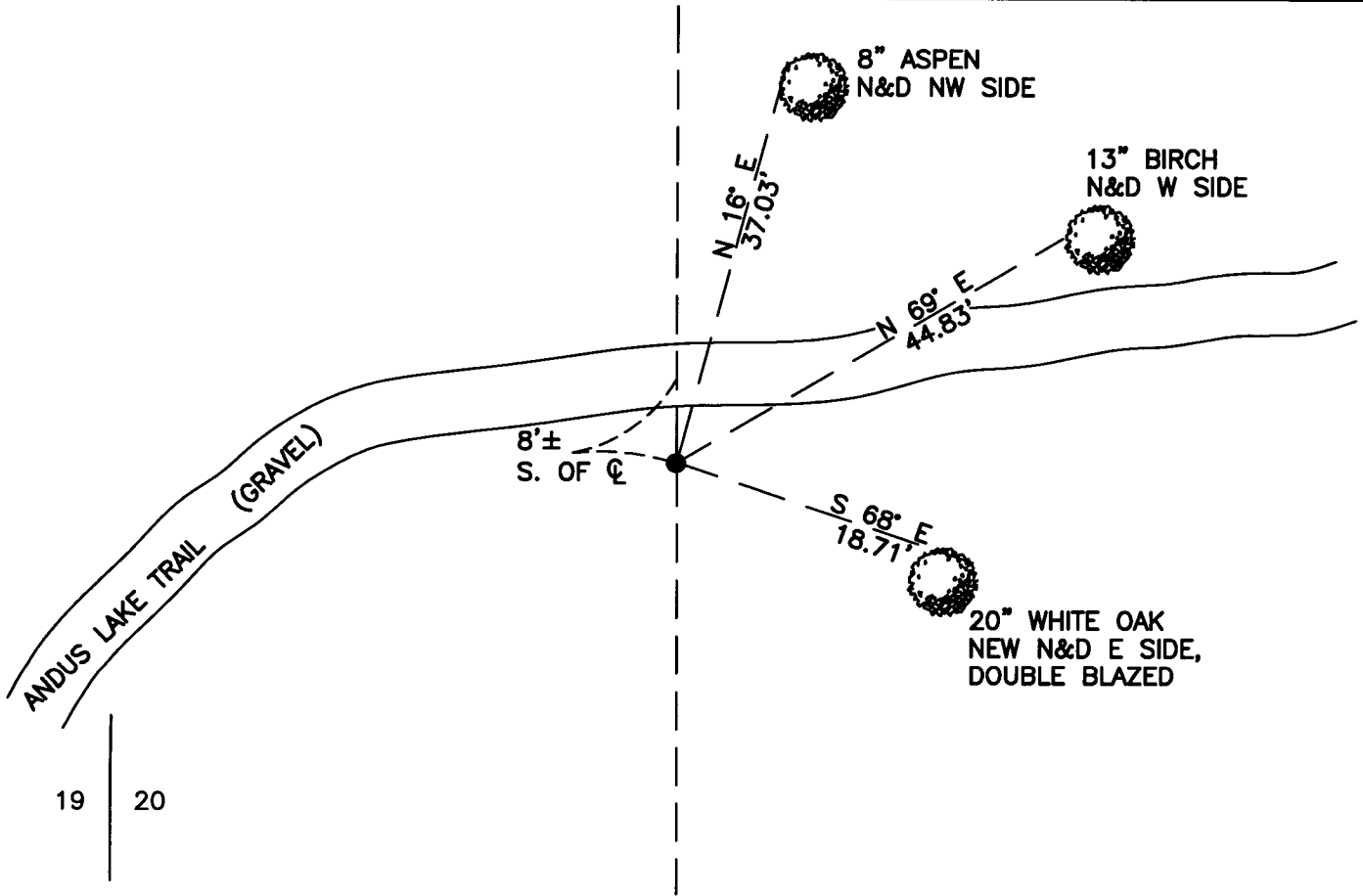
On 3/20/2013, found a(n): 24" Iron Pipe Marked RLS 9672
Lying Down.

- left monument as found
- removed monument (explain)
- lowered monument
- raised monument

On 3/20/2013, set a(n): 5/8x24" Rebar With Plastic Cap
Stamped "Leas MN 42619" up 0.2'.

See "Statement of Evidence" for further details (on back)

(reserved for recording data)



19 20

"SKETCH OF REFERENCE TIES" (not to scale - bearings are magnetic)

Ties are measured to center of monument unless otherwise noted.

UNITS = Metric English

CASS COUNTY SOUTH COORDINATES

Northing: 349524.415

Easting: 614563.918

NAD 83/2007 Adjustment.

Obtained by RTK GPS observations.

I hereby certify that this survey, plan, or report was prepared by me or under my direct supervision, and that I am a duly Licensed Land Surveyor under the laws of the State of Minnesota.

Jarrett M. Leas
signature

4-30-2013
date

Jarrett M. Leas, Minnesota License No. 42619

Page 1 of 2 A000596804



Statement of Evidence

East Quarter corner of Section 19, Township 139 North, Range 26 West, 5th Principal Meridian.

- 1863 The US General Land Office, in notes of the subdivision of Township 139 North, Range 26 West, set a post for the original corner and referenced it as follows:
10" Y. Pine N 67° E 35 links 6" Y. Pine N 82° W 13 links
Said records are on file with the Minnesota Historical Society, St. Paul, Minnesota, copies are filed with the Cass County Surveyor's Office (CCSO).
- 1985 W. Buckler, LS 9672, document number 285820, Plat of WANDRUS ESTATES, on file at the Cass County Records Office, indicates a set monument.
- 1986 W. Buckler, LS 9672, map on file in the CCSO, indicates subject corner in place.
- 1987 Walter Curo, LS 11395, Curo field book 315, page 38, on file in the CCSO, indicates a found monument at the subject corner.
- 2013 Jarrett Leas, LS 42619, March 20132, in correspondence with Mr. Buckler by telephone, determined the corner was set by Mr. Buckler circa mid 1980's and made the following accessories:
12" R. Oak southeast 18.50 feet
12" R. Oak ENE 33.85 feet
- 2013 A KLJ survey crew found a 24" iron pipe with plastic cap marked "RLS 9672" bent and lying down. Upon further inspection it was determined the base of the found pipe was vertical and the position matches plat irons from WANDRUS ESTATES. The pipe was removed and replaced with a 5/8" x 24" rebar with plastic cap stamped "Leas MN 42619", and is witnessed with the ties shown on the front of this certificate. Jarrett Leas, RLS #42619, after analysis of record and survey information accepts this monument as the correct perpetuation of the corner.