

# CERTIFICATE OF LOCATION OF GOVERNMENT CORNER

East Quarter Corner of Section 16  
Township 139 N, Range 26 W, 5th P.M.  
STATE OF MINNESOTA, COUNTY OF Cass



A000596800

OFFICE OF THE COUNTY RECORDER  
CASS COUNTY, MINNESOTA  
CERTIFIED, FILED, AND/OR  
RECORDED ON

9/26/2013 2:30:50 PM

AS DOC #: A000596800

PAGES: 2

REC FEES: 0.00

KATHRYN M. NORBY  
CASS COUNTY RECORDER

BY SR Dep

On 3/19/2013, found a(n): 7/8" Iron Pipe With Plastic Cap  
Stamped "RLS 9672" up 0.1'.

- left monument as found
- lowered monument
- removed monument (explain)
- raised monument

On \_\_\_\_\_, set a(n): \_\_\_\_\_

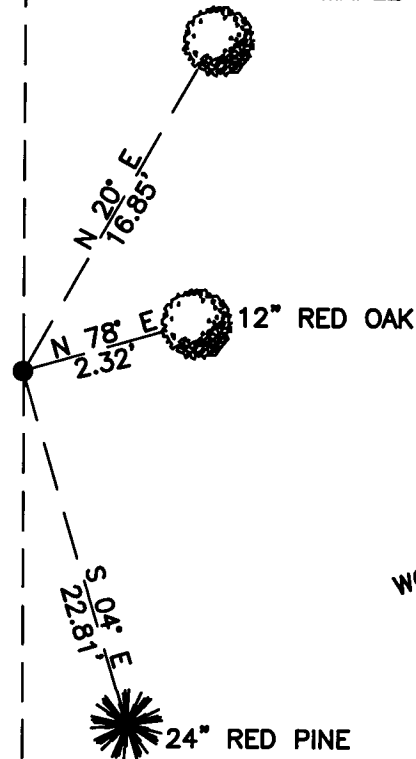
See "Statement of Evidence" for further details (on back)

(reserved for recording data)

NOTE: ALL TIES ARE DOUBLE  
BLAZED AND HAVE 2006 CASS  
COUNTY BEARING TREE TAGS

WOODS

10" MAPLE



16 | 15

## "SKETCH OF REFERENCE TIES" (not to scale - bearings are magnetic)

Ties are measured to center of monument unless otherwise noted.

UNITS =  Metric  English

### CASS COUNTY SOUTH COORDINATES

Northing: 354987.421

Easting: 625522.220

NAD 83/2007 Adjustment.

Obtained by RTK GPS observations.

I hereby certify that this survey, plan, or report was prepared by me or under my direct supervision, and that I am a duly Licensed Land Surveyor under the laws of the State of Minnesota.

*Jarrett M. Leas*  
signature

4-30-2013  
date

Jarrett M. Leas, Minnesota License No. 42619

Page 1 of 2 A000596800

Statement of Evidence

**East Quarter corner of Section 16, Township 139 North, Range 26 West, 5th Principal Meridian.**

- 1863 The US General Land Office, in notes of the subdivision of Township 139 North, Range 26 West, set a post for the original corner and referenced it as follows:  
8" Maple      S 80° E      61 links      18" Y. Pine      N 82° W      50 links  
Said records are on file with the Minnesota Historical Society, St. Paul, Minnesota, copies are filed with the Cass County Surveyor's Office (CCSO).
- 1938 The CCC Washburn Lake field book 9, on file at the DNR office in Brainerd, indicates in a subdivision of Section 16 a temporary corner was set 2640' from the south.
- 1940 The CCC Washburn Lake field book 8, on file at the DNR office in Brainerd, indicates an approximate corner was set at 2640' from the south.
- 2006 The CCSO, job file number 2006.054, on file at the CCSO, found a 7/8" iron pipe capped RLS #9672 (W. Buckler) up 0.1'. Corner location tags (CLT) were added to the following existing witness trees:  
8" Maple      N 20° E      16.85 feet      10" R. Oak      N 78° E      2.32 feet  
23" N. Pine      S 4° E      22.81 feet
- 2013 A KLJ survey crew found a 7/8" iron pipe with plastic cap stamped "RLS 9672", and is witnessed with ties the CCSO noted above and shown on the front of this certificate. Jarrett Leas, RLS #42619, after analysis of record and survey information accepts this monument as the correct perpetuation of the corner.