

CERTIFICATE OF LOCATION OF GOVERNMENT CORNER

North Quarter Corner of Section 3
Township 137 N . Range 32 W . 5th P.M.
STATE OF MINNESOTA, COUNTY OF CASS.



A000596604

OFFICE OF THE COUNTY RECORDER
CASS COUNTY, MINNESOTA
CERTIFIED, FILED, AND/OR
RECORDED ON

9/20/2013 9:22:56 AM

AS DOC #: A000596604

PAGES: 2

REC FEES: 0.00

KATHRYN M. NORBY
CASS COUNTY RECORDER

BY SR Dep

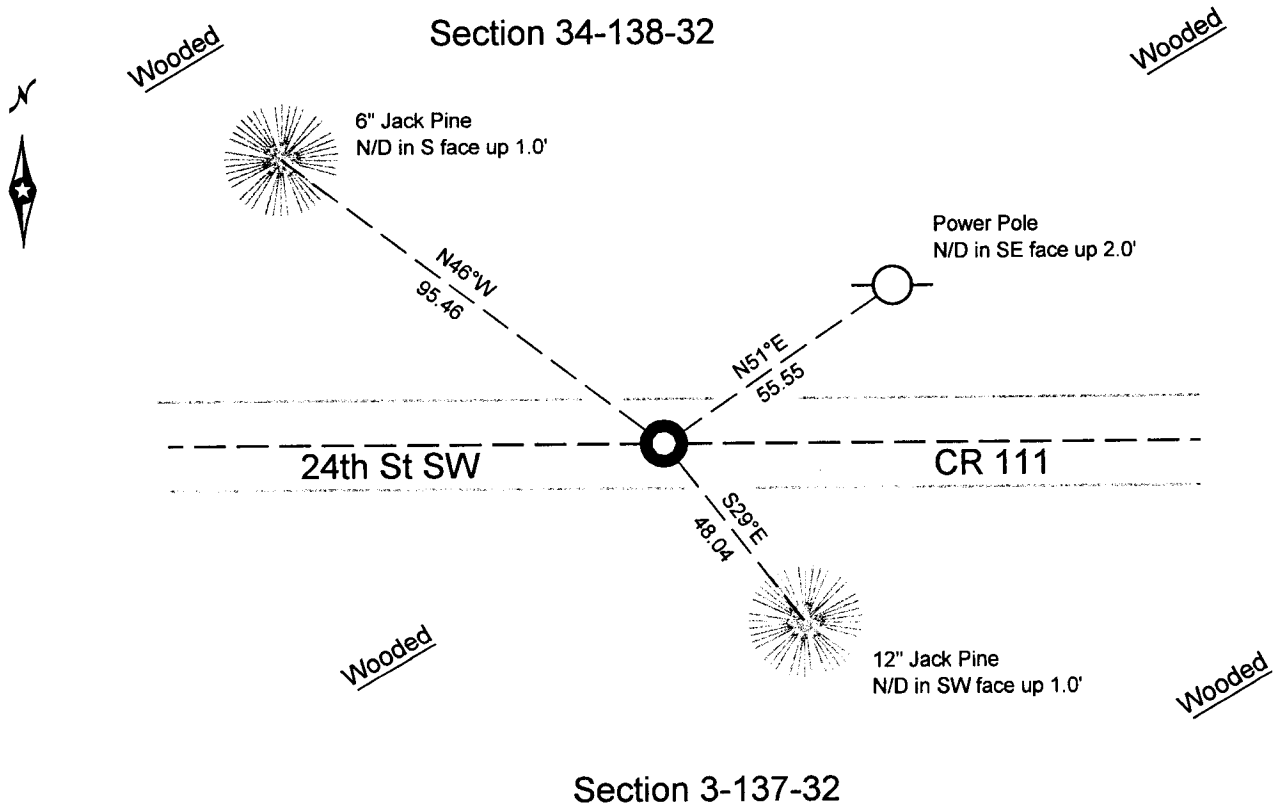
On 5/12/2010 found a(n): 1/2" pipe with RLS cap 17253 down 6 inches, bent badly.

- left monument as found
- lowered monument
- removed monument (explain)
- raised monument

On 5/12/2010 set a(n): 1/2" Iron pipe capped "Leas 42619", down 6 inches.

See "Statement of Evidence" for further details (on back)

reserved for recording data



"SKETCH OF REFERENCE TIES"

(not to scale - bearings are magnetic)

Ties are measured to center of monument unless otherwise noted.

UNITS = Metric English

CASS COUNTY COORDINATES, SOUTH ZONE

Northing: 304350.580

Easting: 438289.214

NAD 83, HARN 1996 Adjustment.

Obtained by RTK GPS observations.

I hereby certify that this document and the data contained herein was prepared by me or under my direct supervision, and that I am a duly Licensed Land Surveyor under the laws of the State of Minnesota

James Kramer
signature

James Kramer, Minnesota License No. 23668

7-11-2013

Date

Page 1 of 2 A000596604

**Index No. 13732A.0-15.0**Statement of Evidence**North Quarter Corner of Section 3, Township 137 North, Range 32 West, 5th Principal Meridian.**

- 1860 Wood Post set to mark the corner, referenced as follows:
 10" Pitch Pine N 7 deg. W 12 links (7.92 feet)
 4" Pitch Pine S 23 deg. E 19 links (12.54 feet)
 *Said records are on file with the Secretary of State, St Paul, Minnesota, copies are filed
 With the Cass County Surveyor's Office (CCSO).*
- 2010 Jarrett Leas, RLS 42619, recovered a 1/2" iron pipe with RLS cap 17253, down 0.6', bent
 badly. Mr. Leas replaced recovered monument with a 1/2" iron pipe with RLS cap
 42619, referenced as follows:
 6" Jack Pine N 46 deg. W 95.46 feet
 Power Pole N 51 deg. E 55.55 feet
 12" Jack Pine S 29 deg. E 48.04 feet

The monument recovered, and established references for the position are shown on the face of this document.

Analysis of the recovered data, field evidence and survey measurements, indicate that the monument recovered by Jarrett Leas in 2010 is the correct perpetuation of this corner.