

# CERTIFICATE OF LOCATION OF GOVERNMENT CORNER

North Quarter corner of Section 4, Township 141 N., Range 30 W., 5th P.M.  
 State of Minnesota, County of Cass

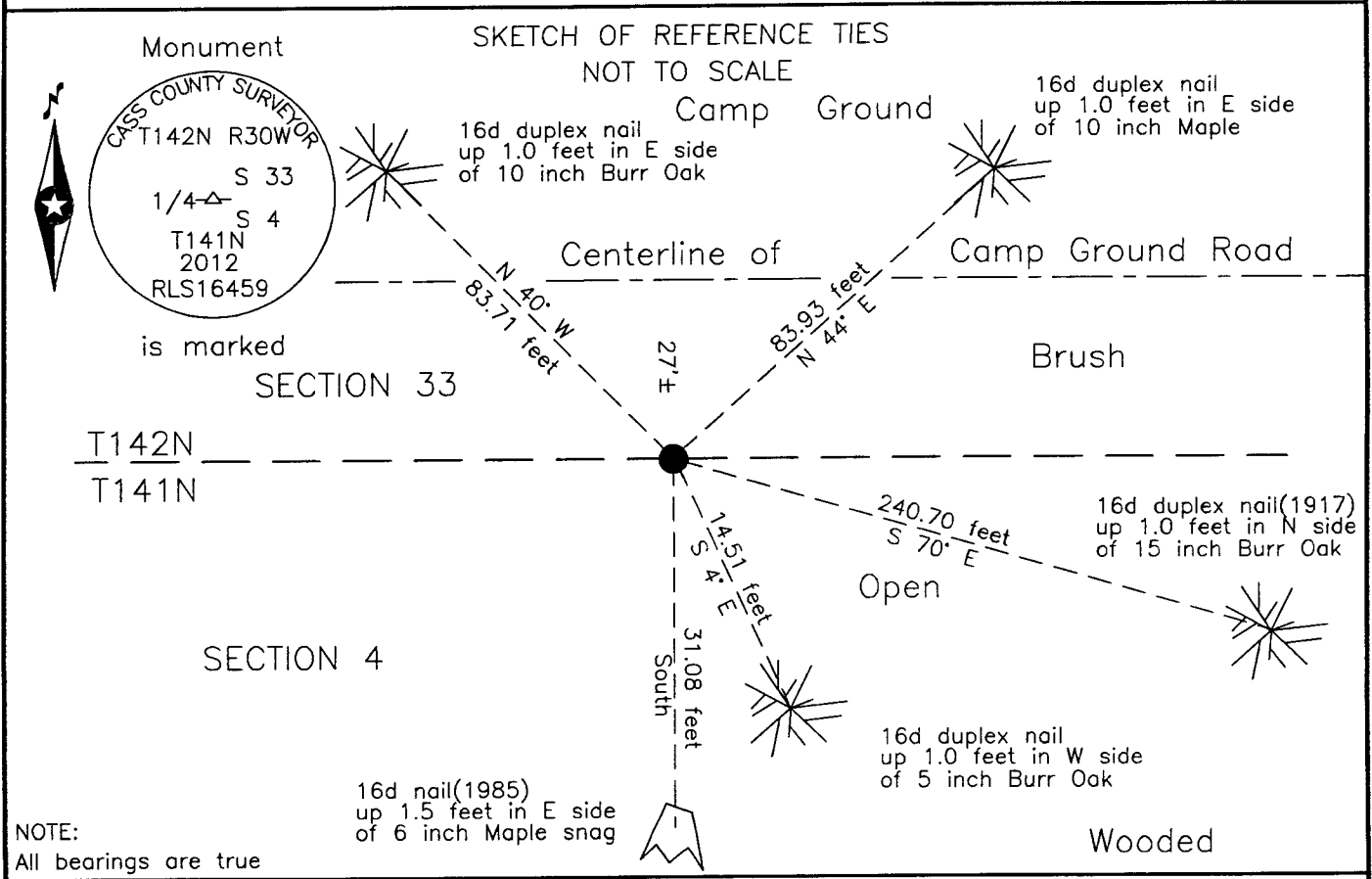
At the corner location shown on the sketch:

On March 25 2013 found a Cass County Aluminum Monument, down 0.2 foot

left monument as found     lowered monument     removed monument (explain)

On \_\_\_\_\_ placed \_\_\_\_\_

Page 1 of 2    A000596599



NOTE:  
All bearings are true

Statement of evidence relative to this corner location is on the back of this page.

I hereby certify that this survey, plan or report was prepared by me or under my direct supervision and that I am a duly Licensed Land Surveyor under the laws of the State of Minnesota.  
 I further certify that this United States public land survey monument record is correct and complete to the best of my knowledge and belief.

*Patrick A. Trottier*  
 Patrick A. Trottier, PLS  
 Date 9-03-13 MN License No. 41002



**A000596599**  
**OFFICE OF THE COUNTY RECORDER**  
**CASS COUNTY, MINNESOTA**  
**CERTIFIED, FILED, AND/OR**  
**RECORDED ON**  
**9/20/2013 9:22:51 AM**  
**AS DOC #: A000596599**  
**PAGES: 2**  
**REC FEES: 0.00**  
**KATHRYN M. NORBY**  
**CASS COUNTY RECORDER**  
 BY SR Dep



**Index No. A.0-11.0**

Statement of Evidence

**North Quarter corner of Section 4, Township 141 North, Range 30 West, 5th Principal Meridian.**

- Aug. 1873 P.H. Conger, General Land Office (GLO) Deputy Surveyor, running the north line of the Township, set a post for the original corner and referenced it as follows:  
 5" B. Oak North 5 links (3.30 feet) 10" Poplar S 4 1/2° E 24 links (15.84 feet)
- Aug. 1917 A.N. Kimmell, U.S. Cadastral Engineer, GLO, in the notes of the Resurvey of part Township 142 North, Range 30 West, Field Notes, page 22 "Proportional distance. Set an iron post, 3 ft. long, 1 in. dia., 30 ins. in the ground, with brass cap". He lists new witnesses as follows:  
 8" W. Oak S 70 1/2° E 364 links (240.24 feet) 14" R. Oak N 82 1/4° E 362 links (238.92 feet)  
 The above records are on file with the Minnesota Historical Society, St. Paul, Minnesota, copies are filed with the Cass County Surveyors Office (CCSO).
- Feb. 1985 T. Freeman, Technician CCSO, records of the CCSO, found the GLO brass capped monument, the top 8 inches are bent west, and added the following witnesses:  
 8" W. Oak S 82° E 79.60 feet 14" W. Oak (1917) S 70° E 240 feet  
 4" Maple South 31.08 feet
- June 2012 B.Hippen, CCSO technician, records of the CCSO, found the 1917 Oak and remains of the 1985 Maple, at the intersection of these distances, found discolored soil and rust which continued down for 2.6 feet. Set an Aluminum Cass County Monument, down 0.2 foot, 27 feet, more or less south of centerline of Camp Ground Road, witnesses as follows:  
 15" B. Oak (1917) S 70° E 240.70 feet 6" Maple snag (1985) South 31.08 feet  
 10" B. Oak N 40° W 83.71 feet 10" Maple N 44° E 83.93 feet  
 5" B. Oak S 04° E 14.51 feet
- March 2013 Patrick Trottier, PLS 41002, found the Aluminum Cass County Monument and witnesses from 2012.

**Analysis of the recovered record data, field evidence and survey measurements, indicates that the monument set by the CCSO in 2012 and recovered in 2013 is the accepted location of this corner.**