

CERTIFICATE OF LOCATION OF GOVERNMENT CORNER

Northeast Corner of Section 2

Township 139 N, Range 25 W, 5th P.M.

STATE OF MINNESOTA, COUNTY OF Cass



A000596382

OFFICE OF THE COUNTY RECORDER
CASS COUNTY, MINNESOTA
CERTIFIED, FILED, AND/OR
RECORDED ON

9/13/2013 10:35:22 AM

AS DOC #: A000596382

PAGES: 2

REC FEES: 0.00

KATHRYN M. NORBY
CASS COUNTY RECORDER

BY SR Dep

On 4/10/2013, found a(n): 3/4" Rebar With Plastic Cap

Stamped "MN DNR LS 16098" up 0.3' in Black Spruce Swamp.

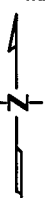
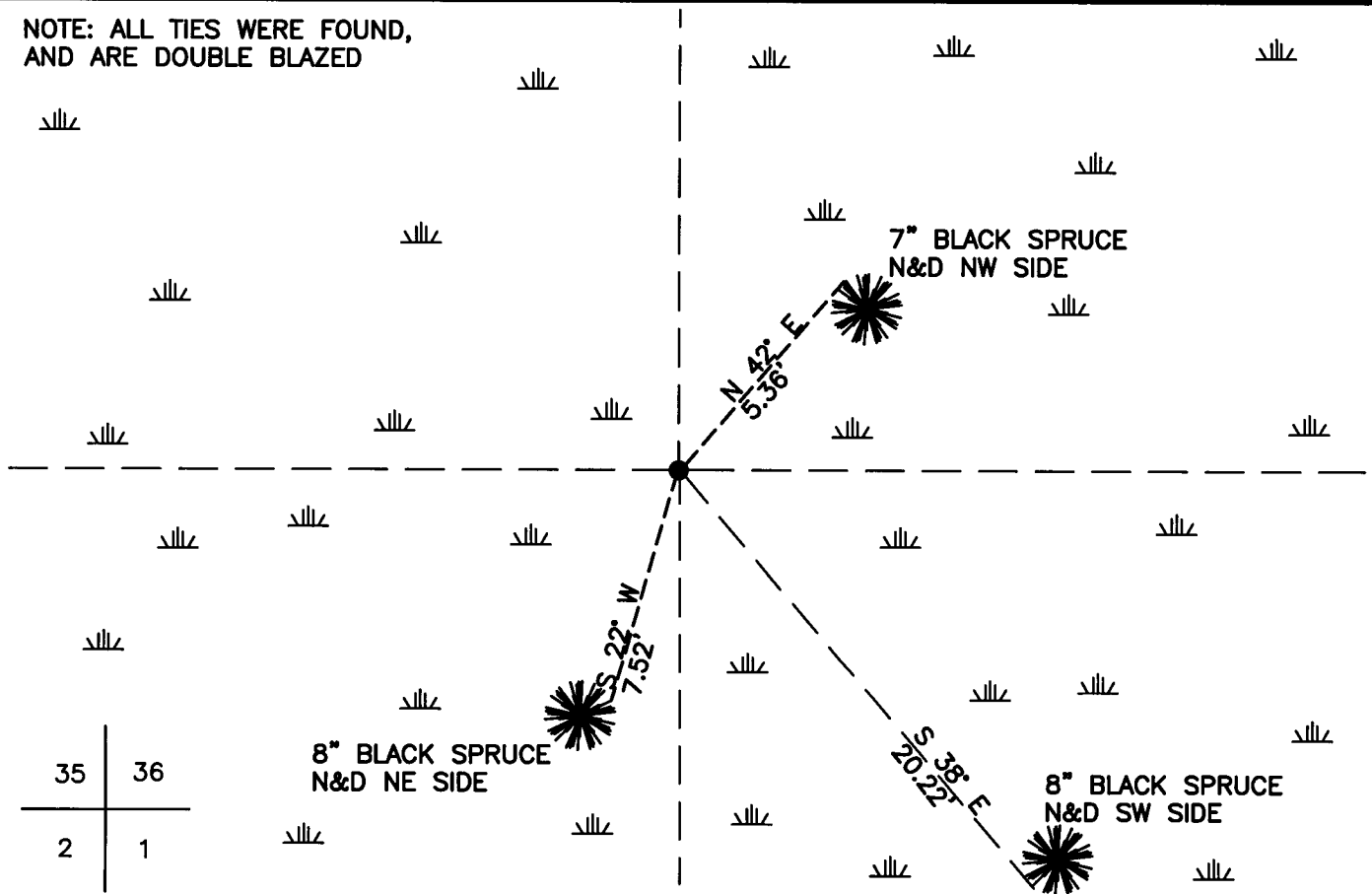
- left monument as found
- lowered monument
- removed monument (explain)
- raised monument

On _____, set a(n): _____

See "Statement of Evidence" for further details (on back)

(reserved for recording data)

NOTE: ALL TIES WERE FOUND,
AND ARE DOUBLE BLAZED



"SKETCH OF REFERENCE TIES"
(not to scale - bearings are magnetic)

Ties are measured to center of monument
unless otherwise noted.

UNITS = Metric English

CASS COUNTY SOUTH COORDINATES

Northing: 368177.548

Easting: 667648.324

NAD 83/2007 Adjustment.

Obtained by RTK GPS observations.

I hereby certify that this survey, plan, or report was prepared by me or under my direct supervision, and that I am a duly Licensed Land Surveyor under the laws of the State of Minnesota.

signature

5-31-13
date

Jarrett M. Leas, Minnesota License No. 42619

Page 1 of 2 A000596382



Statement of Evidence

Northeast corner of Section 2, Township 139 North, Range 25 West, 5th Principal Meridian.

1863 The US General Land Office, in notes of the subdivision of Township 139 North, Range 25 West, set a post for the original corner and referenced it as follows:

6" Spruce	N 60° E	12 links	6" Aspen	N 60° W	11 links
4" Tamarack	S 80° E	12 links	5" Tamarack	S 10° W	17 links

Said records are on file with the Minnesota Historical Society, St. Paul, Minnesota, copies are filed with the Cass County Surveyor's Office (CCSO).

1916 John Greene, Survey Record no. 347, Book B, page 530, on file in the CCSO, indicates finding three bearing trees, "standing and in good state of preservation." New bearing trees were set as follows:

6" Spruce	S 58° E	81 feet	6" Tamarack	S 88° W	122.6 feet
9" N. Pine	N 67° E	161 feet			

1936 The CCC Washburn Lake field book 3, page 14, on file at the DNR office in Brainerd, indicates at 5240' from the south, a square stake is 121' east and referenced by the following:

4" Spruce Metal Tag	N 3° E	12 feet	Tam. stub scribed	S 81° E	8 feet
Old Tam.	S 7° W	11 feet			

1937 The CCC Washburn Lake field book 1, page 12, on file at the DNR office in Brainerd, indicates at 79.47 chains from the east, finding a 5" Tamarack post and the SE and SW B.T.'s now 4&6".

2013 Jarrett Leas, LS 42619, April 2013, in correspondence with Joe Fleisher of the MN DNR, determined the corner was set by John Walker LS 16098 in August 2005. Mr. Walker and a survey crew found the original post covered with moss and a scribed bearing tree lying down also covered with moss. A ¾" capped rebar was set at the found post location.

2013 A KLJ survey crew found a ¾" rebar with a plastic cap stamped "MN DNR LS 16098", and is witnessed with the found ties shown on the front of this certificate. Jarrett Leas, RLS #42619, after analysis of record and survey information accepts this monument as the correct perpetuation of the corner.