

CERTIFICATE OF LOCATION OF GOVERNMENT CORNER

North Quarter Corner of Section 29
Township 139 N , Range 27 W , 5th P.M.
STATE OF MINNESOTA, COUNTY OF Cass



A000595706

OFFICE OF THE COUNTY RECORDER
CASS COUNTY, MINNESOTA
CERTIFIED, FILED, AND/OR
RECORDED ON

8/22/2013 9:17:39 AM

AS DOC #: A000595706

PAGES: 2

REC FEES: 0.00

KATHRYN M. NORBY
CASS COUNTY RECORDER

BY KF Dep

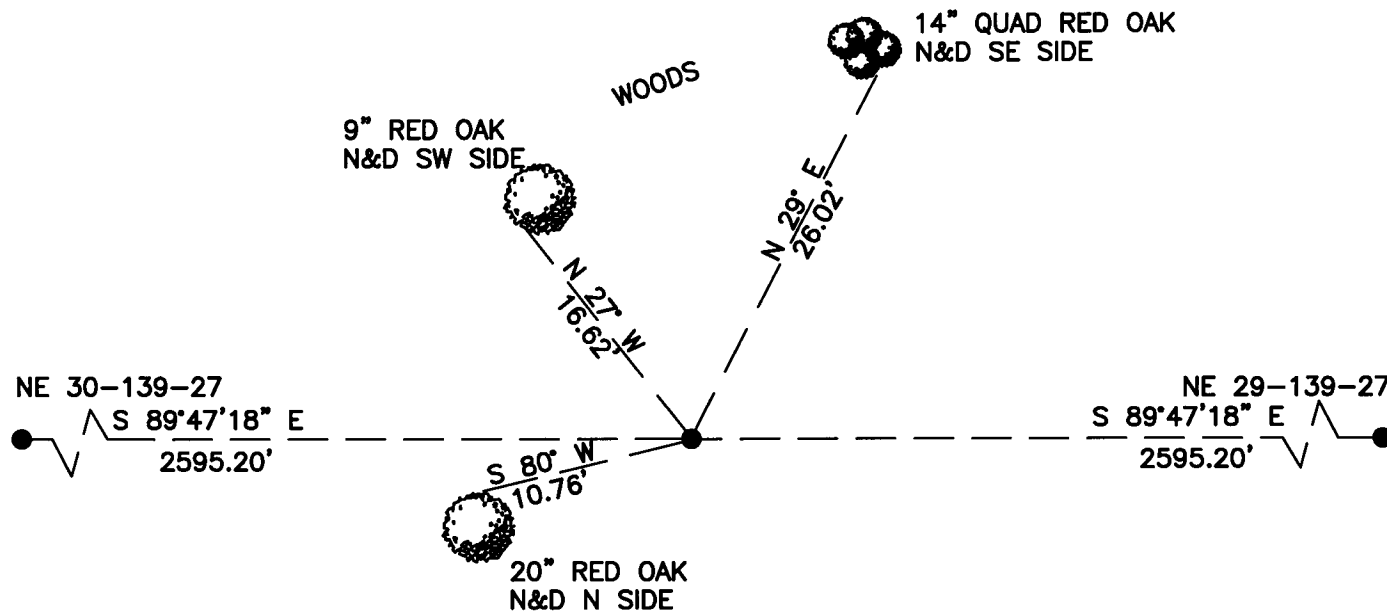
On _____, found a(n): _____
DATE

- left monument as found
- lowered monument
- removed monument (explain)
- raised monument

On 3/12/2013, set a(n): 5/8"x24" Rebar With Plastic Cap
DATE
Stamped "Leas MN 42619" up 0.5'.

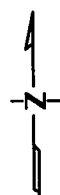
See "Statement of Evidence" for further details (on back)

(reserved for recording data)



20

29



"SKETCH OF REFERENCE TIES"
(not to scale - bearings are magnetic)

Ties are measured to center of monument unless otherwise noted.

UNITS = Metric English

CASS COUNTY SOUTH COORDINATES

Northing: 347019.709

Easting: 585855.743

NAD 83/2007 Adjustment.

Obtained by RTK GPS observations.

I hereby certify that this survey, plan, or report was prepared by me or under my direct supervision, and that I am a duly Licensed Land Surveyor under the laws of the State of Minnesota.

signature

4-30-2013
date

Jarrett M. Leas, Minnesota License No. 42619

Page 1 of 2
A000595706

