

CERTIFICATE OF LOCATION OF GOVERNMENT CORNER

East Quarter Corner of Section 19
Township 139 N, Range 27 W, 5th P.M.
STATE OF MINNESOTA, COUNTY OF Cass



A000595699

OFFICE OF THE COUNTY RECORDER
CASS COUNTY, MINNESOTA
CERTIFIED, FILED, AND/OR
RECORDED ON

8/22/2013 9:17:32 AM

AS DOC #: A000595699
PAGES: 2
REC FEES: 0.00

KATHRYN M. NORBY
CASS COUNTY RECORDER
BY KF Dep

On _____, found a(n): _____
DATE

- left monument as found
- removed monument (explain)
- lowered monument
- raised monument

On 3/11/2013, set a(n): 5/8"x24" Rebar With Plastic Cap
DATE
Stamped "Leas MN 42619" up 0.5'.

See "Statement of Evidence" for further details (on back)

(reserved for recording data)

LOGGED AREA

LOGGED AREA

LOGGED AREA

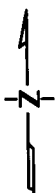
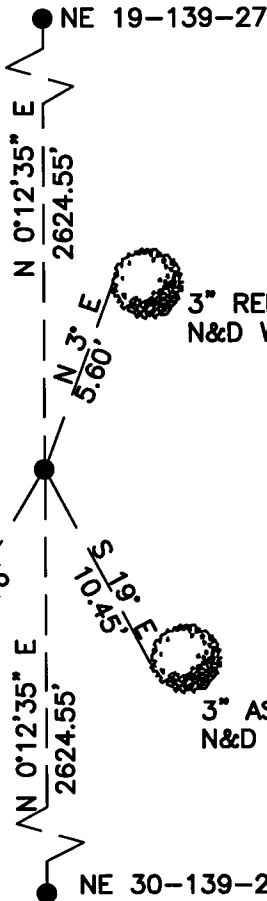
LOGGED AREA

19 | 20

4" ASPEN
N&D SE SIDE

3" RED OAK
N&D W SIDE

3" ASPEN
N&D W SIDE



"SKETCH OF REFERENCE TIES"
(not to scale - bearings are magnetic)

Ties are measured to center of monument unless otherwise noted.

UNITS = Metric English

CASS COUNTY SOUTH COORDINATES

Northing: 349653.829
Easting: 583270.171

NAD 83/2007 Adjustment.
Obtained by RTK GPS observations.

I hereby certify that this survey, plan, or report was prepared by me or under my direct supervision, and that I am a duly Licensed Land Surveyor under the laws of the State of Minnesota.

signature

4-30-2013
date

Jarrett M. Leas, Minnesota License No. 42619

Page 1 of 2 A000595699

