

CERTIFICATE OF LOCATION OF GOVERNMENT CORNER

Northeast Corner of Section 20
Township 139 N, Range 27 W, 5th P.M.
STATE OF MINNESOTA, COUNTY OF Cass



A000595690

OFFICE OF THE COUNTY RECORDER
CASS COUNTY, MINNESOTA
CERTIFIED, FILED, AND/OR
RECORDED ON

8/22/2013 9:17:23 AM

AS DOC #: A000595690

PAGES: 2

REC FEES: 0.00

KATHRYN M. NORBY
CASS COUNTY RECORDER

BY KF Dep

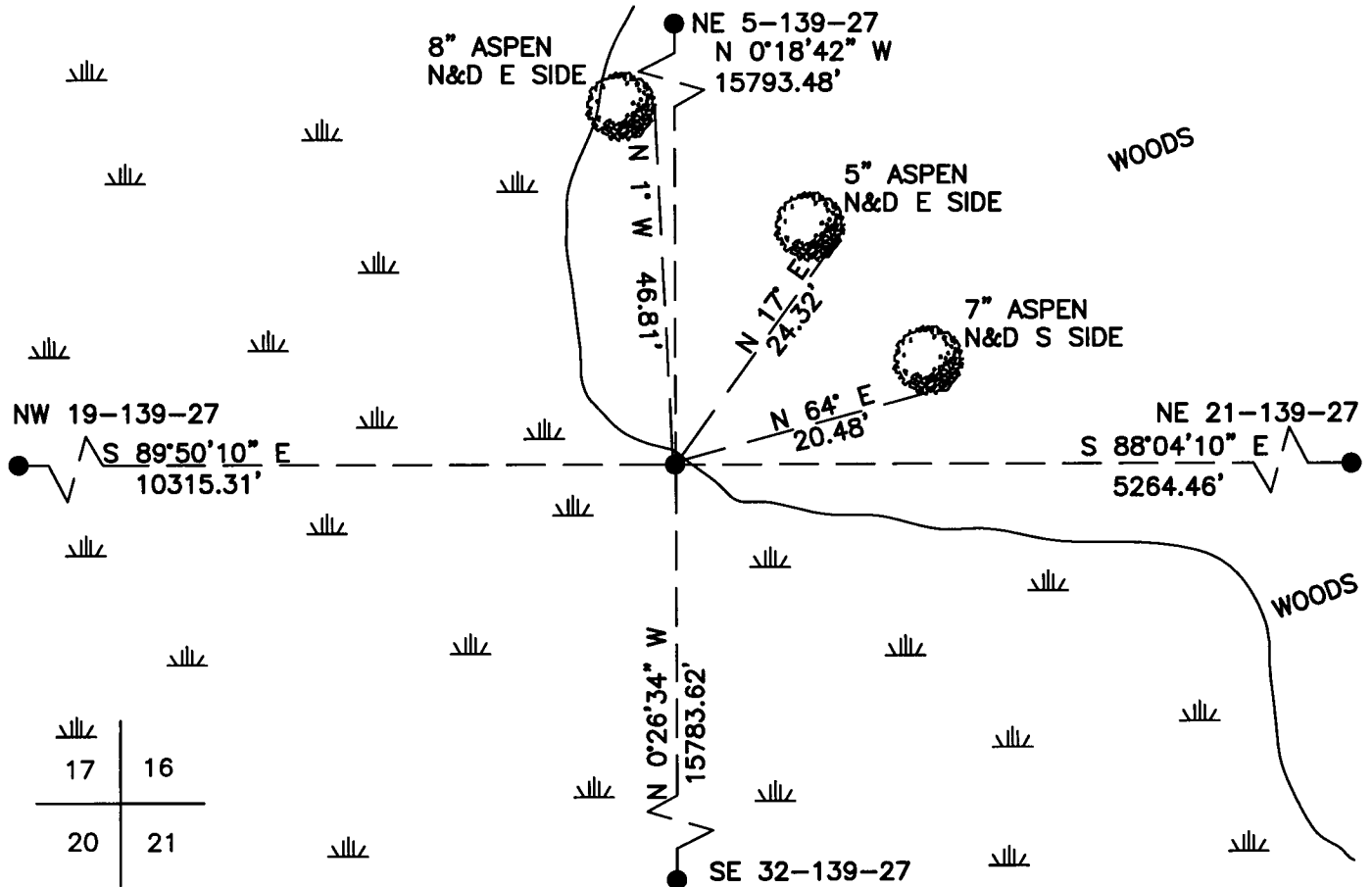
On _____, found a(n): _____
DATE

- left monument as found
- removed monument (explain)
- lowered monument
- raised monument

On 3/4/2013, set a(n): 5/8"x48" Rebar With Plastic Cap
DATE
Stamped "Leas MN 42619" up 1.0' in Edge of Swamp.

See "Statement of Evidence" for further details (on back)

(reserved for recording data)



"SKETCH OF REFERENCE TIES" (not to scale - bearings are magnetic)

Ties are measured to center of monument unless otherwise noted.

UNITS = Metric English

CASS COUNTY SOUTH COORDINATES

Northing: 352271.941
Easting: 588527.161

NAD 83/2007 Adjustment.
Obtained by RTK GPS observations.

I hereby certify that this survey, plan, or report was prepared by me or under my direct supervision, and that I am a duly Licensed Land Surveyor under the laws of the State of Minnesota.

signature

4-30-2013
date

Jarrett M. Leas, Minnesota License No. 42619

Page 1 of 2 A000595690



Statement of Evidence

Northeast corner of Section 20, Township 139 North, Range 27 West, 5th Principal Meridian.

- 1864 The US General Land Office, in notes of the subdivision of Township 139 North, Range 27 West, set a post for the original corner and referenced it as follows:
- | | | | | | |
|-------------|---------|-----------|-------------|---------|----------|
| 4" Tamarack | N 52° E | 15 links | 5" W. Birch | N 25° W | 67 links |
| 6" Tamarack | S 45° E | 280 links | 4" Tamarack | S 5° W | 47 links |
- Said records are on file with the Minnesota Historical Society, St. Paul, Minnesota, copies are filed with the Cass County Surveyor's Office (CCSO).
- 1909 John Curo, LS 1428, Survey Record Number 159, Book A, page 341, on file in the CCSO, indicates post was set, stating, "At the corner to sections 16,17,20,21 139-27 we find the N.W. and N.E. old Government bearing trees from which we set a 4x4x48 inch post for the true section corner".
- 1937 CCC Washburn Lake field book 1, page 8, on file at the DNR office in Brainerd show CCC personnel set an approximate corner 80 chains from the west. Page 28, shows they found line 82.99 chains from the south.
- 2013 KLJ field crews searched the area and found nothing. This corner was set lost by double proportion between the NE 5, NE 21, SE 32, and the NW 19. A 5/8" x 48" rebar with plastic cap stamped "Leas MN 42619" was set to mark the corner position and is witnessed with the ties shown on the front of this certificate. Jarrett Leas, RLS #42619, after analysis of record and survey information accepts this monument as the correct perpetuation of the corner.