

# CERTIFICATE OF LOCATION OF GOVERNMENT CORNER

Northeast Corner of Section 14  
Township 139 N, Range 27 W, 5th P.M.  
STATE OF MINNESOTA, COUNTY OF Cass



**A000595686**

OFFICE OF THE COUNTY RECORDER  
CASS COUNTY, MINNESOTA  
CERTIFIED, FILED, AND/OR  
RECORDED ON

8/22/2013 9:17:19 AM

AS DOC #: A000595686

PAGES: 2

REC FEES: 0.00

KATHRYN M. NORBY  
CASS COUNTY RECORDER

BY KF Dep

On \_\_\_\_\_, found a(n): \_\_\_\_\_  
DATE

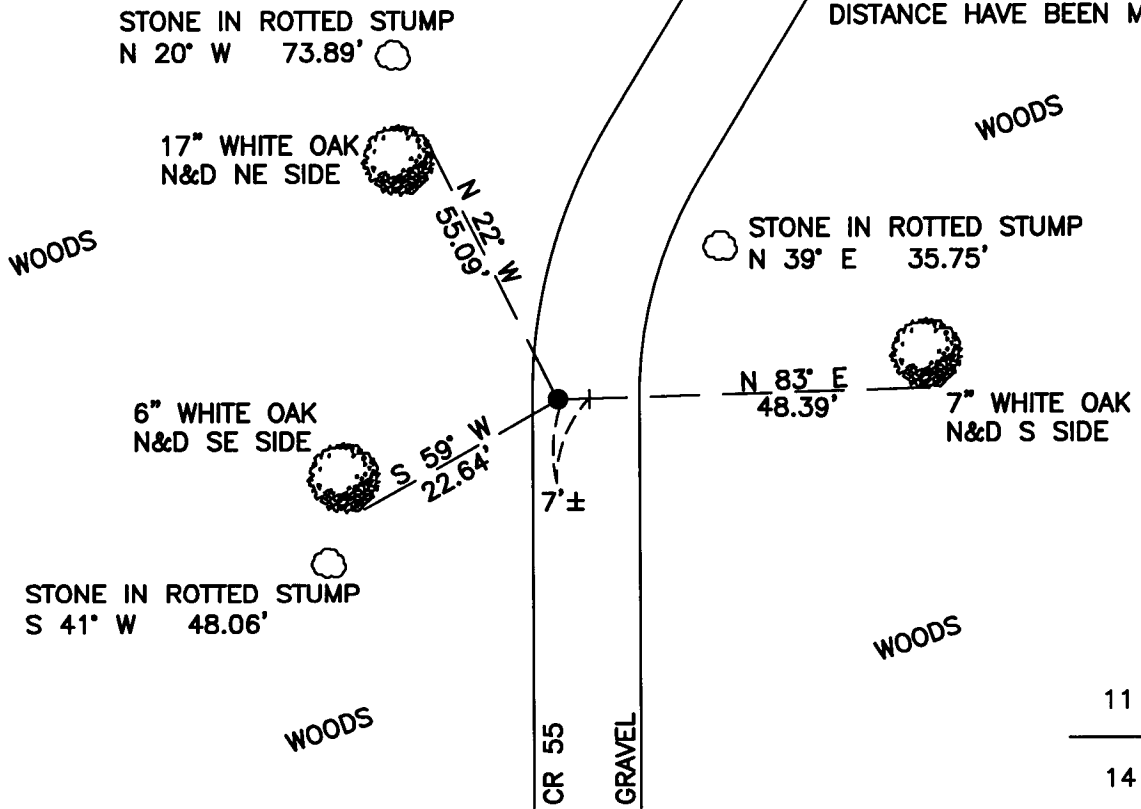
- left monument as found
- removed monument (explain)
- lowered monument
- raised monument

On 1/29/2013, set a(n): 5/8"x18" Rebar With Plastic Cap  
DATE  
Stamped "Leas MN 42619" Down 0.4' and 7'± West of C.

See "Statement of Evidence" for further details (on back)

(reserved for recording data)

NOTE: ALL STONES ARE FROM CURO TIE SHEET. BEARING AND DISTANCE HAVE BEEN MODIFIED



## "SKETCH OF REFERENCE TIES" (not to scale - bearings are magnetic)

Ties are measured to center of monument unless otherwise noted.

UNITS =  Metric  English

### CASS COUNTY SOUTH COORDINATES

Northing: 357175.254

Easting: 603952.194

NAD 83/2007 Adjustment.

Obtained by RTK GPS observations.

I hereby certify that this survey, plan, or report was prepared by me or under my direct supervision, and that I am a duly Licensed Land Surveyor under the laws of the State of Minnesota.

signature

4-30-2013  
date

Jarrett M. Leas, Minnesota License No. 42619

Page 1 of 2 A000595686



Statement of Evidence

**Northeast corner of Section 14, Township 139 North, Range 27 West, 5th Principal Meridian.**

1864 The US General Land Office, in notes of the subdivision of Township 139 North, Range 27 West, set a post for the original corner and referenced it as follows:

5" Basswood	N 77° E	24 links	6" Aspen	N 40° W	21 links
6" Maple	S 10° E	41 links	8" Maple	S 26° W	48 links

Said records are on file with the Minnesota Historical Society, St. Paul, Minnesota, copies are filed with the Cass County Surveyor's Office (CCSO).

1913 Harry Todd, Deputy County Surveyor, Survey Record Number 230, Book A, page 578, also found in Curo book 173, page 56, on file in the CCSO, indicates all four of the GLO bearing trees were recovered. A 3"x3"x36" stake was set from the 1864 ties. The following witness trees were made:

2" Poplar	S 35° E	28.70 feet	3" Poplar	N 35° E	35.00 feet
3" Poplar	N 52° W	23.70 feet	2" Poplar	S 74° W	29.75 feet

1922 John Greene, Deputy County Surveyor, Survey Record Number 551, Book D, page 195, on file in the CCSO, indicates finding the corner and a set a new stake.

1931 John Curo, LS 1428, Curo Book 227, pages 47 and 48, on file in the CCSO, indicates Mr. Curo set a 2" Poplar hub for the true corner position and referenced it with the following:

2 1/2" capped galv. Iron pipe	west	18.50 feet
stone in shell of a 40" W. Pine stump	N 19° 50' W	74.30 feet
stone in shell of a 40" W. Pine stump	N 39° 02' E	35.35 feet
stone in shell of a 40" W. Pine stump	S 42° 07' W	47.60 feet
2 1/2" Poplar	S 81° 23' E	28.25 feet

1936 CCC Washburn Lake field book no. 7, page 4, on file at the DNR office in Brainerd show personnel with the CCC found the corner 80.61 chains north of the SE of 14 in the west rut of the road. They recovered the iron pipe set by Curo in 1931 25 links west, moved by a grader.

2013 KLJ field crews searched the area and found all three of Curo's 1931 stones in very rotted remains of stumps which intersect and match Curo distances. This corner was set obliterated off of these ties. A 5/8" x 18" rebar with plastic cap stamped "Leas MN 42619" was set to mark the corner position and is witnessed with the ties shown on the front of this certificate. Jarrett Leas, RLS #42619, after analysis of record and survey information accepts this monument as the correct perpetuation of the corner.