

CERTIFICATE OF LOCATION OF GOVERNMENT CORNER

East Quarter of Section 34, Township 134 N., Range 31 W., 5th P.M.
 State of Minnesota, County of Cass

At the corner location shown on the sketch:

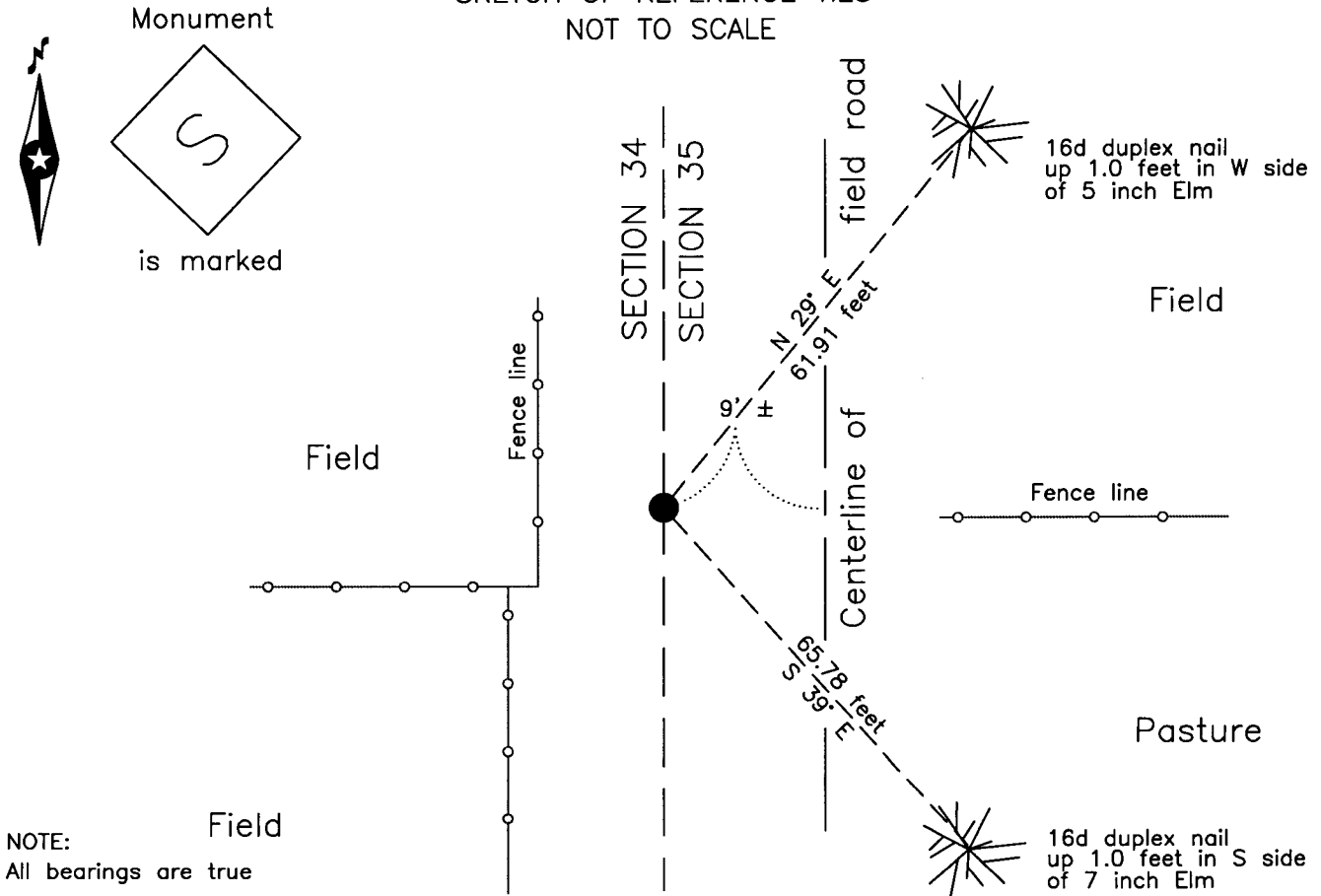
On 27 Aug 2003 found an 8 inch square stone, up 1.0 foot, 9 feet ±
West of centerline field road, 4.5 feet East of fence

left monument as found lowered monument removed monument (explain)

On _____ placed _____

Page 1 of 2 A000595685

SKETCH OF REFERENCE TIES
 NOT TO SCALE




NOTE:
 All bearings are true

Statement of evidence relative to this corner location is on the back of this page.

I hereby certify that this survey, plan or report was prepared by me or under my direct supervision and that I am a duly Licensed Land Surveyor under the laws of the State of Minnesota.

Terry L. Freeman

Terry L. Freeman, Cass County Surveyor
 Date 8/14/13 MN License No. 21367


A000595685
 OFFICE OF THE COUNTY RECORDER
 CASS COUNTY, MINNESOTA
 CERTIFIED, FILED, AND/OR
 RECORDED ON
 8/22/2013 9:17:18 AM
 AS DOC #: A000595685
 PAGES: 2
 REC FEES: 0.00
 KATHRYN M. NORBY
 CASS COUNTY RECORDER
 BY KF Dep

**Index No. X.0-17.0**Statement of Evidence**East Quarter corner of Section 34, Township 134 North, Range 31 West, 5th Principal Meridian.**

- June 1869 T.Walker, General Land Office (GLO) Deputy Surveyor set a post for the original corner in his subdivision of this township and referenced it as follows:
18" Aspen N 67° E 19 links (12.5 feet) 13" Oak S 50° W 10 links (6.6 feet)
Said records are on file at the Minnesota Historical Society, St. Paul, Minnesota, copies are filed with the Cass County Surveyor's Office (CCSO).
- July 1912 H.Todd, Cass County Deputy Surveyor, Survey Record No.193, Book A, page 476-477, on file in the CCSO, states "We find the oak, and the roots of the Aspen from which we set a 2 1/2 x 36 inch galvanized iron post for the true 1/4 corner," and put in the following new bearing trees:
5" Poplar S 25°40' W 10.40 feet 5" Poplar N 80°23' E 22.80 feet
- May 1986 T.Freeman, technician, CCSO, and G. Williams, backhoe operator, Land Corner Record, on file in the CCSO, states Found stone up 1.5' 10' +,- West of centerline trail in line with fence East.
- Aug. 2003 B.Hippen and T.Anderson, technicians, CCSO, notes on file in the CCSO, found an 8 x 8 inch stone, up 1.0 foot, 9 feet +,- West of field road, on fence line East and 1 foot North of fence to West.
- July 2013 B.Hippen, CCSO technician, records of the CCSO, found the monument and witnesses from 2003. The monument, recovered and established references for the position are shown on the face of this document.

Analysis of the recovered record data, field evidence and survey measurements, indicates that the monument recovered by CCSO in 1986 is the correct perpetuation of this corner.

County Coordinates (Cass County South)

Northing 180269.78

Easting 476487.71