

CERTIFICATE OF LOCATION OF GOVERNMENT CORNER

Northeast corner of Section 33, Township 134 N., Range 31 W., 5th P.M.

State of Minnesota, County of Cass

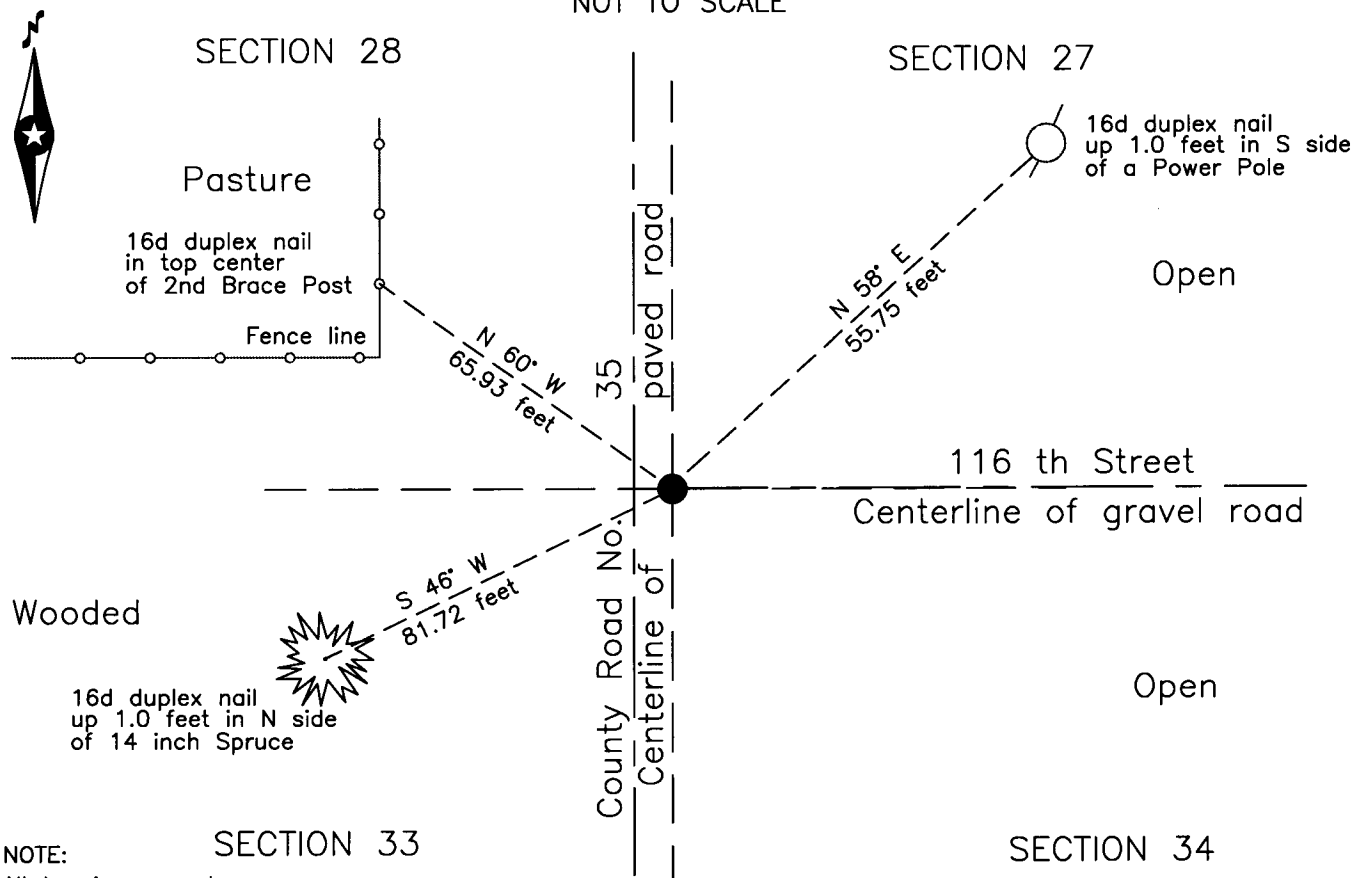
At the corner location shown on the sketch:

On 21 Mar 2001 found a CIM, down 1.0 foot, on centerline of County Road
Number 35 and centerline 116 th Street.

left monument as found lowered monument removed monument (explain)

On 24 Nov 2010 placed a Mag nail, flush, 1 foot± East of centerline of County
Road Number 35 and centerline 116 th Street.

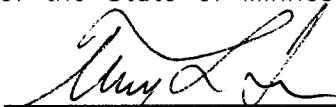
SKETCH OF REFERENCE TIES
NOT TO SCALE



NOTE: SECTION 33
All bearings are true

Statement of evidence relative to this corner location is on the back of this page.

I hereby certify that this survey, plan or report was prepared by me or under my direct supervision and that I am a duly Licensed Land Surveyor under the laws of the State of Minnesota.


 Terry L. Freeman, Cass County Surveyor
 Date 8/14/13 MN License No. 21367



A000595683
OFFICE OF THE COUNTY RECORDER
CASS COUNTY, MINNESOTA
CERTIFIED, FILED, AND/OR
RECORDED ON
8/22/2013 9:17:16 AM
AS DOC #: A000595683
PAGES: 2
REC FEES: 0.00
KATHRYN M. NORBY
CASS COUNTY RECORDER
 BY KF Dep

Page 1 of 2 A000595683



Index No. V.0-13.0

Statement of Evidence

Northeast corner of Section 33, Township 134 North, Range 31 West, 5th Principal Meridian.

June 1869 T.Walker, General Land Office (GLO) Deputy Surveyor set a post for the original corner in his subdivision of this township and referenced it as follows:
18" Aspen N 78° W 28 links (18.5 feet) 6" Aspen S 18° E 18 links (11.9 feet)
12" Aspen N 10° E 60 links (39.6 feet) 5" OakS 63° W 18 links (11.9 feet)
Said records are on file at the Minnesota Historical Society, St. Paul, Minnesota, copies are filed with the Cass County Surveyor's Office (CCSO).

July 1912 J.Curo, LS 1428, Cass County Surveyor, Survey Record No.193, Book A, page 476, on file in the CCSO, states "the corner of Sections 27-28-33-34, T.134 R.31 previously established from an old gov't bearing tree by Curo, who set a hub and tack, and put in the following bearings to tack heads":
6" Fence Post N 45°04' E 37.18 feet 6" Telephone pole N 51°47' W 43.83 feet
6" Fence Post S 41°56' E 53.10 feet
"We find the hub and tack which check out for course and measure with the bearings, we take up the hub and put in its place, an 8x8x36 inch stone, in a bed of concrete and large stone for the true corner".

June 1915 N.D.Gorman, Engineer, Survey Record No.335, Book B, page 489, on file in the CCSO, states "corner to sections 27, 28, 33, 34, T.134, R.31, lies South 11.95 feet."

May 1986 T.Freeman, technician, CCSO, and G. Williams, backhoe operator, Land Corner Record, on file in the CCSO, states dug in intersection of N-S road, road East and trail West. Found 8x8x36" stone with concrete out of place Lying SW of intersection also found piece of concrete near surface of road. Whole intersection torn up, dug about 10' square hole 2-3' deep.

March 1998 D.Landecker, LS 17008, Certificate of Survey, on file in Pequot Lakes Office and the CCSO, indicates a monument found.

Mar. 2001 B.Hippen and C.Loe, technicians, CCSO, notes on file in the CCSO, found a CIM, 1.0' below road surface, on centerline of County Road Number 35 and centerline of Bridgeman Cemetery Road.

Nov. 2010 B.Hippen, CCSO technician, records of the CCSO, set a mag nail on surface of new paved road 1 foot, more or less, East of new centerline of County Road Number 35.

July 2013 B.Hippen, CCSO technician, records of the CCSO, found the monument and added witnesses. The monument, recovered and established references for the position are shown on the face of this document.

Analysis of the recovered record data, field evidence and survey measurements, indicates that the monument recovered by CCSO in 2001 is the accepted location of this corner.

County Coordinates (Cass County South)

Northing 182930.49

Easting 471243.97