

# CERTIFICATE OF LOCATION OF GOVERNMENT CORNER

East Quarter corner of Section 28, Township 134 N., Range 31 W., 5th P.M.

State of Minnesota, County of Cass

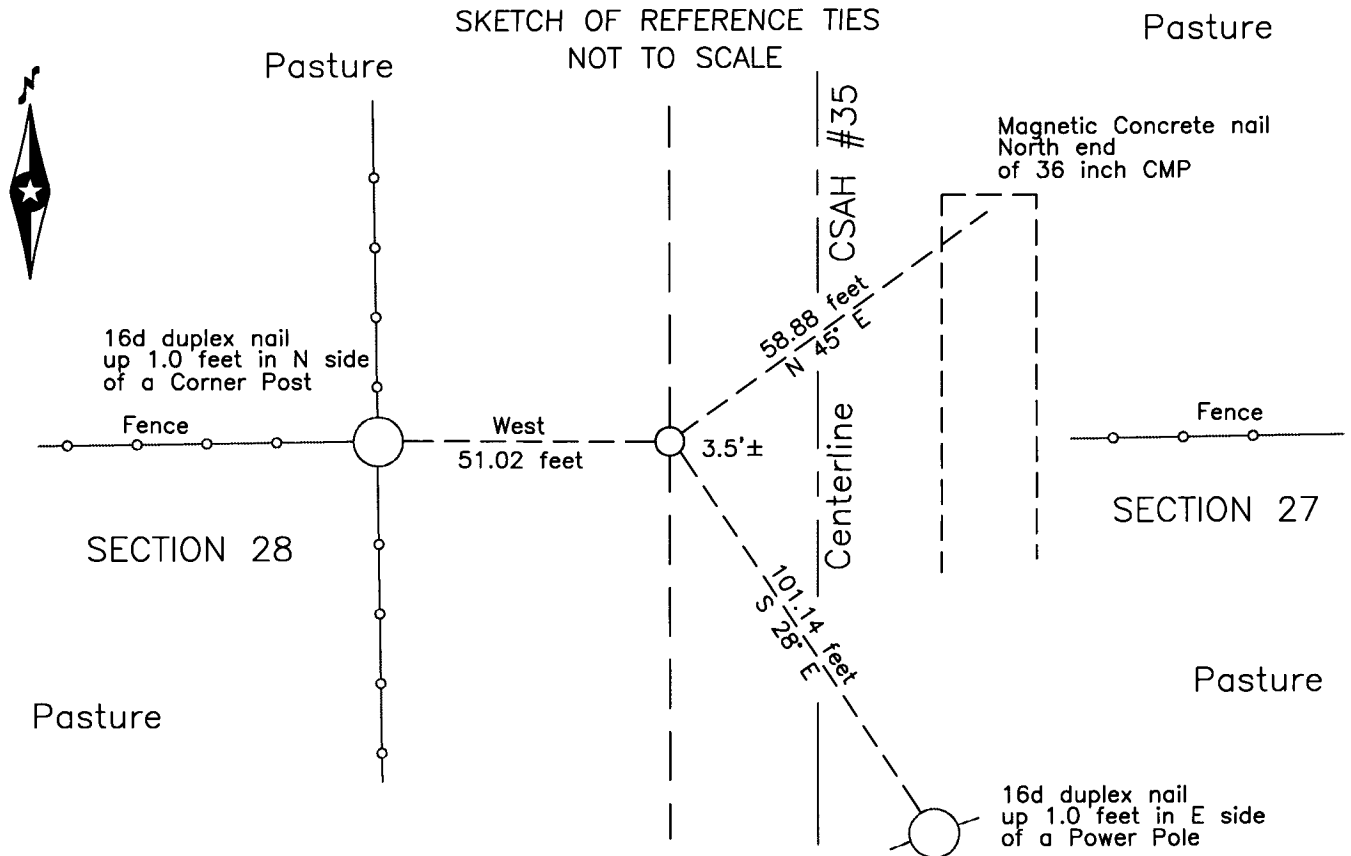
At the corner location shown on the sketch:

On \_\_\_\_\_ found \_\_\_\_\_

left monument as found     lowered monument     removed monument (explain)

On 18 July 2012 placed a 1 inch outside diameter Aluminum tube with 3 inch Aluminum cap, 3.5 feet ± west of centerline of CSAH #35.

SKETCH OF REFERENCE TIES  
NOT TO SCALE



NOTE:  
All bearings are true

Statement of evidence relative to this corner location is on the back of this page.

I hereby certify that this survey, plan or report was prepared by me or under my direct supervision and that I am a duly Licensed Land Surveyor under the laws of the State of Minnesota.

*Terry L. Freeman*

Terry L. Freeman, Cass County Surveyor  
Date 8/14/13 MN License No. 21367



**A000595679**  
**OFFICE OF THE COUNTY RECORDER**  
**CASS COUNTY, MINNESOTA**  
**CERTIFIED, FILED, AND/OR**  
**RECORDED ON**

8/22/2013 9:17:12 AM

AS DOC #: A000595679

PAGES: 2

REC FEES: 0.00

KATHRYN M. NORBY  
CASS COUNTY RECORDER

BY KF Dep

Page 1 of 2 A000595679



**Index No. T.0-13.0**

Statement of Evidence

**East Quarter corner Section 28, Township 134 North, Range 31 West, 5th Principal Meridian.**

June 1869 T.Walker, General Land Office (GLO) Deputy Surveyor set a post for the original corner in his subdivision of this township and referenced it as follows:  
6" Tam N 84° E 14 links (9.2 feet) 4" Tam N 75° W 16 links (10.6 feet)  
Said records are on file at the Minnesota Historical Society, St. Paul, Minnesota, copies are filed with the Cass County Surveyor's Office (CCSO).

Dec. 1910 J.Curo, LS 1428, Cass County Surveyor, Survey Record No. 22, Book A, page 46, on file in the CCSO, states "From the old Govt. bearing trees, we set a stone monument 8x8x36 inches, in size in a bed of cement at the true ¼ corner on the east side of Sec. 28,".

Sept 2003 B.Hippen and T.Anderson, technicians, CCSO, notes on file in the CCSO, found no evidence of corner and located centerline of County Road Number 35 at fence lines East and West.

Aug. 2004 B.Hippen, technician, CCSO, and P. Swentkofske, backhoe operator, notes on file in the CCSO, dug 12 feet East to West, 15 feet North to South, 2 feet deep to natural soil, 6 feet West of centerline of County Road Number 35 on fence lines East and West. Found no evidence of stone monument or cement.

July 2012 B.Hippen, technician, records of the CCSO, set a 1 inch by 30 inch aluminum tube with aluminum cap at the intersection of centerline of County Road Number 35 as located prior to resurfacing and on fence lines East and West, location fits well with the 1910 proportional distances to the North, down 0.05 foot, 3.5 feet, more or less, West of new centerline and witnessed as follows:  
Power Pole S 28° E 101.14 feet 36" CMP N 45° E 58.88 feet  
Corner Post West 51.02 feet

The recovered and established references for the position are shown on the face of this document.

**Analysis of the recovered record data, field evidence and survey measurements, indicates that the monument set by CCSO in 2012 is the accepted location of this corner.**

**County Coordinates (Cass County South)**

**Northing 185573.98**

**Easting 471214.80**