

Page 1 of 2 A000595672

CERTIFICATE OF LOCATION OF GOVERNMENT CORNER

East Quarter of Section 10, Township 134 N., Range 32 W., 5th P.M.
State of Minnesota, County of Cass

At the corner location shown on the sketch:

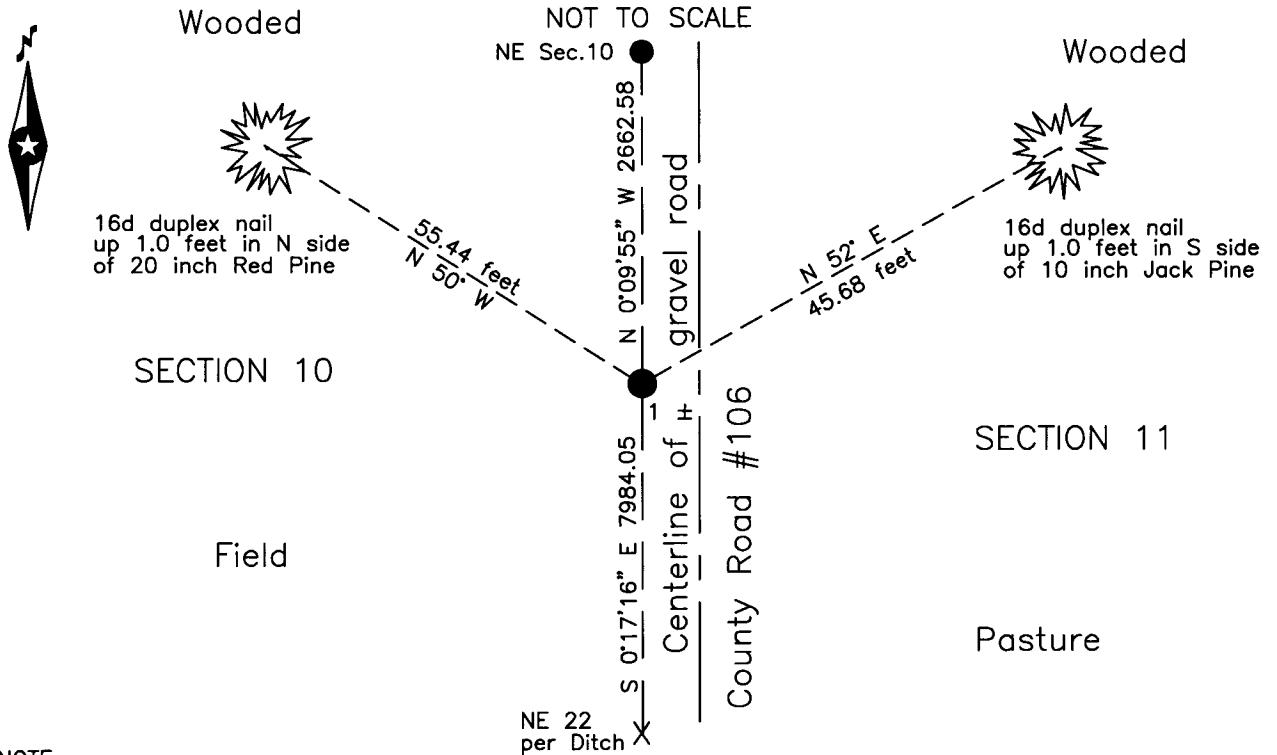
On 1 July 2003 found _____ a 60d spike, down 0.1 foot, 1 foot± west of _____
centerline of County Road Number 106.

left monument as found lowered monument removed monument (explain)

On _____ placed _____

SKETCH OF REFERENCE TIES

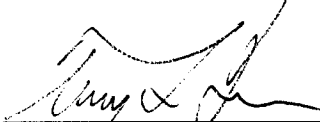
NOT TO SCALE



NOTE:
All bearings are true

Statement of evidence relative to this corner location is on the back of this page.

I hereby certify that this survey, plan or report was prepared by me or under my direct supervision and that I am a duly Licensed Land Surveyor under the laws of the State of Minnesota.


Terry L. Freeman, Cass County Surveyor
Date 8/14/13 MN License No. 21367



A000595672

**OFFICE OF THE COUNTY RECORDER
CASS COUNTY, MINNESOTA
CERTIFIED, FILED, AND/OR
RECORDED ON**

8/22/2013 9:17:05 AM

AS DOC #: A000595672

**PAGES: 2
REC FEES: 0.00**

**KATHRYN M. NORBY
CASS COUNTY RECORDER**

BY KF Dep



Index No. G.0-17.0

Statement of Evidence

East Quarter corner Section 10, Township 134 North, Range 32 West, 5th Principal Meridian.

- Oct. 1870 W.P.Allen, General Land Office (GLO) Deputy Surveyor set a post for the original corner in his subdivision of this township and referenced it as follows:
5" Bl. Pine N 87° W 44 links (29.04 feet) 4" Bl. Pine S 84° E 10 links (6.60 feet)
The above record is on file with the Minnesota Historical Society, St. Paul, Minnesota, copies are on file in the Cass County Surveyor's Office (CCSO).
- July 1915 F.N. Molyneux, Cass County Assistant Engineer, County Ditch #2, Book 40, page 9, on file in the CCSO, states "Unable to locate either bearing tree, but was shown by W.H. Lewis and Daniel Lewis an iron well driven in the ground, for the corner, also irons driven in the ground to mark the position of the B.T.'s. These Irons do not check for distance."
- July 2003 B.Hippen and T.Anderson, CCSO technicians, records of the CCSO, found a 60d spike, down 0.1 foot, 1 foot, more or less, west of the centerline of County Road Number 106 and witnessed the same as follows:
20" Red Pine N 50° W 55.44 feet 10" J. Pine N 52° E 45.68 feet
- July 2013 B.Hippen, CCSO technician, records of the CCSO, found the monument and witnesses from 2003. The monument, recovered and established references for the position are shown on the face of this document.

Analysis of the recovered record data, field evidence and survey measurements, indicates that the monument recovered by the CCSO is the accepted location of this corner.

County Coordinates (Cass County South)

Northing 201580.03

Easting 442187.47