

Page 1 of 2 A000595671

# CERTIFICATE OF LOCATION OF GOVERNMENT CORNER

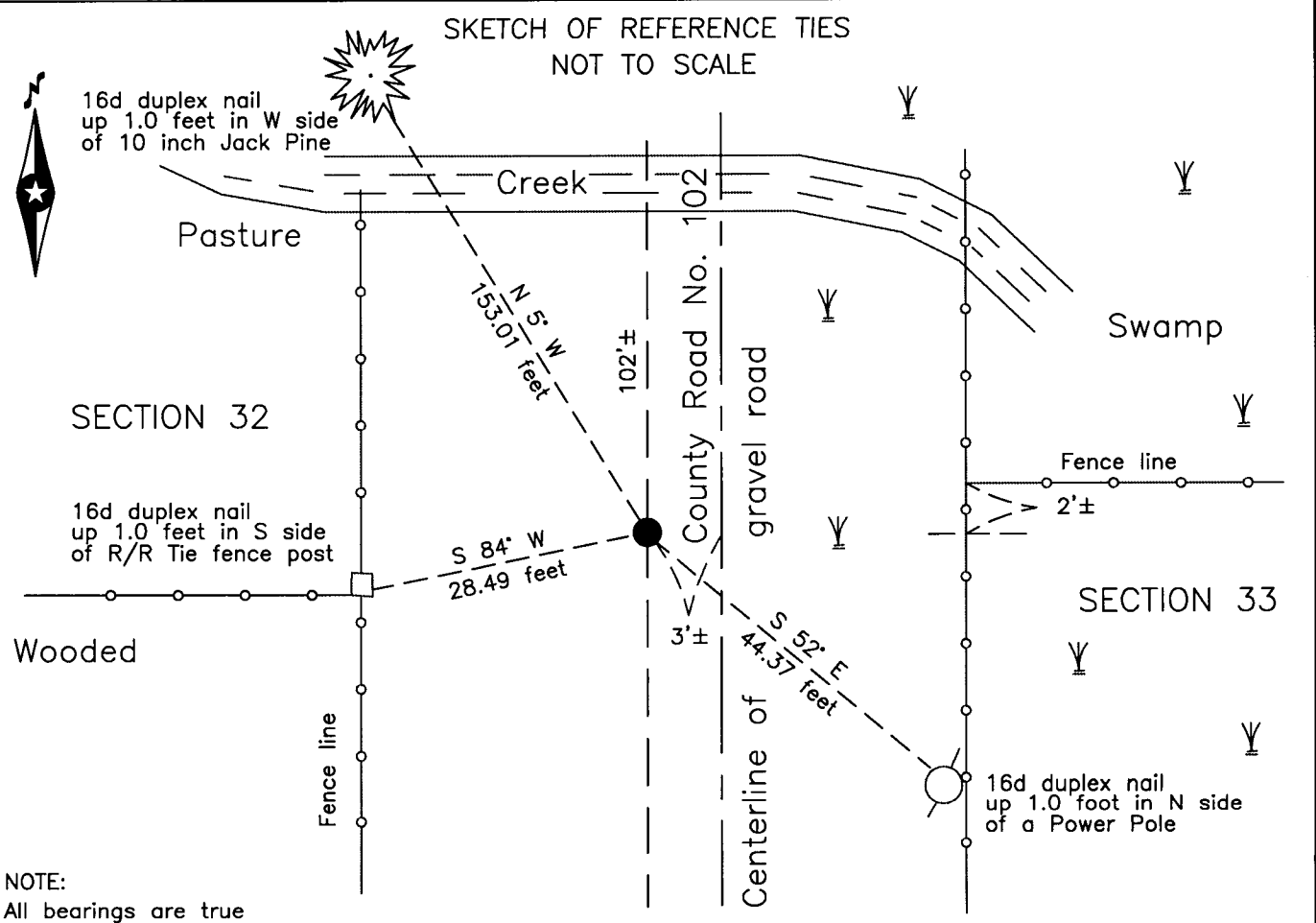
East Quarter of Section 32, Township 134 N., Range 31 W., 5th P.M.  
 State of Minnesota, County of Cass

At the corner location shown on the sketch:

On 24 Aug 2004 found a 2.25 inch ODIP, down 4.0 foot, 3 feet ± West of  
centerline of County Road Number 102.

left monument as found     lowered monument     removed monument (explain)

On 12 Aug 2013 placed a 7/8 inch ODIP, down 0.2 foot, over existing monument



NOTE:  
All bearings are true

Statement of evidence relative to this corner location is on the back of this page.

I hereby certify that this survey, plan or report was prepared by me or under my direct supervision and that I am a duly Licensed Land Surveyor under the laws of the State of Minnesota.

*Terry L. Freeman*  
 Terry L. Freeman, Cass County Surveyor  
 Date 8/14/13 MN License No. 21367

  
**A000595671**  
**OFFICE OF THE COUNTY RECORDER**  
**CASS COUNTY, MINNESOTA**  
**CERTIFIED, FILED, AND/OR**  
**RECORDED ON**  
**8/22/2013 9:17:04 AM**  
**AS DOC #: A000595671**  
**PAGES: 2**  
**REC FEES: 0.00**  
**KATHRYN M. NORBY**  
**CASS COUNTY RECORDER**  
**BY KF Dep**



**Index No. X.0-09.0**

Statement of Evidence

**East Quarter corner of Section 32, Township 134 North, Range 31 West, 5th Principal Meridian.**

- June 1869 T.Walker, General Land Office (GLO) Deputy Surveyor set a post for the original corner in his subdivision of this township and referenced it as follows:  
8" Bl.Pine      S 50° E    22 links (14.5 feet)    6" Bl.Pine      S 23° W    15 links (9.9 feet)  
Said records are on file at the Minnesota Historical Society, St. Paul, Minnesota, copies are filed with the Cass County Surveyor's Office (CCSO).
- June 1915 N.D.Gorman, Engineer, Survey Record No. 335, Book B, page 489, on file in the CCSO, states "We find the N.E. stump standing and plainly marked from which I set ¼ corner."
- Aug. 2004 B.Hippen, technician, CCSO, and P. Swentkofske, backhoe operator, notes on file in the CCSO, found 2.25 ODIP, with plumbers cap, 4.0' below road surface, 3'+,- West of centerline of County Road Number 102.
- Aug. 2013 B.Hippen, CCSO technician, records of the CCSO, set a 7/8 inch outside diameter iron pipe, above the 2004 recovered monument, down 0.2 foot, from the witnesses from 2004.  
The monument, recovered and established references for the position are shown on the face of this document.

**Analysis of the recovered record data, field evidence and survey measurements, indicates that the monument recovered by CCSO in 2004 is the correct perpetuation of this corner.**

**County Coordinates (Cass County South)**

**Northing    180323.35**

**Easting     465879.99**