



A000595670

OFFICE OF THE COUNTY RECORDER
CASS COUNTY, MINNESOTA
CERTIFIED, FILED, AND/OR
RECORDED ON

8/22/2013 9:17:03 AM

AS DOC #: A000595670

PAGES: 2

REC FEES: 0.00

KATHRYN M. NORBY
CASS COUNTY RECORDER

BY KF Dep

Page 1 of 2 A000595670

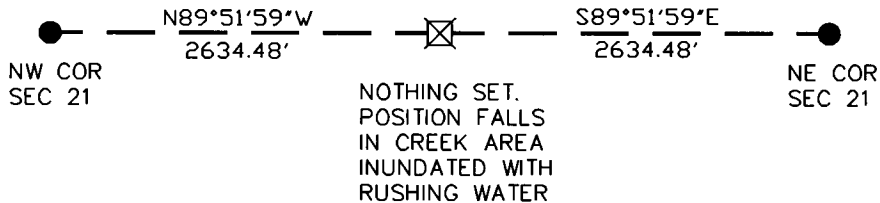
Index No. N - 11

CERTIFICATE OF LOCATION OF GOVERNMENT CORNER

NORTH QUARTER Corner of Section 21, Township 141 N, Range 25 W
5TH Principal Meridian, State of Minnesota, County of CASS

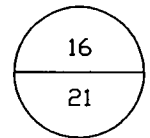
At the corner location shown on the sketch:

- On _____ found a _____
DATE _____
- left monument as found, lowered monument, removed monument (explain)
- On _____ Placed a _____
DATE _____



NORTH ZONE

CASS COUNTY
COORDINATE SYSTEM
NAD 83 96 ADJ.
N = 179144.099
E = 591662.221



BEARINGS ARE CASS COUNTY NORTH
ZONE NAD 1983, 1996 ADJUSTMENT

Statement of evidence for this corner location is on back of this page.

JUNE 2013
FQM01909

I certify that this document was researched and prepared by me or under my direct supervision.

SIGNATURE Joseph & Fleish DATE 6/18/13 License Number 44974

Title: Land Surveyor Professional Engineer County Surveyor County Engineer



N – 11

North Quarter Corner Section 21, Township 141 North, Range 25 West

The Department of Natural Resources, Division of Lands and Minerals, contacted the following offices for information regarding this corner:

- Minnesota Historical Society
- Minnesota Department of Transportation
- Cass County Surveyor's Office

1871 The US General Land Office field notes, on file in the MN Historical Society, show this corner to be marked with a post and the following bearing trees were marked:

15" Tamarack	S46°W	8 links	(5.28')
18" Tamarack	North	15 links	(9.9')

2013 In May the DNR survey crew search for any evidence of the corner location but nothing was found. The computed lost position fell in an area inundated with rushing water and nothing was set. The lost position was accepted as the location for the corner. No ties were taken however Cass County coordinates were assigned.

Southwest Corner Section 16 bears	N 89°51'59" W	2634.48'
Southeast Corner Section 16 bears	S 89°51'59" E	2634.48'

For more information on our survey in this area, please contact MN DNR, Division of Lands and Minerals, Survey Section, 1601 Minnesota Drive, Brainerd, MN 56401