



A000595668

OFFICE OF THE COUNTY RECORDER  
CASS COUNTY, MINNESOTA  
CERTIFIED, FILED, AND/OR  
RECORDED ON

8/22/2013 9:17:01 AM

AS DOC #: A000595668

PAGES: 2

REC FEES: 0.00

KATHRYN M. NORBY  
CASS COUNTY RECORDER

BY KF Dep

Page 1 of 2 A000595668

Index No. J - 13

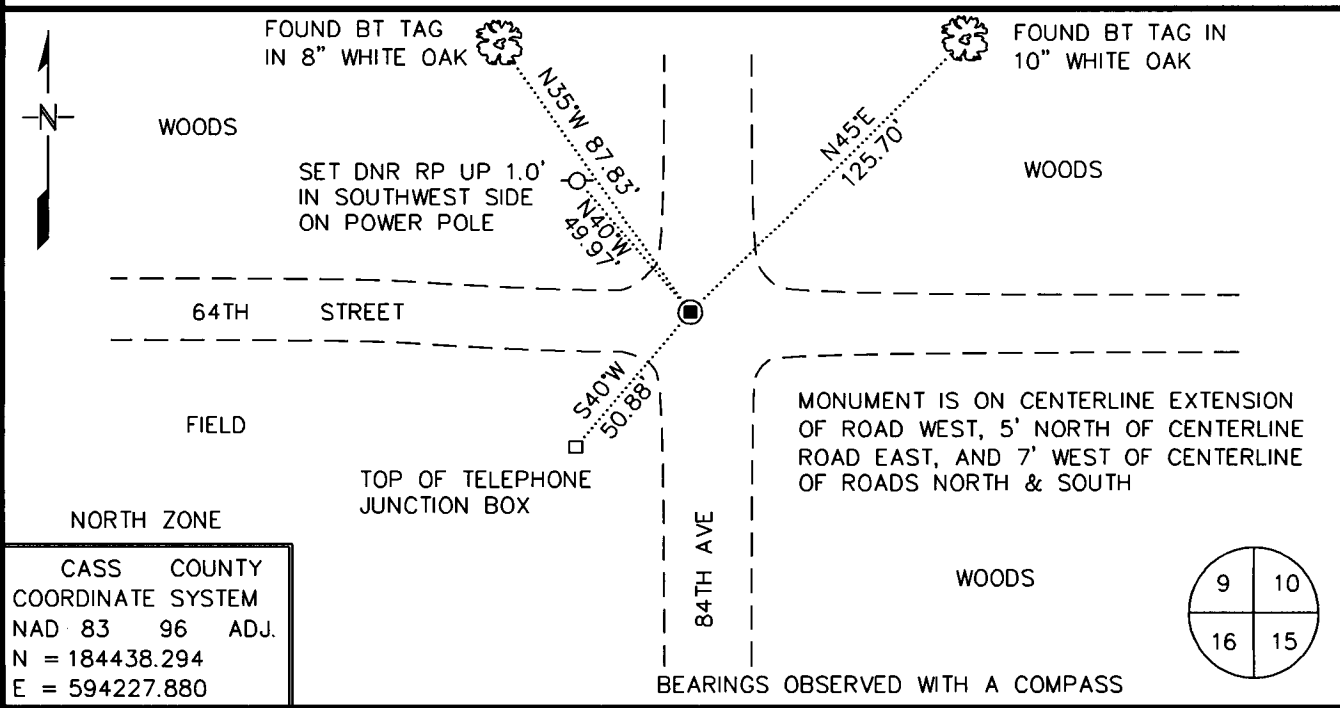
# CERTIFICATE OF LOCATION OF GOVERNMENT CORNER

NORTHEAST Corner of Section 16, Township 141 N, Range 25 W

5TH Principal Meridian, State of Minnesota, County of CASS

At the corner location shown on the sketch:

- On 5/2/13 found a BRASS CAPPED MONUMENT DOWN 1'  
DATE  
IN GRAVEL ROAD
- left monument as found,  lowered monument,  removed monument (explain)
- On \_\_\_\_\_ Placed a \_\_\_\_\_  
DATE



Statement of evidence for this corner location is on back of this page.

JUNE 2013  
FOM01909

I certify that this document was researched and prepared by me or under my direct supervision.

SIGNATURE Joseph A. Fleish DATE 6/18/13 License Number 44974

Title:  Land Surveyor  Professional Engineer  County Surveyor  County Engineer



J - 13

**Northeast Corner Section 16, Township 141 North, Range 25 West**

The Department of Natural Resources, Division of Lands and Minerals, contacted the following offices for information regarding this corner:

Minnesota Historical Society

Minnesota Department of Transportation

Cass County Surveyor's Office

- 1985 This corner was previously Certified as Document No. 285567. A 2 1/2" brass capped iron pipe was set at the intersection of roads.
- 2001 Landecker & Associates, Inc. for a survey in Section 16 indicate an aluminum capped monument found for the corner. A distance of 2560.88 feet was measured to the North Quarter corner of Section 16 and 2661.60 feet to the East Quarter corner of Section 16.
- 2004 Cass County survey crew field notes state a found nail at the centerline – centerline intersection of roads and located the position for a GPS survey.
- 2011 The DNR received coordinates from the Cass County surveyor for this corner.
- 2013 In May the DNR survey crew found a brass capped monument down 1' in the intersection of gravel roads and located the position with GPS RTK. Our coordinates did not match the published County's coordinates by 0.9 feet. The monument was shot again with the same results. The survey crew measured a distance of 2560.86 feet to the North Quarter corner of Section 16. The survey also found 2 - 1985 BT ties that fit the monument. I made the decision to use the DNR coordinates and not the published County coordinates because the information fit very well with the Landecker survey and the found BT's. The position was accepted as the corner and 2 new ties were made.
- North Quarter corner Section 16 bears N 88°56'00"                      2560.86'

For more information on our survey in this area, please contact MN DNR, Division of Lands and Minerals, Survey Section, 1601 Minnesota Drive, Brainerd, MN 56401