

Page 1 of 2 A000595295

CERTIFICATE OF LOCATION OF GOVERNMENT CORNER

Northeast corner of Section 25, Township 134 N., Range 32 W., 5th P.M.

State of Minnesota, County of Cass

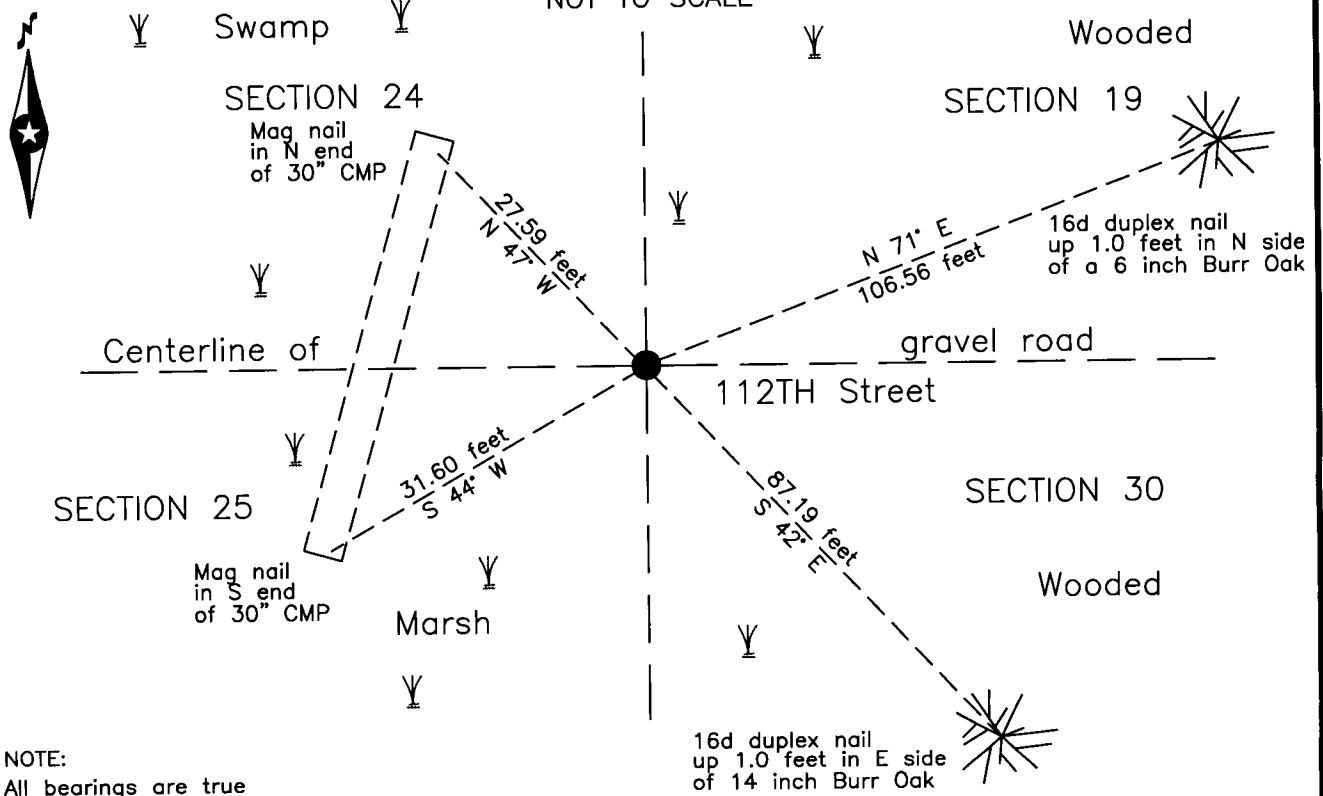
At the corner location shown on the sketch:

On 3 May 2012 found a 7/8 inch ODIP, down 0.2 foot, on centerline of
112th Street, 22 feet± East of culvert.

left monument as found lowered monument removed monument (explain)

On _____ placed _____


SKETCH OF REFERENCE TIES NOT TO SCALE



NOTE:
All bearings are true

Statement of evidence relative to this corner location is on the back of this page.

I hereby certify that this survey, plan or report was prepared by me or under my direct supervision and that I am a duly Licensed Land Surveyor under the laws of the State of Minnesota.


 Terry L. Freeman, Cass County Surveyor
 Date 8/7/13 MN License No. 21367



A000595295
OFFICE OF THE COUNTY RECORDER
CASS COUNTY, MINNESOTA
CERTIFIED, FILED, AND/OR
RECORDED ON

8/9/2013 9:00:44 AM

AS DOC #: A000595295

PAGES: 2

REC FEES: 0.00

KATHRYN M. NORBY
CASS COUNTY RECORDER

BY SR Dep



Index No. R.0-25.0

Statement of Evidence

Northeast corner of Section 25, Township 134 North, Range 32 West, 5th Principal Meridian.

Jan. 1858 E.D. Atwater, General Land Office (GLO) Deputy Surveyor in the survey of the east line of Township 134 North, Range 31 West set a post for the original corner and referenced it as follows:
6" Tam. N 55 1/4° E 16 links (10.56 feet) 7" Tam. S 33° W 19 links (12.54 feet)
The above records are on file at the Minnesota Historical Society, St. Paul, Minnesota, copies are filed with the Cass County Surveyor's Office (CCSO).

June 1917 J.F. Pomasel, LS 1728, Cass County Assistant Engineer, County Ditch No. 11, Book 15, page 1, shelf 5, on file in the CCSO, indicates subject corner at intersection of fences south and west, 17.5 feet from ditch at station 19+46.5.

June 1950 L.M. Carlson, Project Engineer, Minnesota Department of Transportation (MN/DOT), Trunk Highway Number 64, State Project No. 1109-06, on file at MN/DOT District 2 office in Bemidji, MN. indicates Iron Pipe Inp. at the subject corner.

May 2012 B.Hippen, CCSO technician, records of the CCSO, found a 7/8 inch outside diameter iron pipe, down 0.2 foot, on the centerline of 112th Street and witnessed the same as follows:
30" Culvert N 47° W 27.59 feet 6" Burr Oak N 71° E 106.56 feet
30" Culvert S 44° W 31.60 feet 14" Burr Oak S 42° E 87.19 feet

The monument, recovered and established references for the position are shown on the face of this document.

Analysis of the recovered record data, field evidence and survey measurements, indicates that the monument recovered by the CCSO is the accepted location of this corner.

County Coordinates (Cass County South)

Northing 188308.89

Easting 452817.21