

CERTIFICATE OF LOCATION OF GOVERNMENT CORNER

East Quarter of Section 5, Township 133 N., Range 31 W., 5th P.M.
State of Minnesota, County of Cass

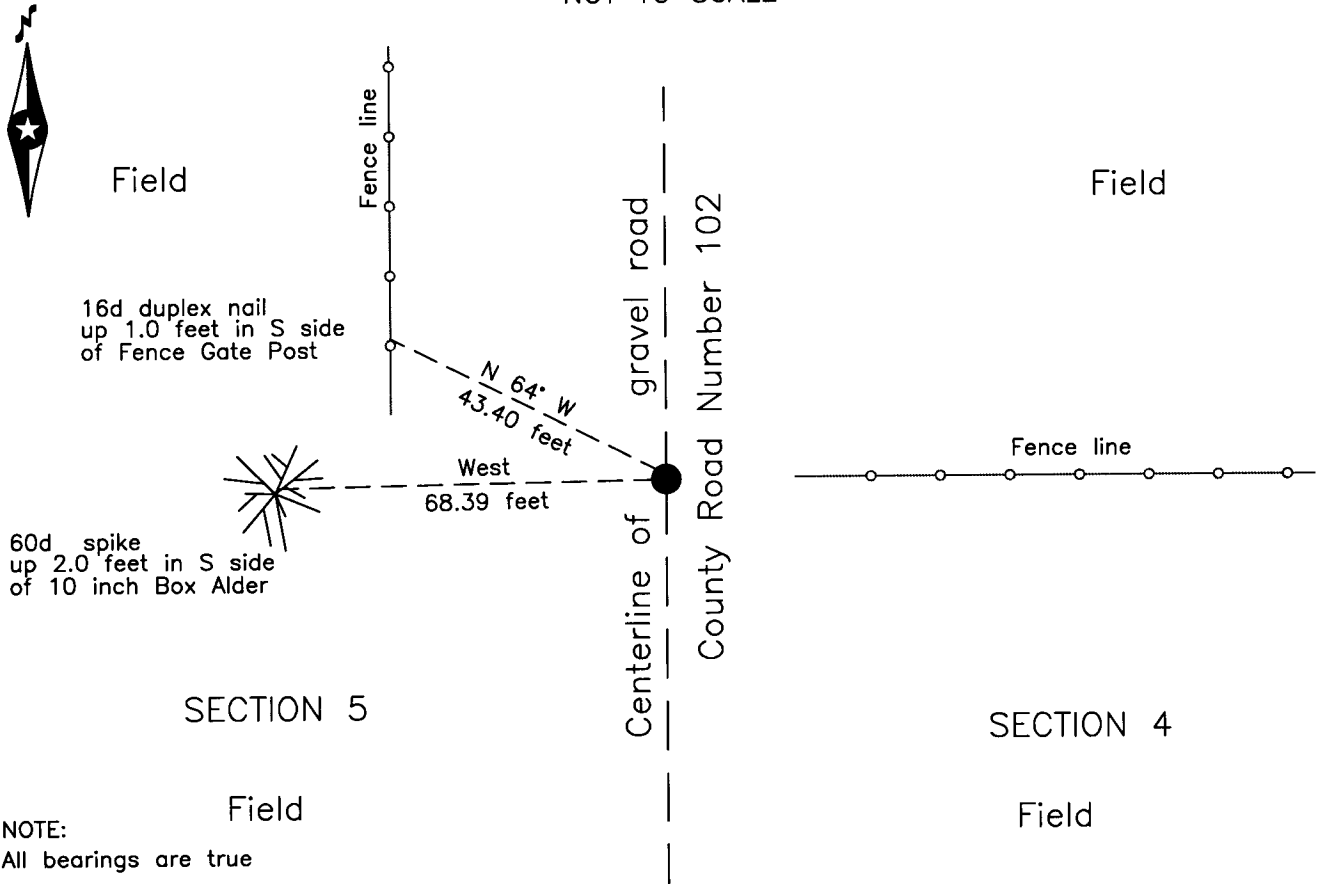
At the corner location shown on the sketch:

On 26 Aug 2003 found a 1 inch ODIP, capped RLS 17253, down 0.2 foot,
on centerline County Road Number 102.

left monument as found lowered monument removed monument (explain)


On _____ placed _____

SKETCH OF REFERENCE TIES NOT TO SCALE



Statement of evidence relative to this corner location is on the back of this page.

I hereby certify that this survey, plan or report was prepared by me or under my direct supervision and that I am a duly Licensed Land Surveyor under the laws of the State of Minnesota.


Terry L. Freeman, Cass County Surveyor
Date 8/7/13 MN License No. 21367



A000595289

**OFFICE OF THE COUNTY RECORDER
CASS COUNTY, MINNESOTA
CERTIFIED, FILED, AND/OR
RECORDED ON**

8/9/2013 9:00:38 AM

AS DOC #: A000595289

PAGES: 2

REC FEES: 0.00

**KATHRYN M. NORBY
CASS COUNTY RECORDER**

BY SR Dep

Page 1 of 2 A000595289



Index No. 13331C.0-09.0

Statement of Evidence

East Quarter corner Section 5, Township 133 North, Range 31 West, 5th Principal Meridian.

- June 1863 T. Walker and W. Smith, General Land Office (GLO) Deputy Surveyors set a post for the original corner and referenced it as follows:
6" Aspen S 49° W 3 links (2.0 feet) 8" Aspen N 71°30' E 9 links (5.9 feet)
Said records are on file with the Secretary of State, St. Paul, Minnesota, copies are filed with the Cass County Surveyor's Office (CCSO).
- June 1997 B. Grivna, LS 17253, Central Minnesota Surveying, set 1" ODIP, capped RLS #17253, at prorate position between the Northeast and Southeast corners of Section 5.
- Aug. 2003 B.Hippen and T. Anderson, technicians, CCSO, records of the CCSO, found a 1 inch iron pipe, capped RLS 17253, 0.2 foot below surface, on centerline of County Road Number 102 and fence line East.
- July 2013 B.Hippen, technician, CCSO, records of the CCSO, found monument and witnesses from 2003. The monument, recovered and established references for the position are shown on the face of this document.

Analysis of the recovered record data, field evidence and survey measurements, indicates that the monument recovered by CCSO in 2003 is the accepted location of this corner.

County Coordinates (Cass County South)

Northing 175170.62

Easting 465924.03