

CERTIFICATE OF LOCATION OF GOVERNMENT CORNER

North Quarter of Section 3, Township 133 N., Range 31 W., 5th P.M.
 State of Minnesota, County of Cass

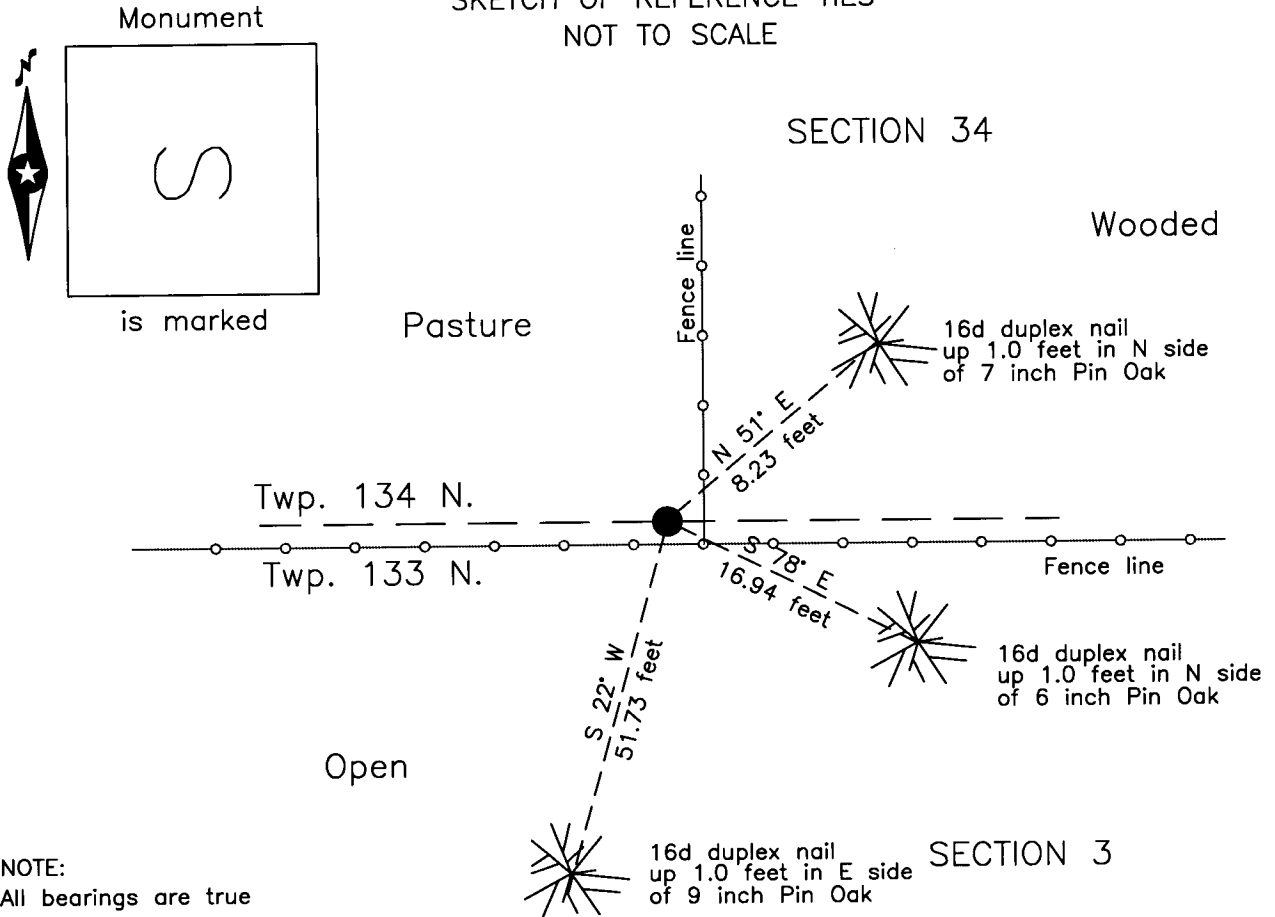
At the corner location shown on the sketch:

On 17 Sept 2003 found a 8 inch square stone monument, up 0.2 foot,
at fence corner.

left monument as found lowered monument removed monument (explain)

On _____ placed _____

SKETCH OF REFERENCE TIES
 NOT TO SCALE



NOTE:
 All bearings are true

Statement of evidence relative to this corner location is on the back of this page.

I hereby certify that this survey, plan or report was prepared by me or under my direct supervision and that I am a duly Licensed Land Surveyor under the laws of the State of Minnesota.

Terry L. Freeman
 Terry L. Freeman, Cass County Surveyor
 Date 8/7/13 MN License No. 21367



A000595287

**OFFICE OF THE COUNTY RECORDER
 CASS COUNTY, MINNESOTA
 CERTIFIED, FILED, AND/OR
 RECORDED ON**

8/9/2013 9:00:36 AM

AS DOC #: A000595287

PAGES: 2

REC FEES: 0.00

**KATHRYN M. NORBY
 CASS COUNTY RECORDER**

BY SR Dep

Page 1 of 2 A000595287



Index No. 13331A.0-15.0

Statement of Evidence

North Quarter corner Section 3, Township 133 North, Range 31 West, 5th Principal Meridian.

April 1858 E.Darling, General Land Office (GLO) Deputy Surveyor set a post for the original corner and referenced it as follows:
8" Pine N 29° W 25 links (16.5 feet) 8" Pine S 5° W 24 links (15.8 feet)
Said records are on file with the Secretary of State, St. Paul, Minnesota, copies are filed with the Cass County Surveyor's Office (CCSO).

Nov. 1907 J.Curo, LS 1428, Cass County Surveyor, Survey Record No.2, Book A, page 5 on file in the CCSO, states "We find both bearing trees plainly marked from which we set the true ¼ cor' by flat measurement from the face of the trees after which they stand perfect for course and measurement. I set post for true ¼ corner and establish new bearing trees as follows":
4" Norway Pine S 31°30' E 32 feet 4" Jack Pine N 44° E 26.50 feet
Jack Pine N 63° E 16.30 feet

May 1910 Curo Book 91, page 36, on file in the CCSO states "We set the Stone ¼ on N side of 3-133-31".

Sept. 2003 B.Hippen and T.Anderson, technicians, CCSO, notes on file in the CCSO, found an 8 x 8 inch stone monument, up 0.2 foot, NW of fence corner post.

July 2013 B.Hippen, technician, CCSO, records of the CCSO, found monument and witnesses from 2003. The monument, recovered and established references for the position are shown on the face of this document.

Analysis of the recovered record data, field evidence and survey measurements, indicates that the monument recovered by CCSO is the correct perpetuation of this corner.

County Coordinates (Cass County South)

Northing 177627.94

Easting 473813.81