

CERTIFICATE OF LOCATION OF GOVERNMENT CORNER

E1/4 Corner of Section 18, Township 140N, Range 29W, 5th p.m., State of Minnesota, County of Cass

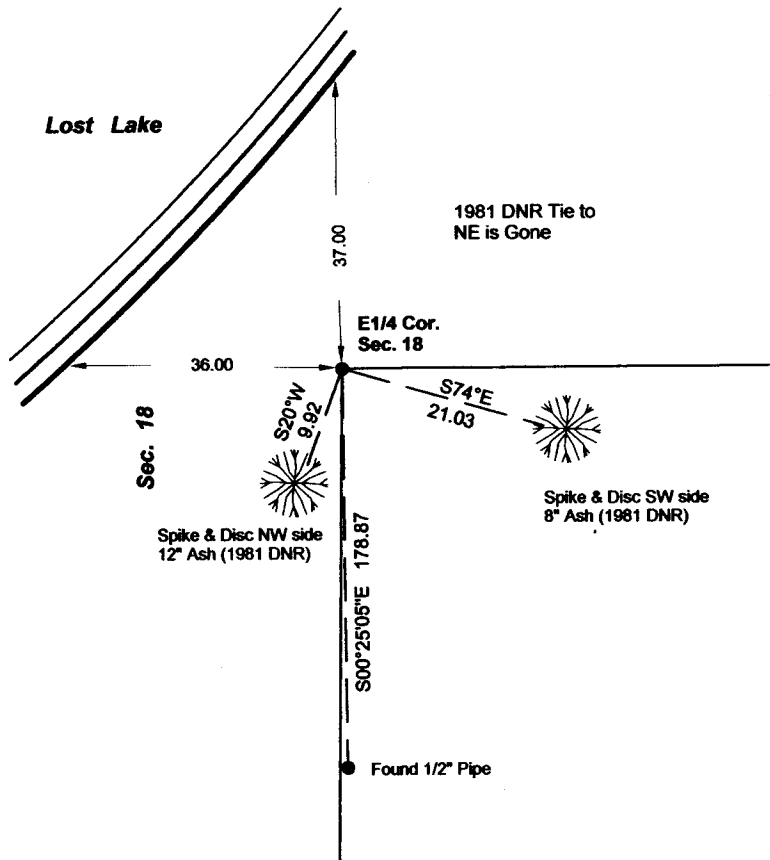
At the corner location shown on the sketch:

On 02/14/2013 found a 1 1/2" PIPE, UP 1'
Date

left monument as found lowered monument removed monument (explain)

On _____ placed a _____
Date

SKETCH OF REFERENCE TIES



Tie Distances are measured to the spikes.

Cass County Coordinate System (North Zone)
N= 150894.1630 E= 458110.3282

o Set Re-Rod with RLS cap No. 17774

● Found Pipe



NOT TO SCALE

Statement of evidence relative to this corner location is on back of page.

I hereby certify that this document and the data contained herein was prepared by me or under my direct supervision.

Marvin R. Kohout 22 July 2013
Marvin R. Kohout Date

Registration No. 17774

Land surveyor

OFFICE OF COUNTY RECORDER



A000594834

OFFICE OF THE COUNTY RECORDER
CASS COUNTY, MINNESOTA
CERTIFIED, FILED, AND/OR
RECORDED ON

7/25/2013 3:07:49 PM

AS DOC #: A000594834

PAGES: 2

REC FEES: 0.00

KATHRYN M. NORBY
CASS COUNTY RECORDER

BY SR Dep



STATEMENT OF EVIDENCE

EAST QUARTER CORNER OF SECTION 18, TOWNSHIP 140N, RANGE 29W, 5TH P.M.

- JAN 1870 ORVILLE SMITH, DEPUTY GOVERNMENT SURVEYOR, SET A POST TO MARK THE CORNER LOCATION. REFERENCES:
6" TAMARACK N80E 9 LINKS 4" TAMARACK S55W 8 LINKS
- SEPT. 1919 ELMER B. HORST, LS NO. 376, SET CORNER USING BLAZED LINES AND B.T.'S CURO BOOK NO. 158 PAGE 73. ALSO COUNTY SURVEY RECORD BOOK "C" PAGE 210.
- MAY 1920 ELMER B. HORST, LS NO. 376, SET A 2" X 48" IM, CURO BOOK NO. 165 PAGE 5
- JUNE 1920 SKETCH IN CURO BOOK NO. 165 PAGE 14 SHOWS PARTIAL SUBDIVISION OF SECTION 17.
- DEC. 1941 WILLIAM J. SPAIN, JR., LS NO. 2003 STARTED A SURVEY FROM THIS CORNER SPAIN 1938 PAGE 070
- JULY 1961 W. J. SPAIN, JR. FOUND AN IRON HUB SPAIN 1959 PAGE 090
- 1965 R. F. SCHEIDER, LS NO. 5740, FOUND 2" IM, CCSO LAND CORNER RECORD.
12" ASH S20W 9.92 FEET 8" ASH S74E 21.03 FEET 10" ASH N20E 22.96 FEET
- MAR. 1977 WALTER CURO, LS NO. 11395, FOUND A 2" PIPE "ABOUT A 100 FEET SOUTH OF LOST LAKE, CURO BOOK NO. 165 PAGES 51-52.
- AUG. 1981 MNDNR FOUND 1 1/2" PIPE, 1965 TIES CCSO LAND CORNER RECORD.
- NOV. 1990 JOHN D. WALKER, LS NO. 16098 DNR SURVEYOR, FOUND A 1 1/2" IRON PIPE PROJECTING 12", CERTIFICATE OF LOCATION OF GOVERNMENT CORNER DOCUMENT NO. 324961.
- MAR. 2005 TERRY L. FREEMAN, LS NO. 21367, CERTIFICATE OF SURVEY SHOWS A FOUND MONUMENT, CCSO DOCUMENT NO. 2984.
- FEB. 2013 MARVIN R. KOHOUT, LS NO. 17774, KOHOUT LAND SURVEYING FOUND A 1 1/2" PIPE UP 12". THE FOUND PIPE IS ACCEPTED AS MARKING THE LOCATION OF THE E1/4 CORNER OF SECTION 18