

CERTIFICATE OF LOCATION OF GOVERNMENT CORNER

NE Corner of Section 30, Township 140N, Range 29W, 5th p.m., State of Minnesota, County of Cass

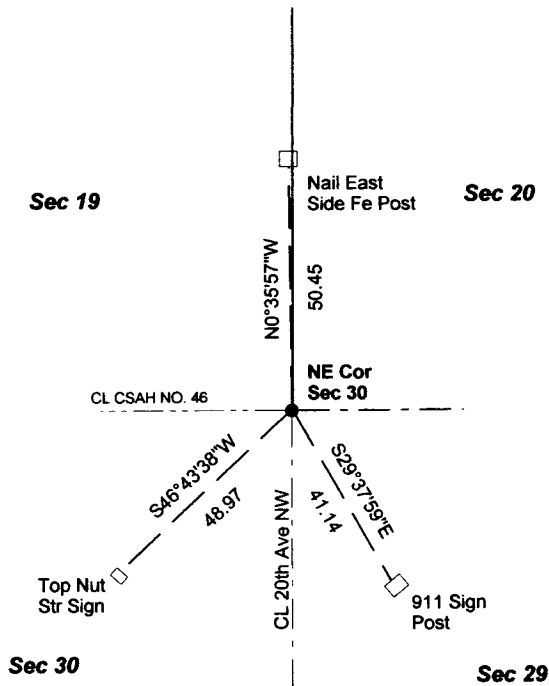
At the corner location shown on the sketch:

On 02/14/2013 found a BRIDGE SPIKE, 0.7 SOUTH OF CENTER LINE CSAH NO. 46
Date

left monument as found lowered monument removed monument (explain)

On _____ placed a _____
Date

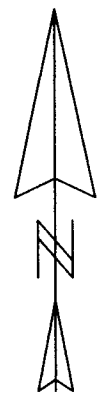
SKETCH OF REFERENCE TIES



Tie Distances are measured to the spikes.

Cass County Coordinate System (North Zone)
N=143041.0219 E=458134.9143

● Found bridge spike in bituminous



NOT TO SCALE

Statement of evidence relative to this corner location is on back of page.

I hereby certify that this document and the data contained herein was prepared by me or under my direct supervision.

Marvin R. Kohout 22 July 2013
Marvin R. Kohout Date

Registration No. 17774

Land surveyor

OFFICE OF COUNTY RECORDER



A000594831

**OFFICE OF THE COUNTY RECORDER
CASS COUNTY, MINNESOTA
CERTIFIED, FILED, AND/OR
RECORDED ON**

7/25/2013 3:07:46 PM

AS DOC #: A000594831

PAGES: 2

REC FEES: 0.00

**KATHRYN M. NORBY
CASS COUNTY RECORDER**

BY SR Dep

Page 1 of 2 A000594831



INDEX NO. R.0 - 5.0

STATEMENT OF EVIDENCE

NORTHEAST CORNER OF SECTION 30, TOWNSHIP 140N, RANGE 29W, 5TH P.M.

- JAN 1870 ORIVILLE SMITH, DEPUTY GOVERNMENT SURVEYOR, SET A POST TO MARK THE CORNER LOCATION. REFERENCES:
16" W. PINE N82W 312 LINKS 7" DRY PINE S75W 330 LINKS (217.8 FEET)
- JULY 1907 JOHN W. CURO, LS NO. 1428, FOUND POST CURO BOOK NO. 99 PAGE 23. ALSO IN COUNTY SURVEY RECORD BOOK "B" PAGES 433-441.
- JULY 1920 LINCOLN MACKEY, DEPUTY COUNTY SURVEYOR, FOUND A WHITE PINE STUMP S75W 217.8 FEET FROM SETTLER'S EVIDENCE AS TO CORNER LOCATION. SETS "A 2" X 48" IM 40" IN THE GROUND REFERENCES:
6" R. PINE N43W 298.80 FEET 7" TAMARACK N14E 208.50 FEET
14" R. PINE S04-30W 302.80 FEET CURO BOOK NO. 170B PAGE 23.
- JULY 1920 ELMER B. HORST, LS NO. 376, DRAWS SKETCH OF SECTIONS 20 WITH EMPHASIS ON THE SOUTH LINE OF SECTIONS 20 & 21. HE NOTES THAT MACKEY'S CORNER IS INCORRECT, CURO BOOK NO. 170B PAGE 52.
- OCT. 1951 WILLIAM J. SPAIN, LS NO. 2003, FOUND A 3" IRON MONUMENT, SPAIN 1949 PAGE 83.
- NOV. 1959 HAROLD J. CURO, LS NO. 3417, ATTEMPTS TO COMPUTE NEW LOCATION FOR THE CORNER, UNCLEAR SOLUTION, CURO BOOK NO. 247 PAGE 143.
- 1966 C. D. COULTER, LS NO. 5852, FOUND A 1 1/2" PIPE 12.6' NORTH OF CL COUNTY ROAD IN NORTH ROAD DITCH REFERENCES:
SPIKE IN PP NW 45.00' SPIKE IN GP NE 23.00' SPIKE IN TP SE 40.60'
- DEC. 1983 WALTER E. CURO, LS NO. 11395, SHOWS CORNER IN A SKETCH IN CURO BOOK NO. 310 PAGE 22.
- FEB. 2013 MARVIN R. KOHOUT, LS NO. 17774, FOUND A BRIDGE SPIKE 0.7' SOUTH OF CL OF CSAH NO. 46 IN T-INTERSECTION. THE BRIDGE SPIKE IS ACCEPTED AS MARKING THE LOCATION OF THE NORTHEAST CORNER OF SECTION 30.

File in 55 [Signature]

4/22/13