

CERTIFICATE OF LOCATION OF GOVERNMENT CORNER

N1/4 Corner of Section 29, Township 140N, Range 29W, 5th p.m., State of Minnesota, County of Cass

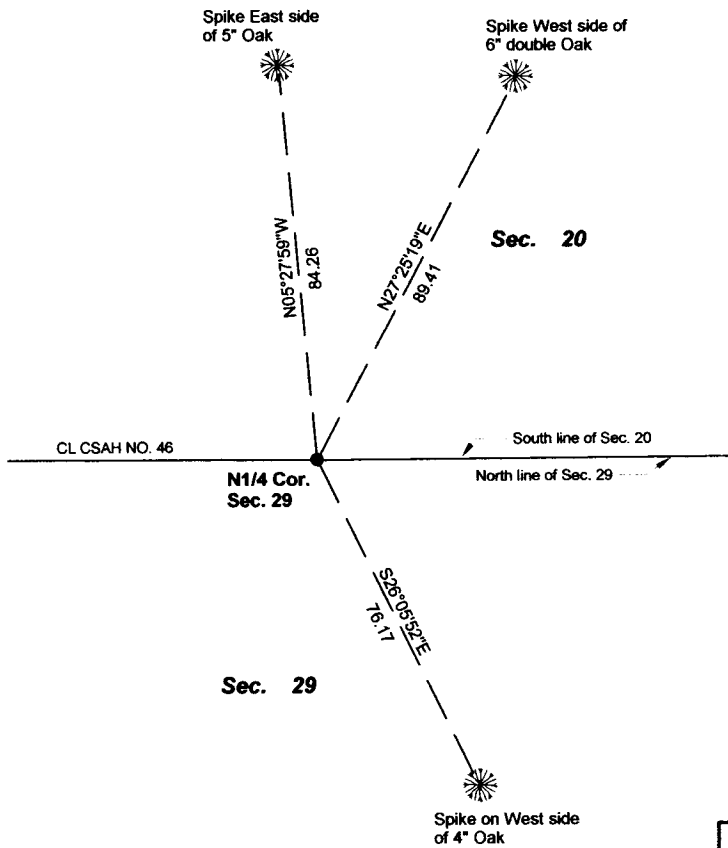
At the corner location shown on the sketch:

On 02/14/2013 found a BRIDGE SPIKE ON SURFACE COUNTY ROAD NO. 46
Date

left monument as found lowered monument removed monument (explain)

On _____ placed a _____
Date

SKETCH OF REFERENCE TIES



Tie Distances are measured to the spikes.

Cass County Coordinate System (North Zone)
N= 142989.1515 E= 460754.7286

● Found bridge spike in bituminous



NOT TO SCALE

Statement of evidence relative to this corner location is on back of page.

I hereby certify that this document and the data contained herein was prepared by me or under my direct supervision.

Marvin R Kohout 22 July 2013
Marvin R. Kohout Date

License No. 17774

Land surveyor

OFFICE OF COUNTY RECORDER



A000594830

OFFICE OF THE COUNTY RECORDER
CASS COUNTY, MINNESOTA
CERTIFIED, FILED, AND/OR
RECORDED ON

7/25/2013 3:07:45 PM

AS DOC #: A000594830

PAGES: 2

REC FEES: 0.00

KATHRYN M. NORBY
CASS COUNTY RECORDER

BY SR Dep

Page 1 of 2 A000594830



INDEX NO. R.0 - 7.0

STATEMENT OF EVIDENCE

NORTH QUARTER CORNER OF SECTION 29, TOWNSHIP 140N, RANGE 29W, 5TH P.M.

- JAN 1870 ORIVILLE SMITH, DEPUTY GOVERNMENT SURVEYOR, SET A POST TO MARK THE CORNER LOCATION. REFERENCES:
5" FIR S09E 25 LINKS 4" W. BIRCH N22E 20 LINKS

- JULY 1907 JOHN W. CURO, LS NO. 1428, SET A STAKE 2640 FEET EAST OF THE NORTHEAST CORNER OF SECTION 30, TWP. 140N, RGE 29W, CURO BOOK NO. 99 PAGE 22.

- JULY 1920 LINCOLN MACKEY, DEPUTY COUNTY SURVEYOR, SET 2" X 48" IM REFERENCES: 6" NOR. PINE N43W 298.80 7" TAMARACK N14E 207.50
14" NOR. PINE S43W 302.80
CURO BOOK NO. 170B PAGE 33.

- NO DATE HAROLD CURO, LS NO. 3417, GAVE THESE REFERENCES:
8" W. OAK NORTH 70.35 FEET 36" W. PINE N60W 134.20 FEET
2" W. PINE S50W 70.36 FEET POWER POLE N45E 33.20 FEET
CURO BOOK NO. 297 PAGE 70

- OCT. 1951 WILLIAM J. SPAIN, LS NO. 2003, FOUND AN IRON MONUMENT, SPAIN 1949 PAGE 83.

- AUG 1952 WILLIAM J. SPAIN, LS NO. 2003, FOUND AN IRON MONUMENT SPAIN 1949
NOV. PAGE 116.

- JAN. 2002 TERRY L. FREEMAN, LS NO. 21367, CERTIFICATE OF SURVEY DOCUMENT NO. 1441.

- JULY 2002 TERRY L. FREEMAN, LS NO. 21367, ON HIS CERTIFICATE OF SURVEY SHOWS FOUND MONUMENT, CCSO DOCUMENT NO. 1616 & 1627.

- JULY 2003 TERRY L. FREEMAN, LS NO. 21367, ON HIS CERTIFICATE OF SURVEY SHOWS A FOUND MONUMENT, CCSO DOCUMENT NO. 1982.

- FEB. 2013 MARVIN R. KOHOUT, LS NO. 17774, KOHOUT LAND SURVEYING FOUND A BRIDGE SPIKE ON THE SURFACE OF CSAH NO. 46. THE BRIDGE SPIKE IS ACCEPTED AS MARKING THE LOCATION OF THE N1/4 CORNER SECTION 29.

8107 1/2 1/2 1/2 1/2 1/2

17774