

CERTIFICATE OF LOCATION OF GOVERNMENT CORNER

E1/4 Corner of Section 20, Township 140N, Range 29W, 5th p.m., State of Minnesota, County of Cass

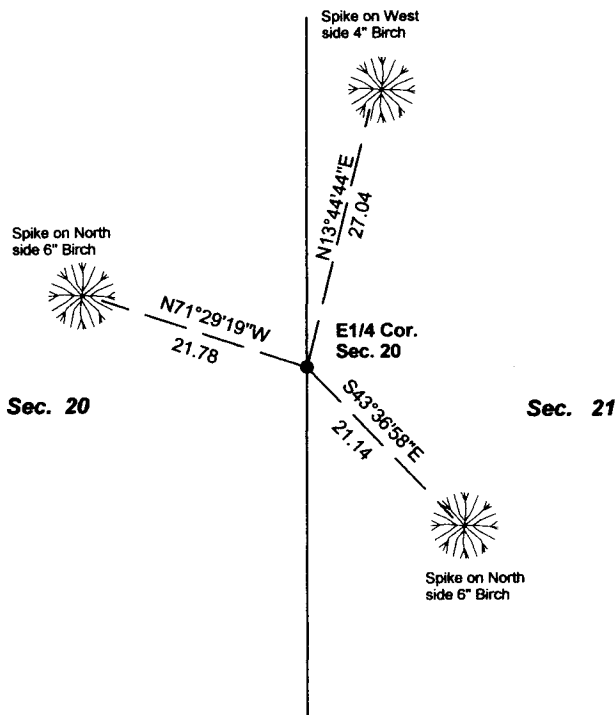
At the corner location shown on the sketch:

On 02/14/2013 found a 2" SQUARE TUBE WITH CAP
Date

left monument as found lowered monument removed monument (explain)

On _____ placed a _____
Date

SKETCH OF REFERENCE TIES



Tie Distances are measured to the spikes.

Cass County Coordinate System (North Zone)
N= 145604.0039 E= 463365.9169

● Found Pipe



NOT TO SCALE

Statement of evidence relative to this corner location is on back of page.

I hereby certify that this document and the data contained herein was prepared by me or under my direct supervision.

Marvin R. Kohout 22 July 2013
Marvin R. Kohout Date

Registration No. 17774

Land surveyor

OFFICE OF COUNTY RECORDER



A000594829

**OFFICE OF THE COUNTY RECORDER
CASS COUNTY, MINNESOTA
CERTIFIED, FILED, AND/OR
RECORDED ON**

7/25/2013 3:07:44 PM

AS DOC #: A000594829

PAGES: 2

REC FEES: 0.00

**KATHRYN M. NORBY
CASS COUNTY RECORDER**

BY SR Dep

Page 1 of 2 A000594829



STATEMENT OF EVIDENCE

EAST CORNER OF SECTION 20, TOWNSHIP 140N, RANGE 29W, 5TH P.M.

- JAN 1870 ORIVILLE SMITH, DEPUTY GOVERNMENT SURVEYOR, SET A POST TO MARK THE CORNER LOCATION. REFERENCES:
12" W. PINE N44W 90 LINKS

- FEB. 1988 DAVID S. LANDECKER, LS NO. 17008, LANDECKER & ASSOCIATES, INC. FOUND A IRON MONUMENT AS INDICATED ON THE CERTIFICATE OF SURVEY, CCSO DOCUMENT NO. 1374, COUNTY RECORDER NO. 4314.

- FEB. 2013 MARVIN R. KOHOUT, LS NO. 17774, KOHOUT LAND SURVEYING FOUND A 2" SQUARE TUBE WITH CAP. THE FOUND MONUMENT IS ACCEPTED AS MARKING THE LOCATION OF THE E1/4 CORNER OF SECTION 20.

21050101.53 10/21/13 M. R. Kohout