

CERTIFICATE OF LOCATION OF GOVERNMENT CORNER

N1/4 Corner of Section 17, Township 140N Range 29W, 5th p.m., State of Minnesota, County of Cass

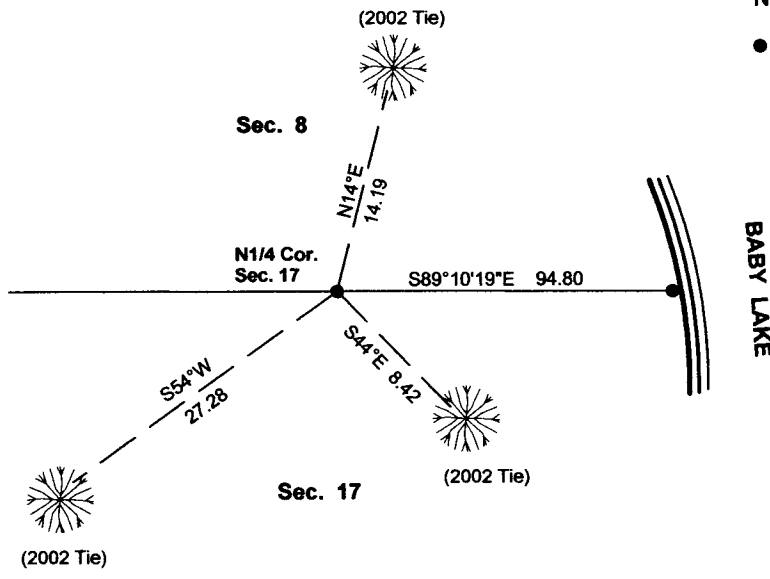
At the corner location shown on the sketch:

On 02/14/2013 found a 2" PIPE UP 0.6
Date

left monument as found lowered monument removed monument (explain)

On _____ placed a _____
Date

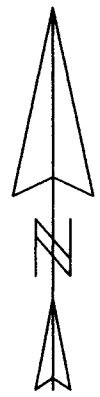
SKETCH OF REFERENCE TIES



Tie Distances are measured to the spikes.

Cass County Coordinate System (North Zone)
N= 153525.590779 E= 460749.409690

● Found Pipe



BABY LAKE

NOT TO SCALE

Statement of evidence relative to this corner location is on back of page.

I hereby certify that this document and the data contained herein was prepared by me or under my direct supervision.

Marvin R Kohout 22 July 2013
Marvin R. Kohout Date

Registration No. 17774

Land surveyor

OFFICE OF COUNTY RECORDER



A000594825

OFFICE OF THE COUNTY RECORDER
CASS COUNTY, MINNESOTA
CERTIFIED, FILED, AND/OR
RECORDED ON

7/25/2013 3:07:40 PM

AS DOC #: A000594825

PAGES: 2

REC FEES: 0.00

KATHRYN M. NORBY
CASS COUNTY RECORDER

BY SR Dep

Page 1 of 2 A000594825



STATEMENT OF EVIDENCE

NORTH QUARTER CORNER OF SECTION 17, TOWNSHIP 140N, RANGE 29W, 5TH P.M.

- JAN 1870 ORIVILLE SMITH, DEPUTY GOVERNMENT SURVEYOR, SET A POST TO MARK THE CORNER LOCATION. REFERENCES:
8" W. PINE S40E 31 LINKS
5" FIR N20W 5 LINKS
- 1918 JOHN E. CARDELLE, LS NO. 566, EGAN FIELD NOVAK SET A POST FROM THE GLOBE T'S.
- 1918 PLAT OF INTERLACHEN LODGE, C.F. LANDOFF.
- MAY 1920 LINCOLN MACKEY, DEPUTY COUNTY SURVEYOR AND CREW FOUND POST AND GOVERNMENT REFERENCE STUMPS. SET A 2" X 48" IM CURO BOOK NO. 165, PAGE 4, NEW REFERENCES:
9" ASH N06-30E 23.40 FEET
7" ELM S69-30E 33.40 FEET
- JUNE 1920 SKETCH IN CURO BOOK NO. 165, PAGE 14, SHOWS PARTIAL SUBDIVISION OF SECTION 17.
- AUG. 1920 PLAT FIRST ADDITION TO INTERLACHEN LODGE, INC. FILED IN BOOK D OF PLATS NO. 36 ELMER HORST, LS NO. 376, SHOWS IM.
- NO DATE SKETCH IN CURO BOOK NO. 165, PAGE 80, SHOWS CORNER
- NO DATE SKETCH IN CURO BOOK NO. 288 PAGE 97 SHOWS FOUND MONUMENT
- 1974 R.F. SCHNEIDER, LS NO. 5740, FOUND A 2" PIPE IN PLACE, CCSO LAND CORNER RECORD.
- MAY 1976 WILLIAM J. SPAIN, LS NO. 2003, SIGHTED THE MONUMENT, SPAIN 1960 PAGE 47.
- JULY 1984 EDWARD CURO AND KEN METCALF, CREW OF WALTER E. CURO, LS NO. 11395, FOUND A 2" PIPE, CURO BOOK NO. 310, PAGE 75.
- DEC. 2002 TERRY L. FREEMAN, LS NO. 21367, LANDECKER & ASSOCIATES, INC. CERTIFICATE OF SURVEY SHOWS MONUMENT FOUND, CCSO DOCUMENT NO. 1834.
- AUG 2004 SAMUEL DELEO, LS NO. 40341, HORIZONTAL FIELD SHEET SHOWS 2" IRON MONUMENT FOUND, CCSO DOCUMENT NO. 2411
- FEB. 2013 MARVIN R KOHOUT, LS NO. 17774, KOHOUT LAND SURVEYING FOUND A 2" PIPE AND BEARING TREE TAGS. THE FOUND PIPE IS ACCEPTED AS MARKING THE N1/4 CORNER OF SECTION 17.