

# CERTIFICATE OF LOCATION OF GOVERNMENT CORNER

North Quarter Corner of Section 9, Township 139 N., Range 26 W., 5th P.M.

STATE OF MINNESOTA, County of CASS

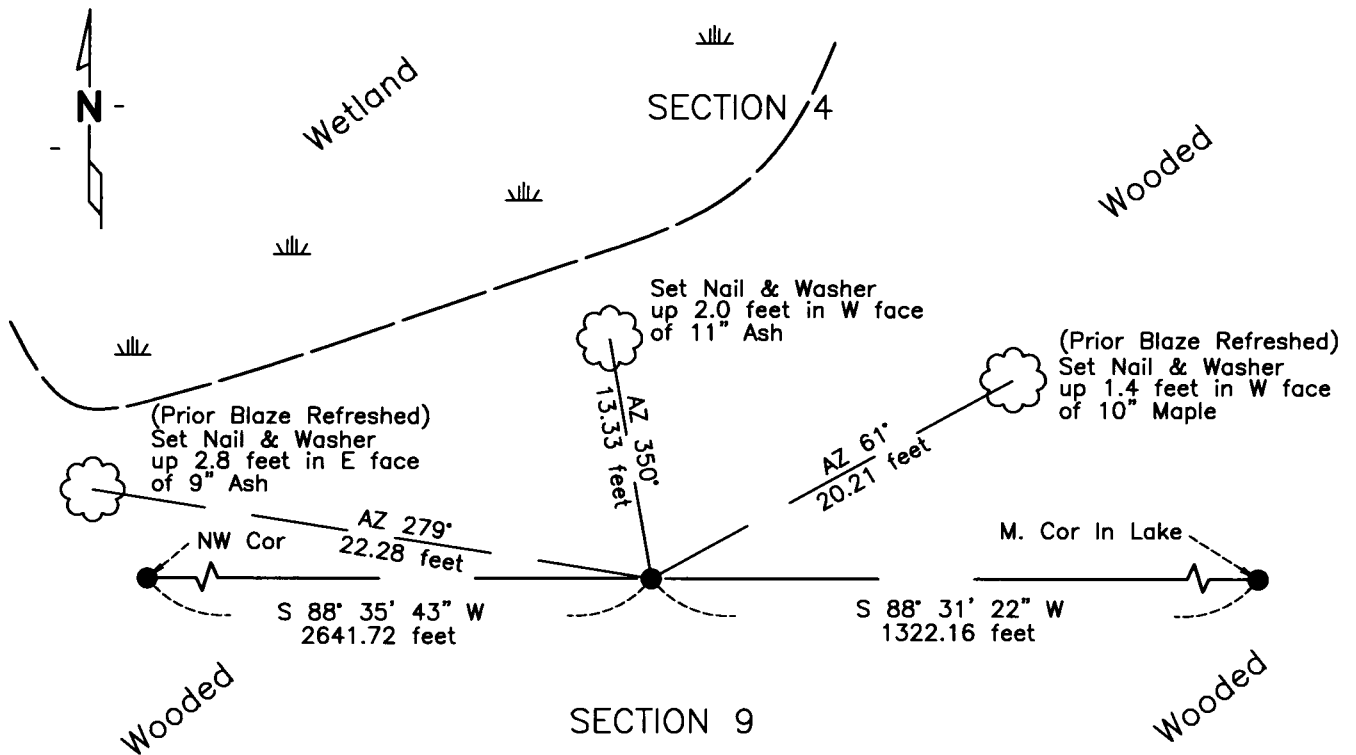
At the corner location shown on the sketch:

On 05/02/13 found a 2" Square Tube with County Cap, up 1.0'

left monument as found,  lowered monument,  removed monument (explain)

On \_\_\_\_\_ DATE \_\_\_\_\_

## SKETCH OF REFERENCE TIES NOT TO SCALE



NAD83 (1996 ADJUSTMENT)  
CASS COUNTY NORTH DATUM

N= 126486.547  
E= 559738.946

Statement of evidence relative to  
this corner is on back of page

I hereby certify that this document and the data contained herein was prepared by me or under my direct supervision.

*Craig E. Johnson*  
\_\_\_\_\_  
Craig E. Johnson  
05/22/13  
DATE

Registration No. 44530

- Land surveyor,  
 County Surveyor,



**A000593573**

OFFICE OF THE COUNTY RECORDER  
CASS COUNTY, MINNESOTA  
CERTIFIED, FILED, AND/OR  
RECORDED ON

6/17/2013 12:42:57 PM

AS DOC #: A000593573

PAGES: 2

REC FEES: 0.00

KATHRYN M. NORBY  
CASS COUNTY RECORDER

BY SR \_\_\_\_\_ Dep

Statement of Evidence:

E-11, North Quarter corner of Section 9, Township 139 North, Range 26 West, 5th Principal Meridian.

- 1863 Alonzo L. Thornton, General Land Office (GLO) Deputy Surveyor set a post for the original corner and referenced it as follows:  
15" W. Pine S 27° W 25 links (16.5 feet)      16" W. Pine N 21° E 15 links (9.9 feet)
- Jun. 1955 Dean M. Anderson, Registered Land Surveyor No. 3091, References the NW corner of Section 9 as depicted on the plat of PATTERSON LAKE SHORE LOTS on file at the Cass County Recorders Office.
- Mar. 1956 Dean M. Anderson, Registered Land Surveyor No. 3091, References the South line of Government Lot 8 as depicted on the plat of REES ANCHORAGE on file at the Cass County Recorders Office.
- Jan. 1967 Dean M. Anderson, Registered Land Surveyor No. 3091, References the NW corner of Section 9 as depicted on a Plat Of Survey on file at the Cass County Recorders Office.
- Sep. 1968 R.F. Schneider, Registered Land Surveyor No. 5740, References the NW corner of Section 9 as depicted on a Plat Of Survey on file at the Cass County Recorders Office.
- Aug. 1971 Dean M. Anderson, Registered Land Surveyor No. 3091, Completed a survey in Government Lot 6 as depicted on a Plat Of Survey on file at the Cass County Recorders Office.
- Oct. 2001 Roger Mustonen, Registered Land Surveyor No. 11946, references the East line of Government Lot 8 as depicted on a Certificate of Survey on file at the Cass County Recorders Office.
- May 2013 J. McDonald found a 2" Square Tube with County Cap. Additional to the Monument, J. McDonald Found 2 prior scarred blazes that he refreshed. Bolton & Menk accepted the found monument as the corner and set reference ties set by Bolton & Menk, as depicted on the face of this certificate.