

# CERTIFICATE OF LOCATION OF GOVERNMENT CORNER

Northeast Corner of Section 13  
 Township 138 N, Range 30 W, 5th P.M.  
 STATE OF MINNESOTA, COUNTY OF Cass



**A000593570**  
 OFFICE OF THE COUNTY RECORDER  
 CASS COUNTY, MINNESOTA  
 CERTIFIED, FILED, AND/OR  
 RECORDED ON  
 6/17/2013 12:42:54 PM  
 AS DOC #: A000593570  
 PAGES: 2  
 REC FEES: 0.00  
**KATHRYN M. NORBY**  
 CASS COUNTY RECORDER  
 BY SR Dep

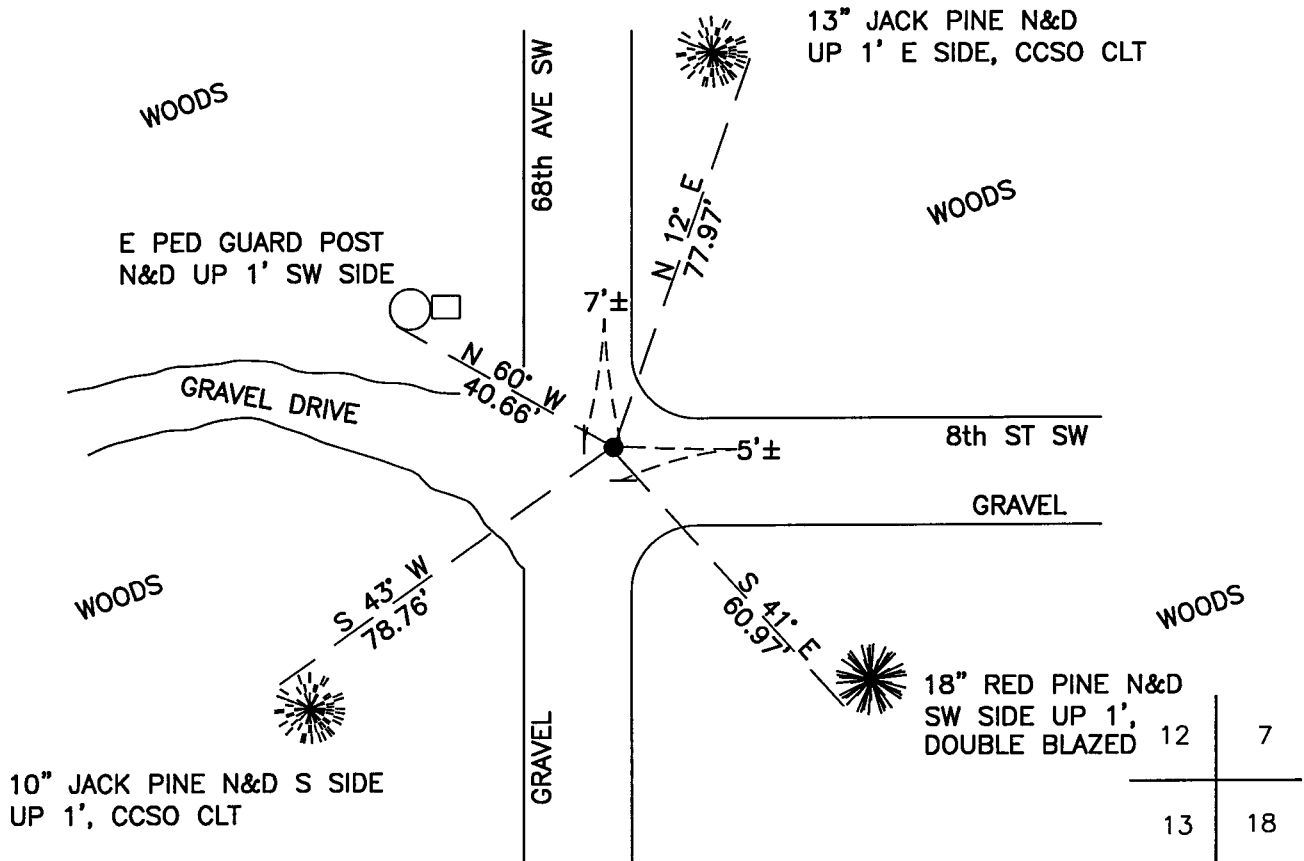
On 11/28/2012, found a(n): 2" Capped Iron Pipe Leaning South West, a 1/2" Iron Pin was Recovered at Vertical Base of 2" Pipe Which Matches Existing Bearing Trees.

- left monument as found
- lowered monument
- removed monument (explain)
- raised monument

On \_\_\_\_\_, set a(n): \_\_\_\_\_

See "Statement of Evidence" for further details (on back)

(reserved for recording data)



## "SKETCH OF REFERENCE TIES"

(not to scale - bearings are magnetic)

Ties are measured to center of monument unless otherwise noted.

UNITS =  Metric  English

### CASS COUNTY SOUTH COORDINATES

Northing: 326262.046  
 Easting: 514693.094

NAD 83/2007 Adjustment.  
 Obtained by RTK GPS observations.

I hereby certify that this survey, plan, or report was prepared by me or under my direct supervision, and that I am a duly Licensed Land Surveyor under the laws of the State of Minnesota.

*Jarrett M. Leas*  
 signature

2-1-13  
 date

Jarrett M. Leas, Minnesota License No. 42619



Statement of Evidence

**Northeast corner Section 13, Township 138 North, Range 30 West, 5th Principal Meridian.**

- July 1865 G.B.Wright, GLO Deputy Surveyor, in the notes of the west boundary of Township 139 North, Range 29 West set a post for the original corner and referenced it as follows:  
12" N. Pine N 70 1/2° E 147 links (97.02 feet) 17" N. Pine S 19 1/2° E 173 links (114.18 feet)  
Said records are on file at the Minnesota Historical Society, St. Paul, Minnesota, copies are filed with the Cass County Surveyor's Office (CCSO).
  
- May 1913 J.W.Curo, County Surveyor, working for Pine River Township, Survey Record No. 298, Book B, pages 289 to 300, on file in the CCSO, states "we find the 3 foot stump of the SE tree and the tall stub of the NE tree plainly marked from which we set the cor. by flat chain from the face of the old B.T. marks and set 2 1/2 by 48 inch galvanized iron pipe, capped on top with rod thru bottom for anchor and set its full length in the ground in a bed of concrete after which the old U.S. trees bear":  
SE 114.18 ft. NE 97.02 ft
  
- 1979 Cass County Highway Department (CCHD), plan for S.A.P. 11-342-01, records of County State Aid Highway Number 42, indicates a found monument by symbol at the intersection of roads and states "2" I.P. INPL." Also note the following witnesses:  
18" J. Pine SW 109.2 feet 5" Pop NE 56.7 feet  
P. P. NW 40.6 feet
  
- 1984 T.Freeman, technician, Cass County Land Department, Cass County Land Corner Record on file in the CCSO indicates that a 1/2 inch steel rod was recovered at the CCHD tie position.
  
- Dec. 1998 Landecker and Associates, Certificate of Survey, copy in the records of the CCSO, indicates a monument found.
  
- Aug. 1999 Landecker and Associates, Certificate of Survey, copy in the records of the CCSO, indicates a monument found.
  
- July 2004 J. Kramer, RLS 23668, Section Subdivision, copy in the records of the CCSO, indicates a position for this corner.
  
- Oct. 2005 B.Hippen, CCSO technician, excavated the corner position and found a 2-1/4 inch outside diameter iron pipe, with plumbers cap, down 0.8 foot, the top 2.5 feet is bent. Placed a 1/2 inch pin, found in hole, over vertical portion of the monument. The following accessories were recovered or established:  
11" Jack Pine N 12° E 77.97 feet 15" Red Pine S 41° E 60.97 feet  
8" Jack Pine S 43° W 78.76 feet Power Post N 60° W 40.66 feet
  
- Nov. 2012 A KLJ survey crew found a 2" Iron Pipe, along with two 1/2" iron pins at the vertical base of pipe, which match county ties shown on the front of this certificate. Jarrett Leas, RLS #42619, after analysis of record and survey information accepts this monument as the correct perpetuation of the corner.