

# CERTIFICATE OF LOCATION OF GOVERNMENT CORNER

East Quarter Corner of Section 7  
Township 138 N, Range 29 W, 5th P.M.  
STATE OF MINNESOTA, COUNTY OF Cass



**A000593565**

OFFICE OF THE COUNTY RECORDER  
CASS COUNTY, MINNESOTA  
CERTIFIED, FILED, AND/OR  
RECORDED ON

6/17/2013 12:42:49 PM

AS DOC #: **A000593565**

PAGES: 2

REC FEES: 0.00

**KATHRYN M. NORBY**  
CASS COUNTY RECORDER

BY SR Dep

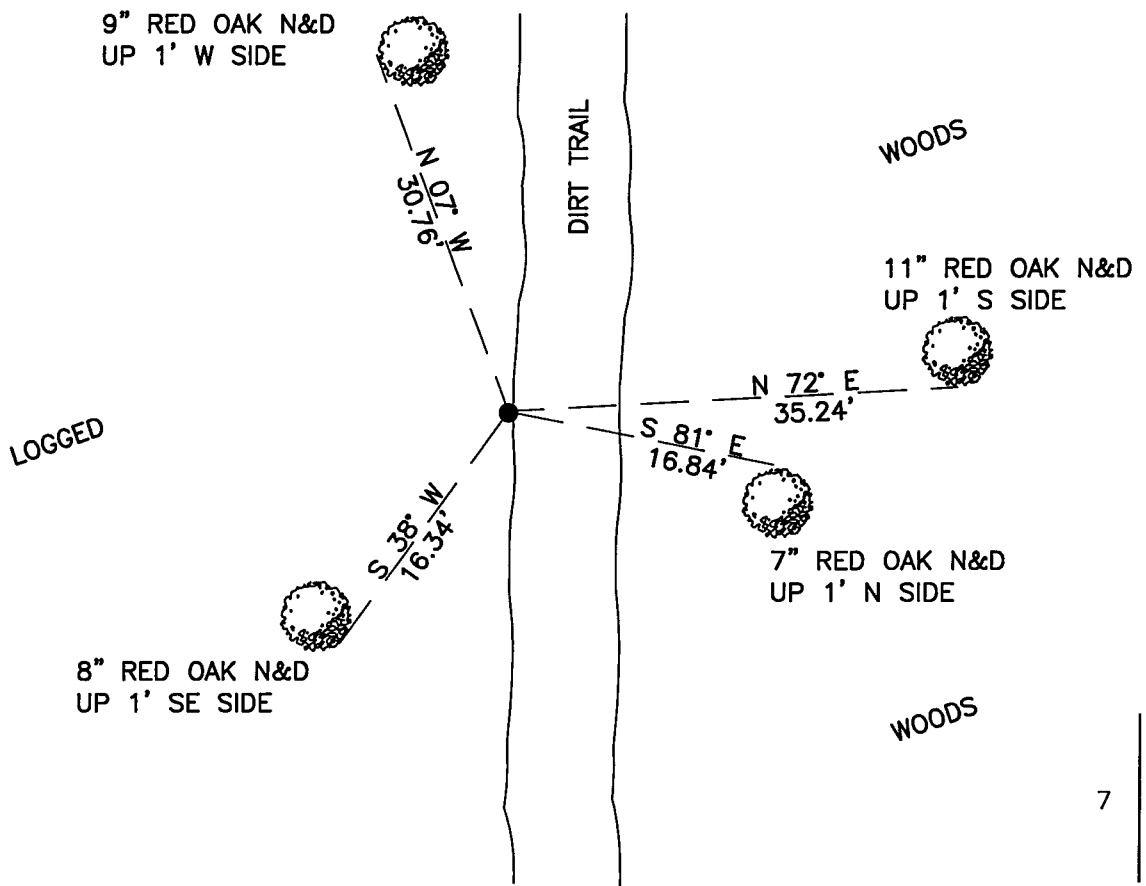
On 11/30/2012, found a(n): 2" Capped Iron Pipe Up 1.0' on  
Westerly Edge of a Trail in Good Condition.

- left monument as found
- removed monument (explain)
- lowered monument
- raised monument

On \_\_\_\_\_, set a(n): \_\_\_\_\_

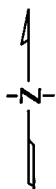
See "Statement of Evidence" for further details (on back)

(reserved for recording data)



### "SKETCH OF REFERENCE TIES"

(not to scale - bearings are magnetic)



Ties are measured to center of monument unless otherwise noted.

UNITS =  Metric  English

### CASS COUNTY SOUTH COORDINATES

Northing: 328896.687  
Easting: 520148.597

NAD 83/2007 Adjustment.  
Obtained by RTK GPS observations.

I hereby certify that this survey, plan, or report was prepared by me or under my direct supervision, and that I am a duly Licensed Land Surveyor under the laws of the State of Minnesota.

signature

2-1-13  
date

Jarrett M. Leas, Minnesota License No. 42619

Page 1 of 2 A000593565



Statement of Evidence

**East Quarter corner of Section 7, Township 138 North, Range 29 West, 5th Principal Meridian.**

- Jul. 1865      G.B.Wright, GLO Deputy Surveyor, in the notes of the subdivision of Township 138 North, Range 30 West set a post for the original corner and referenced it as follows:  
5" Bl. Pine      S 44° E      73 links (48.18')      6" Bl. Pine      N 44° W      37 links (24.42')  
Said records are on file at the Minnesota Historical Society, St. Paul, Minnesota, copies are filed with the Cass County Surveyor's Office (CCSO).
- June 1913      M.A. Kemp, Cass Co. Deputy Surveyor, Survey Record No. 298, Book B, Page 298, Kemp finds U.S. BT's, with the SE still standing and the stump of the NW tree. GLO distance between the two is 72.60' and Kemp's is 73.70', 1.10' long of GLO. Kemp sets the corner by proportional measurement, and the old BT's are now as follows:  
5" Bl. Pine      S 44° E      48.91'      6" Bl. Pine      N 44° W      24.79'  
After establishing the corner position from the BT's, Kemp states "we set a 2X48" galvanized iron pipe with cap and anchor rod set in a bed of cement".
- Nov. 2012      A KLJ survey crew found a 2" Iron Pipe, and is witnessed with the ties shown on the front of this certificate. Jarrett Leas, RLS #42619, after analysis of record and survey information accepts this monument as the correct perpetuation of the corner.