

CERTIFICATE OF LOCATION OF GOVERNMENT CORNER

NW Corner of Section 7, Township 139, Range 31, 5TH P.M.

STATE OF MINNESOTA, County of CASS

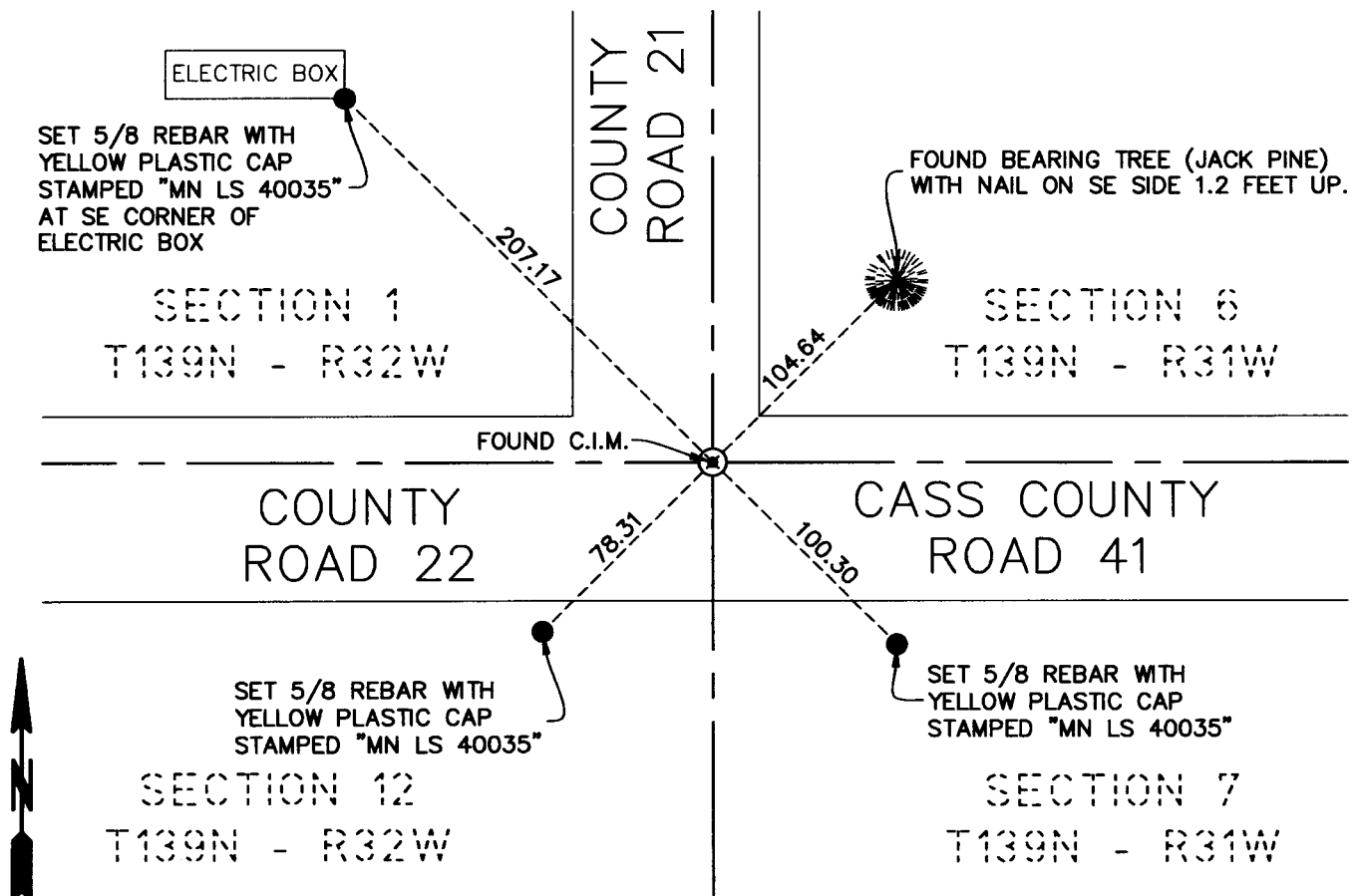
At the corner location shown on the sketch:

On 08-20-09 found a cast iron monument.

left monument as found, lowered monument, removed monument (explain)

On _____ placed a _____

SKETCH OF REFERENCE TIES



Statement of evidence relative to this corner location is on back of page.

I hereby certify that this document and the data contained herein was prepared by me or under my direct supervision.

Michael E. Con 11-6-09
SIGNATURE DATE

Registration No. 40035

- Land Surveyor, Professional Engineer
- County Surveyor, County Engineer



A000592262
OFFICE OF THE COUNTY RECORDER
CASS COUNTY, MINNESOTA
CERTIFIED, FILED, AND/OR
RECORDED ON

5/7/2013 10:39:24 AM

AS DOC #: A000592262

PAGES: 2

REC FEES: 0.00

KATHRYN M. NORBY
CASS COUNTY RECORDER

BY SR _____ Dep

Page 1 of 2 A000592262

STATEMENT OF EVIDENCE

The Northwest Corner of Section 7, Township 139 North, Range 31 West of the 5th Principal Meridian.

In 1860, the original government surveyors established the east line of this township. At the N.W. corner of Section 7, they set a wood post to mark its location and established bearing trees as follows: a 10" Pine, S58°E 42.24 feet; a 8" Pine, S82°W 46.20 feet; a 8" pine, N79°W 20.46 feet.

In April 1897, Lewis Berg, Hubbard County Surveyor, established this corner by using double proportion methods. He set a pine post and established B.T.'s as follows: a 6" Black Pine, N14°E 27.72 feet; a 8" Black Pine, S28°W 39.60 feet; a 7" Black Pine, N55°W 46.86 feet. (County Surveyor Record Book AA, Page 45)

In 1908, John Curo, Cass County Surveyor, began at the S.E. corner of Section 12 and ran north 5280.0 feet. He states the true corner at the N.E. of 12 sets of N53°3'E at 130.30 feet. Curo set a new stake at the true N.E. corner of Section 12 and established B.T.'s as follows: an 8" Jack Pine, S27°17'W 47.00 feet; an 8" Jack Pine, N13°35'E 27.90 feet. He also found a cut B.T. which was a 10" Jack Pine, S4°12'W 13.40 but there is no record on it.

In 1911, Curo returned to this corner, pulled the stake he had set earlier and replaced it with a 2"x 48" iron pipe set in concrete. (Cass County Survey Record Book A, Pages 313 to 317)

In May 1916, Guy Todd, Hubbard County Surveyor, found the iron set by Curo and used it for his survey. He gives no additional information. (County Survey Record Book A, Page 150.)

In September 1916, Guy Todd, Hubbard County Surveyor, and Elmer Horst of Cass County, made a survey on the east boundary of Section 1 to locate corners and tie them in before building judicial road. They tied in Curo's corner marker as follows: an iron N45°E 46.67 feet; an iron N45°W 46.67 feet. (County Survey Record Book A, Page 470)

In May 1989, the Hubbard County Survey Dept. made a field investigation at the N.E. corner of Section 12 to search for evidence. Searched and found the 2" iron pipe in concrete that Curo set in 1911. Also searched for B.T.'s and Todd's iron ties but found nothing. We ran line north and west from this corner and distances compared favorably with those of Todd's. In 1897, Lewis Berg set the corner marker by double proportion methods but the U.S. Manual of Surveying Instructions states this corner should be set by single proportion. In 1908, Curo does not say exactly what he found in place at the N.E. corner of Section 12 but he refers to it as the "true corner." Post records show that "true corner" and "original corner" have the same meaning. It appears by evidence that Curo found the original corner and that he was in a different location than Berg. After reviewing all evidence we decided to accept Curo's iron as a valid location of the original corner.

In September 1993, the Hubbard County Survey Department set a Hubbard County cast iron monument in place to perpetuate Curo's 2" iron set in concrete.

All the notes above are cited from the 1995 Corner Certificate by Thorpe.

On 08-20-09, a survey crew from Ulteig Engineers found a cast iron monument, found one old tie and set new ties as shown.