



A000592115

OFFICE OF THE COUNTY RECORDER
CASS COUNTY, MINNESOTA
CERTIFIED, FILED, AND/OR
RECORDED ON

5/2/2013 11:50:46 AM

AS DOC #: A000592115

PAGES: 2

REC FEES: 0.00

KATHRYN M. NORBY
CASS COUNTY RECORDER

BY SR Dep

Page 1 of 2
A000592115

Index No. N-9

CERTIFICATE OF LOCATION OF GOVERNMENT CORNER

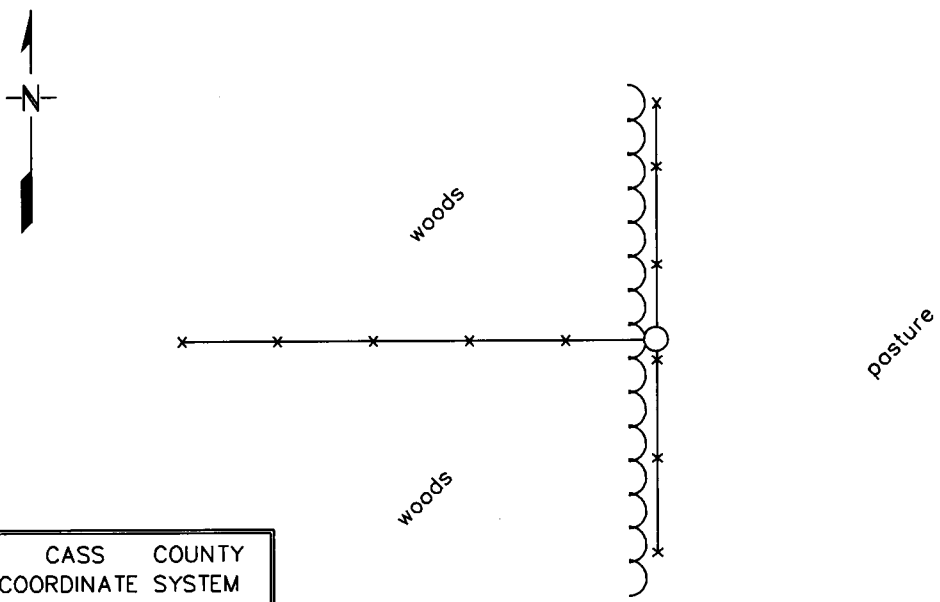
NORTHEAST Corner of Section 20, Township 134, Range 32
5TH Principal Meridian, State of Minnesota, County of CASS

At the corner location shown on the sketch:

On 4/12/11 found a 1/2" I.D. IRON PIPE WITH CAP LLS #16097 AT CORNER FENCE POST
DATE

left monument as found, lowered monument, removed monument (explain)

On _____ Placed a _____
DATE



CASS COUNTY
COORDINATE SYSTEM
NAD 83 1996 ADJ.
N = 193474.264
E = 431597.092

NOTE: BEARINGS OBSERVED WITH A COMPASS.

Statement of evidence for this corner location is on back of this page.

RAL - JUNE 2011
FOM01910.00.00.01

I certify that this document was researched and prepared by me or under my direct supervision.

SIGNATURE *[Signature]* DATE 4/29/13 License Number 47461

Title: Land Surveyor County Surveyor

STATEMENT OF EVIDENCE**Northeast Corner of Section 20, Township 134 North, Range 32 West, 5th P.M.**

The Department of Natural Resources, Division of Lands and Minerals, contacted the following offices for information regarding this corner:

Cass County Recorder
 Cass County Surveyor
 Cass County Highway Dept.
 Westwood Professional Services - Brainerd
 Carnell Land Surveying, LLC
 Arro of Park Rapids, LLC
 Nyberg Surveying
 Festler Land Surveying
 Kramer Leas Deleo, PC
 Widseth Smith Nolting - Baxter

1870 This corner was established by the Government Land Office. A post was set to mark the corner and was witnessed by the following bearing trees:

B. Pine	6"	S69°E	126 links
B. Pine	12"	N40°E	220 links
Dead Pine	14"	S15°W	122 links

1990 A Certificate of Survey of the NE1/4 of Section 20 by Thomas Thiessen, LS #16097, with Comstock and Davis, Inc., shows a set ½" iron pipe with cap RLS 16097 set at a fence corner of fences north, south, east and west.

2005 A Certificate of Survey in Sections 16 and 21 by Bruce Grivna, LS #17253, with Westwood Professional Services in Brainerd shows a found iron monument at this corner.

2011 In April, the DNR survey crew made a search for evidence of the corner and found a ½" iron pipe with cap RLS 16097 at the corner of fences north, south and west. The found iron pipe was accepted as the pipe set by Thiessen in 1990 and the corner location.

East Quarter Corner Section 17 bears N00°09'55"E 2679.26'
 North Quarter Corner Section 21 bears N89°24'44"E 2742.10'

For more information on our survey in this area, please contact the MN DNR, Division of Lands and Minerals, Survey Section, 1601 Minnesota Drive, Brainerd, MN 56401

