

# CERTIFICATE OF LOCATION OF GOVERNMENT CORNER

Northeast Corner of Section 7  
Township 138 N, Range 32 W, 5th P.M.  
STATE OF MINNESOTA, COUNTY OF Cass



A000591924

OFFICE OF THE COUNTY RECORDER  
CASS COUNTY, MINNESOTA  
CERTIFIED, FILED, AND/OR  
RECORDED ON

4/26/2013 11:00:15 AM

AS DOC #: A000591924

PAGES: 2

REC FEES: 0.00

KATHRYN M. NORBY  
CASS COUNTY RECORDER

BY SR Dep

Page 1 of 2 A000591924

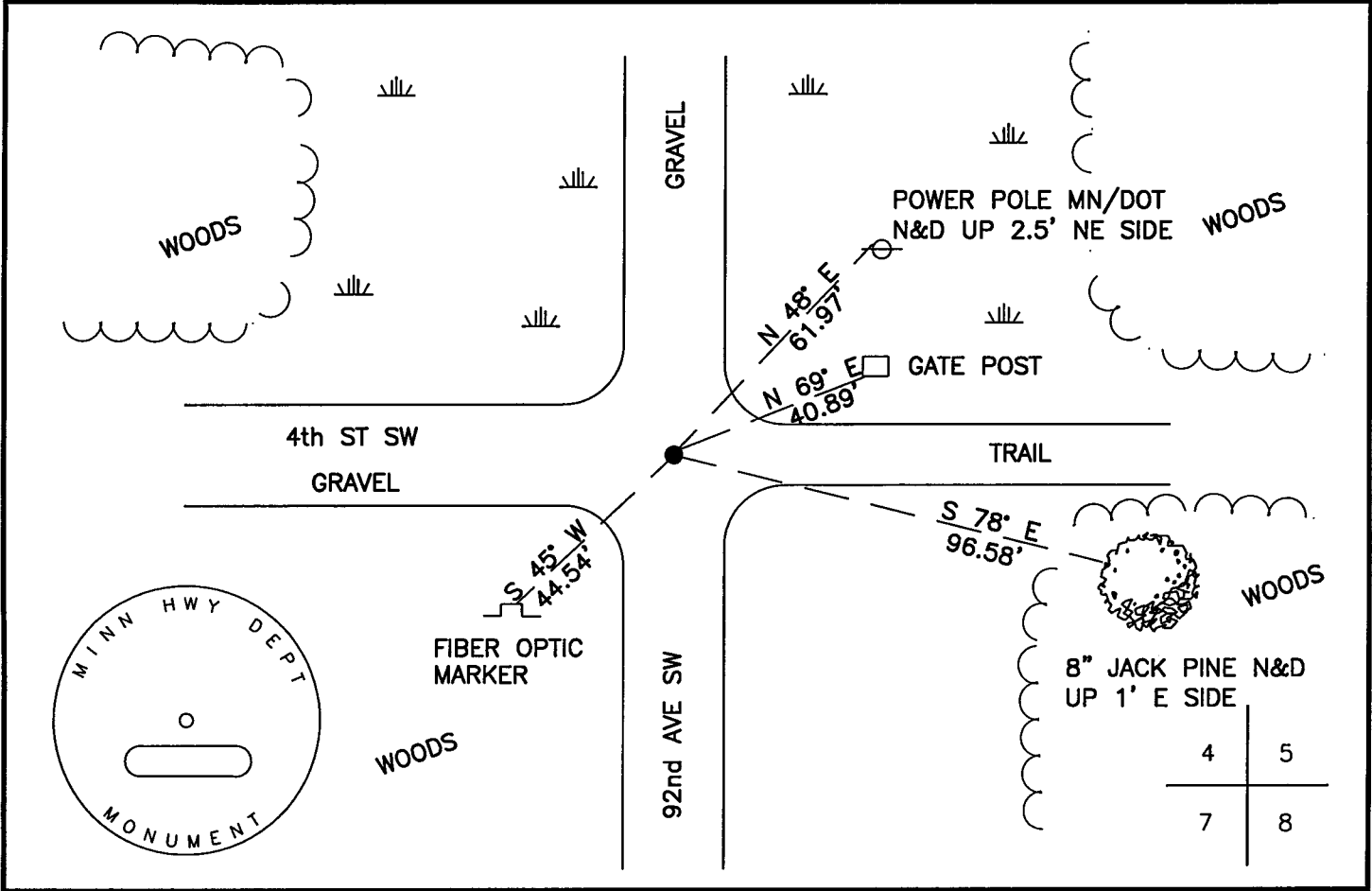
On 10/15/2012, found a(n): MN Hwy Department Cast Iron  
DATE  
Monument Down 0.3' on Centerline of N-S Road and on Centerline of  
Road Heading West

- left monument as found
- lowered monument
- removed monument (explain)
- raised monument

On \_\_\_\_\_, set a(n): \_\_\_\_\_  
DATE

See "Statement of Evidence" for further details (on back)

(reserved for recording data)



### "SKETCH OF REFERENCE TIES"

(not to scale - bearings are magnetic)

Ties are measured to center of monument unless otherwise noted.

UNITS =  Metric  English

### CASS COUNTY SOUTH COORDINATES

Northing: 330997.46  
Easting: 430321.51

NAD 83/2007 Adjustment.  
Obtained by RTK GPS observations.

I hereby certify that this survey, plan, or report was prepared by me or under my direct supervision, and that I am a duly Licensed Land Surveyor under the laws of the State of Minnesota.

signature

3-11-13  
date

Jarrett M. Leas, Minnesota License No. 42619



**Statement of Evidence**

***Northeast corner Section 7, Township 138 North, Range 32 West, Cass County Minnesota***

- 1860 The Original Survey was run and a post was set to mark the corner with the following accessories: 8" Spruce S 08 E 300 links, 12" Tamarack S 38 ½ W 54 links, 12" Spruce N 80 E 365 links, and a 9" Tamarack N 85 ½ W 390 links.
  
- 1912 John Curo, Curo field book 98, page 95, on file at the CCSO, indicates finding no evidence of this corner, stating, "continue transit line a mile north to cor of secs 5,6,7,8 but can find no bearing trees and quit this line,"
  
- 1922 The corner card for this corner, on file at the CCSO, indicates John Curo found a "stake set by some surveyor". No supporting accessories were recovered.
  
- 1997 K. Donaghue, Minnesota Department of Transportation, found a wood post 3' below the road surface and set a cast iron monument above the post. A Certificate of Location was filed as Document # 433376. The following ties were made: Power pole N 48 E 61.97', 5" Aspen S 40 E 138.52' and 4" Aspen S 44 W 133.70' and a 4" Aspen N 77 W 205.04'.
  
- 2012 Kadrmas Lee & Jackson field crews searched the area and recovered a Minnesota Highway Department cast iron monument down 0.3' on centerline of 92<sup>nd</sup> Avenue SW. Also recovered was the power pole (N 48 E 61.97') tie from the 1997 Certificate of Location. The following ties were made: 6" Aspen S 78 E 96.58', Gate Post N 69 E 40.89', and a Fiber optic marker S 45 W 44.54'.
  
- 2012 Jarrett Leas, RLS 42619, after analysis of record and survey information accepts this monument as the true location of the corner.

Contacts pertaining to this corner are as follows:

- Cass County Surveyor's Office
- Cass County Recorder's Office
- Cass County Engineer's Office
- MN Department of Natural Resources
- MN Department of Transportation
- Bruce Skipton RLS 17768