

CERTIFICATE OF LOCATION OF GOVERNMENT CORNER

North Quarter Corner of Section 5
Township 138 N, Range 32 W, 5th P.M.
STATE OF MINNESOTA, COUNTY OF Cass



A000591917

OFFICE OF THE COUNTY RECORDER
CASS COUNTY, MINNESOTA
CERTIFIED, FILED, AND/OR
RECORDED ON

4/26/2013 11:00:08 AM

AS DOC #: A000591917

PAGES: 2

REC FEES: 0.00

KATHRYN M. NORBY
CASS COUNTY RECORDER

BY SR Dep

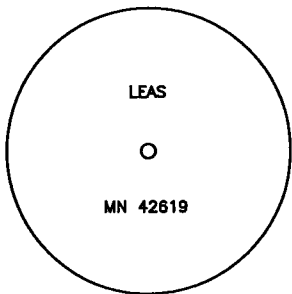
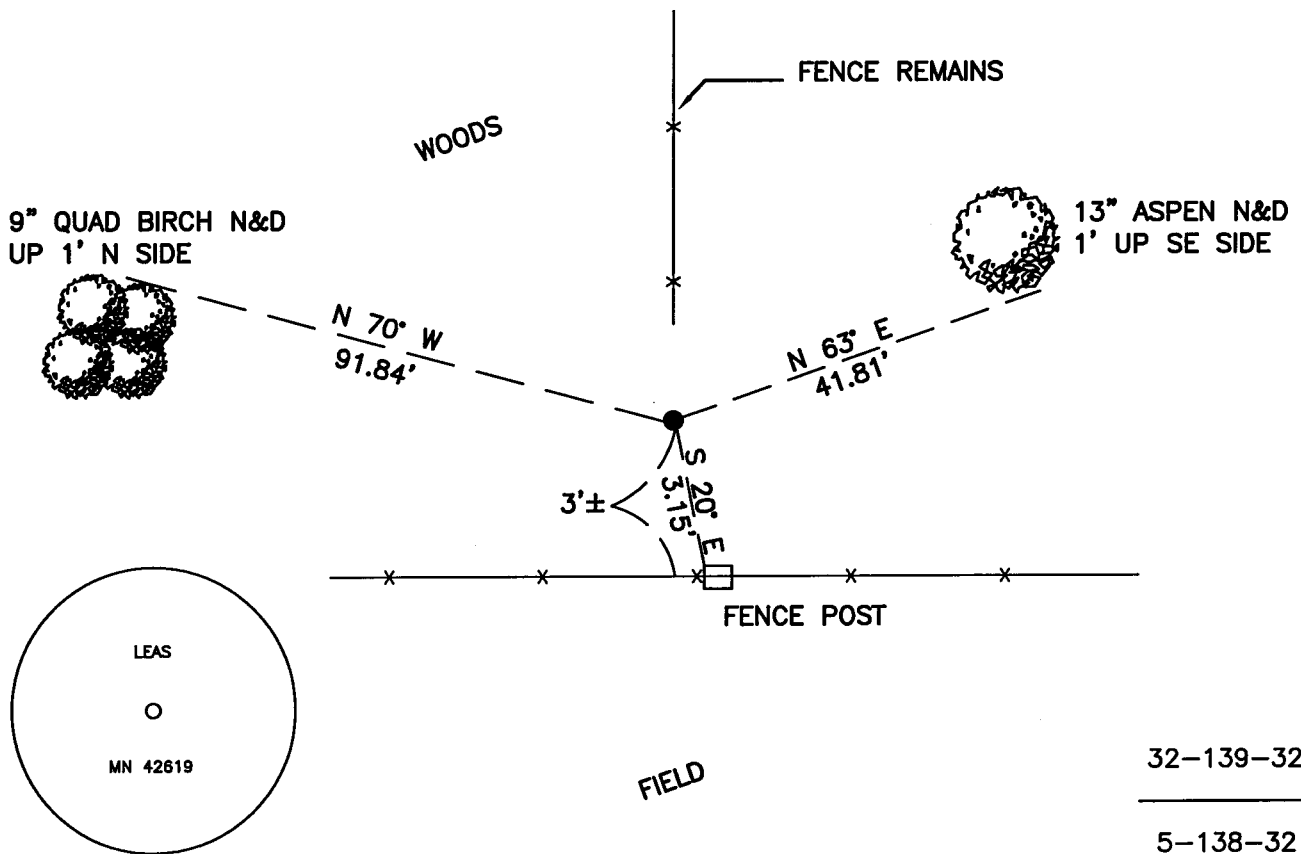
On _____, found a(n): _____
DATE

- left monument as found
- lowered monument
- removed monument (explain)
- raised monument

On 10/16/2012, set a(n): 5/8" X 24" Rebar with Plastic
Cap Stamped Leas MN 42619 Flush With Ground and 3'± North
of Fence Line.

See "Statement of Evidence" for further details (on back)

(reserved for recording data)



32-139-32

5-138-32



"SKETCH OF REFERENCE TIES"
(not to scale - bearings are magnetic)

Ties are measured to center of monument
unless otherwise noted.

UNITS = Metric English

CASS COUNTY SOUTH COORDINATES

Northing: 336329.87

Easting: 427770.36

NAD 83/2007 Adjustment.

Obtained by RTK GPS observations.

I hereby certify that this survey, plan, or report was prepared by me or under my direct supervision, and that I am a duly Licensed Land Surveyor under the laws of the State of Minnesota.

Jarrett M. Leas
signature

3-21-13
date

Jarrett M. Leas, Minnesota License No. 42619

Page 1 of 2 A000591917



Statement of Evidence

North Quarter corner Section 5, Township 138 North, Range 32 West, Cass County Minnesota

- 1860 The Original Survey was run and a post was set to mark the corner with the following accessories: 12" Black Pine N 11 ½ W 105 links and a 7" Black Pine S 27 E 86 links.
- 1908 John Curo set a 4"x4"x48" post proportionally, County Survey Record Book A, page 418-424. The following ties were made: 1 ½" Alder SW 10.95' and a 1 ½" Birch NW 20.95'.
- 2012 Kadrmas Lee & Jackson field crews searched the area and found nothing. This corner was set based on occupation and testimony from Mr. Day. His father, Paul Day, ran the fence heading north and this has always been believed to be the corner. A 5/8" x 24" rebar with a plastic cap stamped "Leas MN 42619" was set flush with the ground to mark the corner. The following ties were made: 13" Aspen N 63 E 41.81', 9" Birch N 70 W 91.84', and a Fence Post S 20 E 3.15'.
- 2012 Jarrett Leas, RLS 42619, after analysis of record and survey information accepts this monument as the true location of the corner.

Contacts pertaining to this corner are as follows:

Cass County Surveyor's Office
Cass County Recorder's Office
Cass County Engineer's Office
MN Department of Natural Resources
MN Department of Transportation
Bruce Skipton RLS 17768