

CERTIFICATE OF LOCATION OF GOVERNMENT CORNER

Northeast Corner of Section 6

Township 138 N, Range 32 W, 5th P.M.

STATE OF MINNESOTA, COUNTY OF Cass



A000591916

OFFICE OF THE COUNTY RECORDER
CASS COUNTY, MINNESOTA
CERTIFIED, FILED, AND/OR
RECORDED ON

4/26/2013 11:00:07 AM

AS DOC #: A000591916

PAGES: 2

REC FEES: 0.00

KATHRYN M. NORBY
CASS COUNTY RECORDER

BY SR Dep

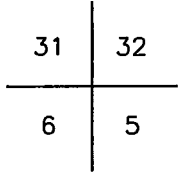
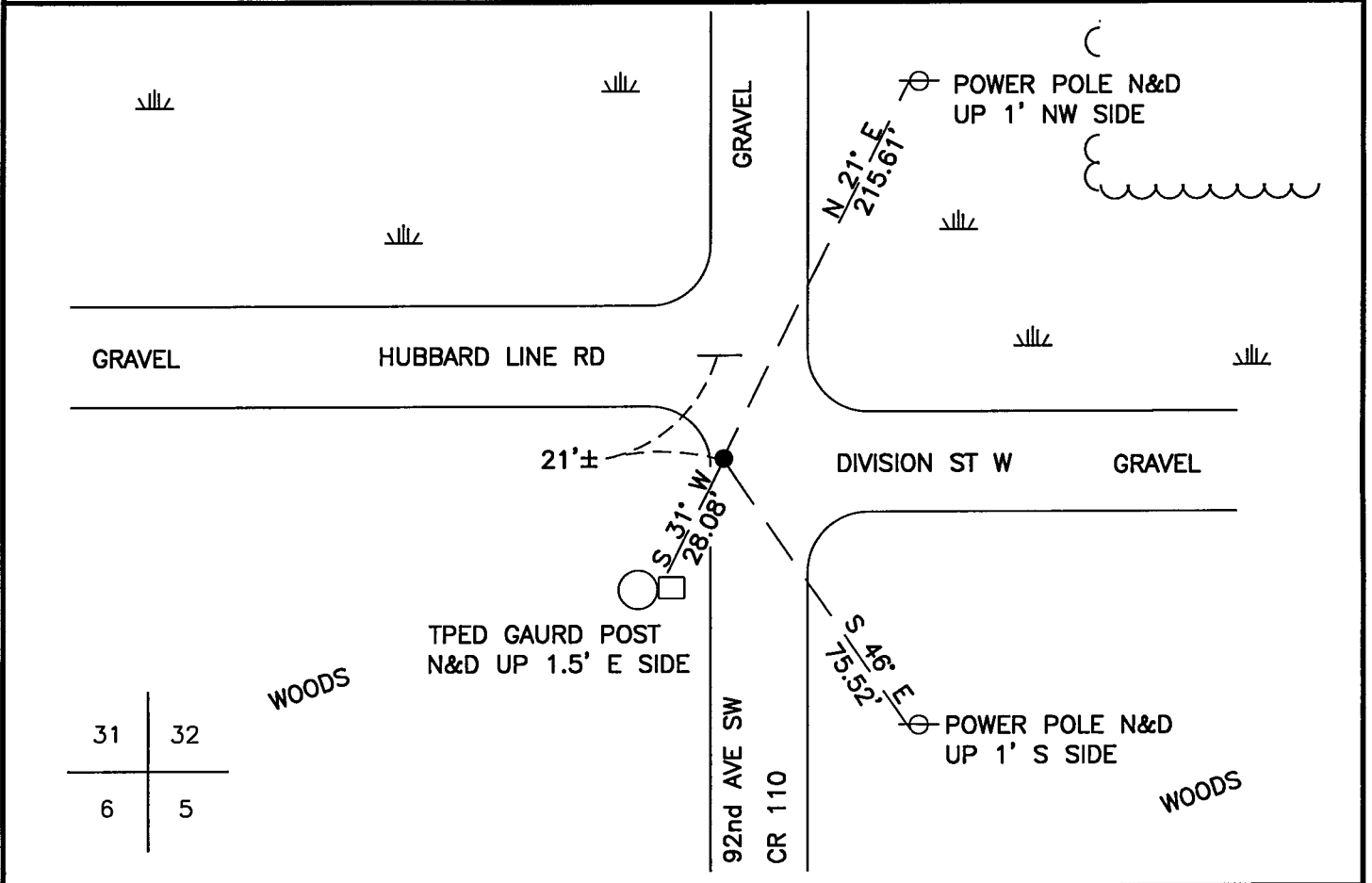
On 10/16/2012, found a(n): Concrete Monument Down 1.3'
on West Shoulder of N-S Road and on Centerline Extension of Road
Heading East. Monument has Iron Pin on South Side.

- left monument as found
- lowered monument
- removed monument (explain)
- raised monument

On _____, set a(n): _____

See "Statement of Evidence" for further details (on back)

(reserved for recording data)



"SKETCH OF REFERENCE TIES"

(not to scale - bearings are magnetic)

Ties are measured to center of monument unless otherwise noted.

UNITS = Metric English

CASS COUNTY SOUTH COORDINATES

Northing: 336324.15

Easting: 425115.34

NAD 83/2007 Adjustment.
Obtained by RTK GPS observations.

I hereby certify that this survey, plan, or report was prepared by me or under my direct supervision, and that I am a duly Licensed Land Surveyor under the laws of the State of Minnesota.

signature

3-11-13
date

Jarrett M. Leas, Minnesota License No. 42619



Statement of Evidence

Northeast corner Section 6, Township 138 North, Range 32 West, Cass County Minnesota

- 1860 The Original Survey was run and a post was set to mark the corner with the following accessories: 4" Tamarack S 9 ½ E 62 links, 10" Aspen S 15 W 125 links, and a 14" Tamarack N 73 E 165 links.
- 1908 John Curo set a stake, Book A, page 418-424
- 1912 John Curo set a 8"x8"x36" set a concrete post with the following accessories: 6" Tamarack N 20-08 W 12.72', and a 6" Poplar stump S 44-34 E 50.29'.
- 1997 K. Donaghue with the Minnesota Department of Transportation found a concrete monument down 1.3' and set a ¾" iron pin on the south edge of the concrete monument. A Certificate of Location was filed as Document #433372. The following accessories were made: Power Pole N 21 E 215.61', 5" Aspen S 49 E 166.91', and a 4" Aspen S 34 W 116.74'.
- 2012 Kadrmas Lee & Jackson field crews searched the area and recovered the concrete monument with ¾" pin on south side of it and the power pole tie from 1997. The following ties were made: Power pole S 46 E 75.52' and Telephone pedestal guard post S 31 W 28.08'.
- 2012 Jarrett Leas, RLS 42619, after analysis of record and survey information accepts this monument as the true location of the corner.

Contacts pertaining to this corner are as follows:

Cass County Surveyor's Office
Cass County Recorder's Office
Cass County Engineer's Office
MN Department of Natural Resources
MN Department of Transportation
Bruce Skipton RLS 17768