

CERTIFICATE OF LOCATION OF GOVERNMENT CORNER

East Quarter Corner of Section 31

Township 139 N, Range 28 W, 5th P.M.

STATE OF MINNESOTA, COUNTY OF Cass



A000591552

OFFICE OF THE COUNTY RECORDER
CASS COUNTY, MINNESOTA
CERTIFIED, FILED, AND/OR
RECORDED ON

4/15/2013 10:53:22 AM

AS DOC #: A000591552

PAGES: 2

REC FEES: 0.00

KATHRYN M. NORBY
CASS COUNTY RECORDER

BY SR Dep

On _____, found a(n): _____
DATE

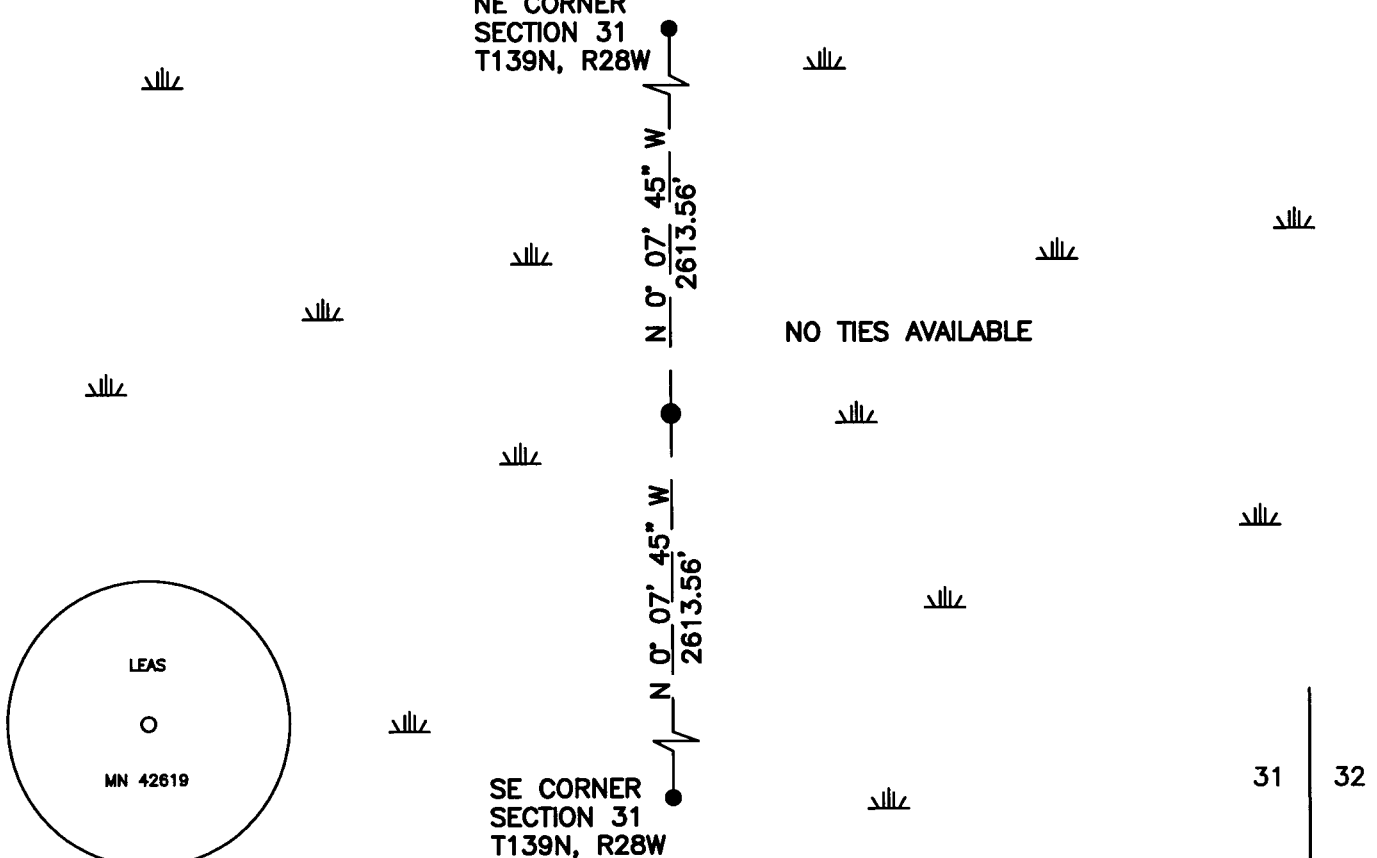
- left monument as found
- lowered monument
- removed monument (explain)
- raised monument

On 12/19/2012, set a(n): 5/8"X48" Rebar With Plastic Cap
DATE
Stamped "Leas MN 42619" In Swamp.

See "Statement of Evidence" for further details (on back)

(reserved for recording data)

NE CORNER
SECTION 31
T139N, R28W



"SKETCH OF REFERENCE TIES"
(not to scale - bearings are magnetic)

Ties are measured to center of monument unless otherwise noted.

UNITS = Metric English

CASS COUNTY SOUTH COORDINATES

Northing: 339284.353

Easting: 551867.547

NAD 83/2007 Adjustment.

Obtained by RTK GPS observations.

I hereby certify that this survey, plan, or report was prepared by me or under my direct supervision, and that I am a duly Licensed Land Surveyor under the laws of the State of Minnesota.

signature

3-21-13
date

Jarrett M. Leas, Minnesota License No. 42619

Page 1 of 2 A000591552

Statement of Evidence

East Quarter corner of Section 31, Township 139 North, Range 28 West, 5th Principal Meridian.

- 1864 The US General Land Office, in the notes of the subdivision of Township 139 North, Range 29 West set a post for the original corner and referenced it as follows:
10" Tam. N 70° E 8 links 4" W Birch S 65° W 13 links
Said records are on file at the Minnesota Historical Society, St. Paul, Minnesota, copies are filed with the Cass County Surveyor's Office (CCSO).
- 1918 Ben Clark, RLS 231, Survey Record 434, Book C, Page 298, on file in the CCSO, indicates setting a 3' long poplar post, no trees near.
- 1919 Ben Clark, RLS 231, Survey Record 434, Book C, Page 336, on file in the CCSO, indicates a 4' long IP was set after finding the 1918 Poplar post, and witnessed by the following:
6" Poplar S 15° W 54.5 feet
- 1922 Ben Clark RLS 231, Document No. 69801, on file in the CCSO, a county resurvey of section 31 indicates an iron monument.
- 2012 KLJ field crews search, and find no evidence of the corner. KLJ computes a lost corner position by a single proportion between the found SE and NE corners of said section, a distance of 5227.12' on a bearing of N0°07'45"W and sets a 5/8X24" rebar with a plastic cap stamped "Leas MN 42619". The new monument is witnessed with the ties shown on the front of this certificate. Jarrett Leas, RLS #42619, after analysis of record and survey information accepts this position as the correct perpetuation of the corner.

