

CERTIFICATE OF LOCATION OF GOVERNMENT CORNER

Northeast Corner of Section 32
 Township 139 N, Range 28 W, 5th P.M.
 STATE OF MINNESOTA, COUNTY OF Cass



A000591551

OFFICE OF THE COUNTY RECORDER
 CASS COUNTY, MINNESOTA
 CERTIFIED, FILED, AND/OR
 RECORDED ON

4/15/2013 10:53:21 AM

AS DOC #: A000591551

PAGES: 2

REC FEES: 0.00

KATHRYN M. NORBY

CASS COUNTY RECORDER

BY SR Dep

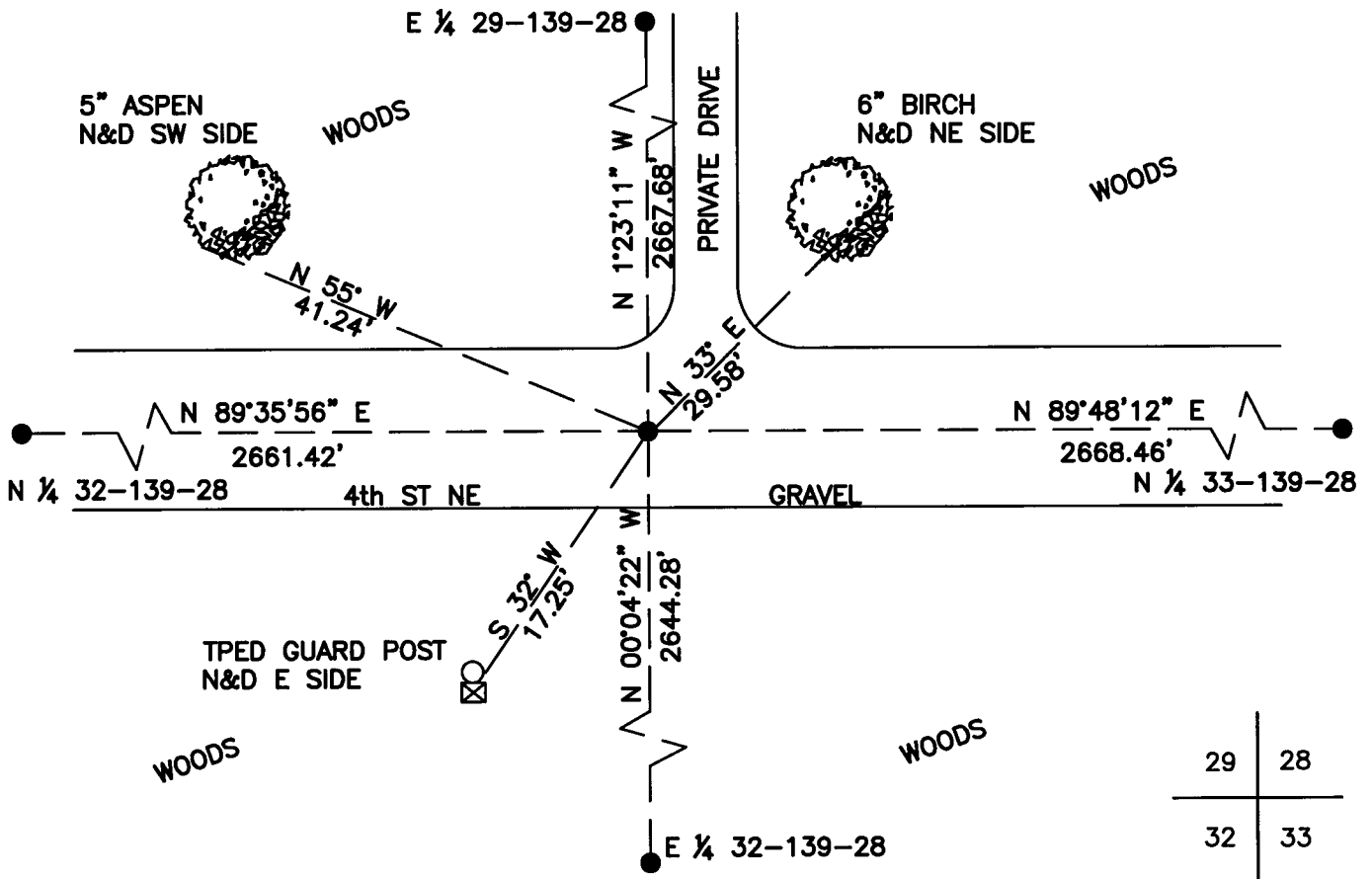
On _____, found a(n): _____
DATE

- left monument as found
- lowered monument
- removed monument (explain)
- raised monument

On 12/20/2012, set a(n): 5/8"X24" Rebar With Plastic Cap
DATE
 Stamped "Leas MN 42619" Down 0.5' on ϕ .

See "Statement of Evidence" for further details (on back)

(reserved for recording data)



"SKETCH OF REFERENCE TIES"

(not to scale - bearings are magnetic)

Ties are measured to center of monument unless otherwise noted.

UNITS = Metric English

CASS COUNTY SOUTH COORDINATES

Northing: 341946.653

Easting: 557169.655

NAD 83/2007 Adjustment.

Obtained by RTK GPS observations.

I hereby certify that this survey, plan, or report was prepared by me or under my direct supervision, and that I am a duly Licensed Land Surveyor under the laws of the State of Minnesota.

Jarrett M. Leas
 signature

3-21-13
 date

Jarrett M. Leas, Minnesota License No. 42619

Page 1 of 2 A000591551

Statement of Evidence

Northeast corner of Section 32, Township 139 North, Range 28 West, 5th Principal Meridian.

- 1864 The US General Land Office, in the notes of the subdivision of Township 139 North, Range 29 West set a post for the original corner and referenced it as follows:
12" Aspen N 40° E 17 links 11" Aspen S 48° E 9 links
11" Fir S 41° W 29 links 10" Aspen N 50° W 10 links
Said records are on file at the Minnesota Historical Society, St. Paul, Minnesota, copies are filed with the Cass County Surveyor's Office (CCSO).
- 1918 Ben Clark, RLS 231, Survey Record 434, Book C, page 304 on file in the CCSO, indicates a 5" square by 3' Poplar post was set and witnessed by the following:
7" Aspen S 51° W 28.9 feet 6" Aspen S 22° E 36.2 feet
- 1919 Ben Clark, RLS 231, Survey Record 434, Book C, page 336, on file in the CCSO, indicates an IM was set, stating, "then being satisfied this is the true cor. I set iron pipe stamp on cap S. 28-29-32-33."
- 1922 Ben Clark RLS 231, Document No. 69796, on file in the CCSO, a county resurvey of sections 27, 28, 33, and 34 indicates an iron monument.
- 1939 The corner card for this corner on file at the CCSO, indicates the CCC Washburn Lake field book no. 12, page 31 started east from the found corner at the Northeast of section 31. Page 34 indicates at 5280' from west, an approximate corner was set. KLJ attempts to locate the CCC field books or copies were unsuccessful.
- 2012 KLJ field crews search, and find no evidence of the corner. The new position was computed by a double proportion using the following corners: EQ 29, NQ 33, EQ 32, and the NQ 32. A 5/8X24" rebar with a plastic cap stamped "Leas MN 42619" marks the new calculated corner position. The new monument is witnessed with the ties shown on the front of this certificate. Jarrett Leas, RLS #42619, after analysis of record and survey information accepts this position as the correct perpetuation of the corner.