

# CERTIFICATE OF LOCATION OF GOVERNMENT CORNER

East Quarter Corner of Section 28  
Township 139 N , Range 28 W , 5th P.M.  
STATE OF MINNESOTA, COUNTY OF Cass



**A000591545**

**OFFICE OF THE COUNTY RECORDER  
CASS COUNTY, MINNESOTA  
CERTIFIED, FILED, AND/OR  
RECORDED ON**

4/15/2013 10:53:15 AM

AS DOC #: A000591545

PAGES: 2

REC FEES: 0.00

**KATHRYN M. NORBY  
CASS COUNTY RECORDER**

BY SR Dep

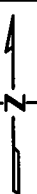
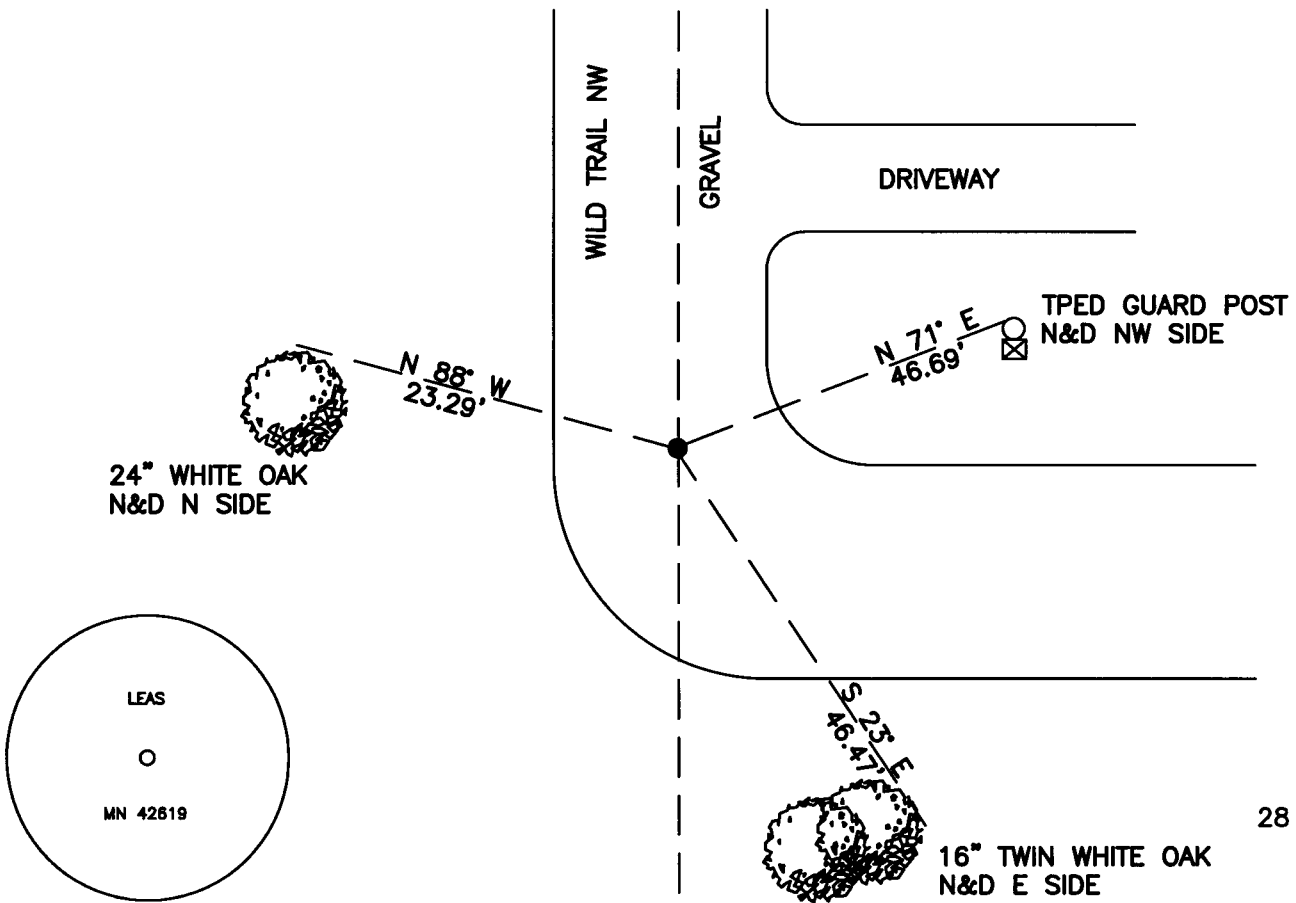
On 12/14/2012, found a(n): 1/2" Iron Pipe Down 0.3', Bent  
DATE  
Northerly. Pipe was Straightened and Replaced as an Accessory Next to  
New Monument.

- |  |   |
|--|---|
| <input type="checkbox"/> left monument as found                | <input type="checkbox"/> lowered monument |
| <input checked="" type="checkbox"/> removed monument (explain) | <input type="checkbox"/> raised monument  |

On 12/14/2012, set a(n): 5/8"X24" Rebar With Plastic Cap  
DATE  
Stamped "Leas MN 42619" Down 0.3' in Place of 1/2" Iron Pipe.

See "Statement of Evidence" for further details (on back)

(reserved for recording data)



**"SKETCH OF REFERENCE TIES"**  
(not to scale - bearings are magnetic)

Ties are measured to center of monument unless otherwise noted.

UNITS =  Metric  English

CASS COUNTY SOUTH COORDINATES

Northing: 344636.205  
Easting: 562468.485

NAD 83/2007 Adjustment.  
Obtained by RTK GPS observations.

I hereby certify that this survey, plan, or report was prepared by me or under my direct supervision, and that I am a duly Licensed Land Surveyor under the laws of the State of Minnesota.

*Jarrett M. Leas*  
signature  
Jarrett M. Leas, Minnesota License No. 42619

3-21-13  
date

Page 1 of 2 A000591545

Statement of Evidence

**East Quarter corner of Section 28, Township 139 North, Range 28 West, 5th Principal Meridian.**

- 1864 The US General Land Office, in the notes of the subdivision of Township 139 North, Range 29 West set a post for the original corner and referenced it as follows:  
10" Aspen East 5 links 14" Aspen S 20° W 10 links  
Said records are on file at the Minnesota Historical Society, St. Paul, Minnesota, copies are filed with the Cass County Surveyor's Office (CCSO).
- 1919 Ben Clark, RLS 231, Survey Record 434, Book C, Page 316, on file in the CCSO, indicates a found post stating, "at 5324 ft. the ¼ S. bet. Sec. 27-28 and close on a carpet tack in center of post.
- 1919 Ben Clark, RLS 231, Survey Record 434, Book C, Page 339, on file in the CCSO, indicates an IP was set, "then we went to the ¼ S. bet. Sec. 28-27 set an iron pipe 4 ft. by 2½ in."
- 1922 Ben Clark RLS 231, Document No. 69796, on file in the CCSO, a county resurvey of sections 27, 28, 33, and 34 indicates an iron monument.
- 2012 A KLJ survey crew found a 1/2 iron pipe down 0.3' bent northerly. The 1/2" pipe was removed and an attempt to locate the 1919 Clark pipe was made, which turned up nothing. A 5/8"X24" rebar with a plastic cap stamped "Leas MN 42619" was set in place at the vertical base of the found 1/2" IP. The 1/2" IP was straightened and set beside the new monument and is witnessed with the ties shown on the front of this certificate. Jarrett Leas, RLS #42619, after analysis of record and survey information accepts this monument as the correct perpetuation of the corner.

