

CERTIFICATE OF LOCATION OF GOVERNMENT CORNER

North Quarter Corner of Section 28
Township 139 N, Range 28 W, 5th P.M.
STATE OF MINNESOTA, COUNTY OF Cass



A000591543

OFFICE OF THE COUNTY RECORDER
CASS COUNTY, MINNESOTA
CERTIFIED, FILED, AND/OR
RECORDED ON

4/15/2013 10:53:13 AM

AS DOC #: A000591543

PAGES: 2

REC FEES: 0.00

KATHRYN M. NORBY
CASS COUNTY RECORDER

BY SR Dep

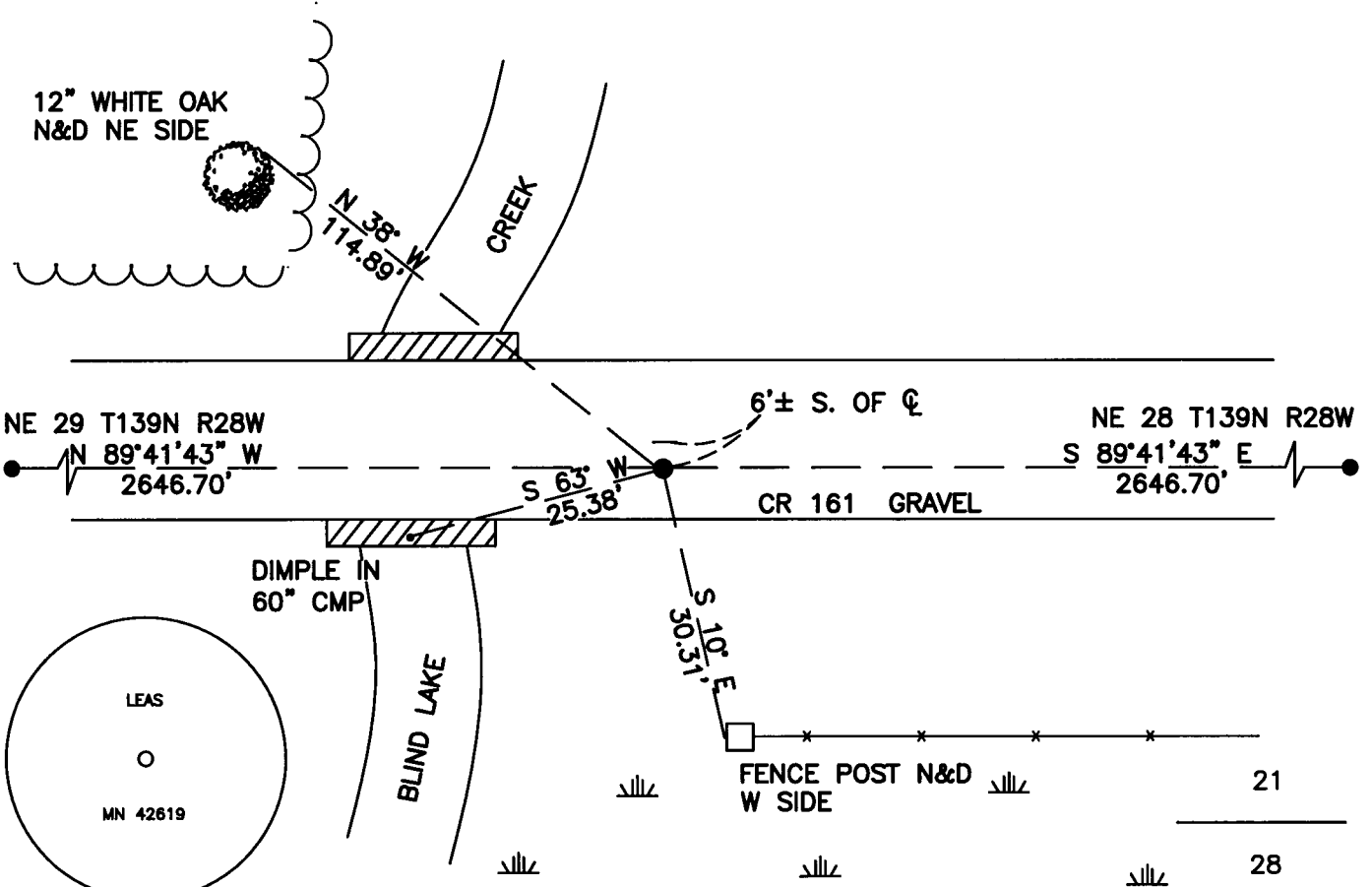
On _____, found a(n): _____
DATE

- left monument as found
- lowered monument
- removed monument (explain)
- raised monument

On 12/18/2012, set a(n): 5/8"X24" Rebar With Plastic Cap
DATE
Stamped "Leas MN 42619" Down 0.5' and 6'± South of \odot .

See "Statement of Evidence" for further details (on back)

(reserved for recording data)



"SKETCH OF REFERENCE TIES" (not to scale - bearings are magnetic)

Ties are measured to center of monument unless otherwise noted.

UNITS = Metric English

CASS COUNTY SOUTH COORDINATES

Northing: 347264.728

Easting: 559776.187

NAD 83/2007 Adjustment.

Obtained by RTK GPS observations.

I hereby certify that this survey, plan, or report was prepared by me or under my direct supervision, and that I am a duly Licensed Land Surveyor under the laws of the State of Minnesota.

signature
Jarrett M. Leas, Minnesota License No. 42619

3-21-13
date

Page 1 of 2 A000591543

Statement of Evidence

North Quarter corner of Section 28, Township 139 North, Range 28 West, 5th Principal Meridian.

- 1864 The US General Land Office, in the notes of the subdivision of Township 139 North, Range 29 West set a post for the original corner and referenced it as follows:
10" Aspen S 30° W 31 links 8" W Birch N 63° E 50 links
Said records are on file at the Minnesota Historical Society, St. Paul, Minnesota, copies are filed with the Cass County Surveyor's Office (CCSO).
- 1917 John Curo, RLS 1428, Curo Field Book 206, page 114, indicates a search was made. The original corner and bearing trees are all gone.
- 1919 Ben Clark, RLS 231, Survey Record 434, Book C, on file in the CCSO, page 315 states, "then set ¼ s at 2645.9 ft. hub set temp. in road". Page 336 indicates a stamped 2½X48" iron pipe was set in the center of a road. Page 323 states, "went to the ¼ S. corner bet sec. 21-28 a iron post in town road". 1919 set corner is witnessed by:
9" Poplar S 30° W 62.7'
- 1922 Ben Clark RLS 231, Document No. 69796, on file in the CCSO, a county resurvey of sections 27, 28, 33, 34 indicates an iron monument.
- 1939 The corner card for this corner on file at the CCSO, indicates the CCC Washburn Lake field book no. 13, page 31 set an approximate corner, stating, "at 2640' from west – set approx. cor 2" Aspen". KLJ attempts to locate the CCC field books or copies were unsuccessful.
- 2012 KLJ field crews search, and find no evidence of the corner. KLJ computes a lost corner position from A single proportion between the found NW and NE corners of said section, splitting the overall distance of 5293.40', which matches Clark's 1919 distance within 0.8', on a bearing of S89°41'43"E and sets a 5/8X24" rebar with a plastic cap stamped "Leas MN 42619". The new monument is witnessed with the ties shown on the front of this certificate. Jarrett Leas, RLS #42619, after analysis of record and survey information accepts this position as the correct perpetuation of the corner.

