

# CERTIFICATE OF LOCATION OF GOVERNMENT CORNER

Northeast Corner of Section 29  
 Township 139 N , Range 28 W , 5th P.M.  
 STATE OF MINNESOTA, COUNTY OF Cass



A000591542

OFFICE OF THE COUNTY RECORDER  
 CASS COUNTY, MINNESOTA  
 CERTIFIED, FILED, AND/OR  
 RECORDED ON

4/15/2013 10:53:12 AM

AS DOC #: A000591542

PAGES: 2

REC FEES: 0.00

KATHRYN M. NORBY  
 CASS COUNTY RECORDER

BY SR Dep

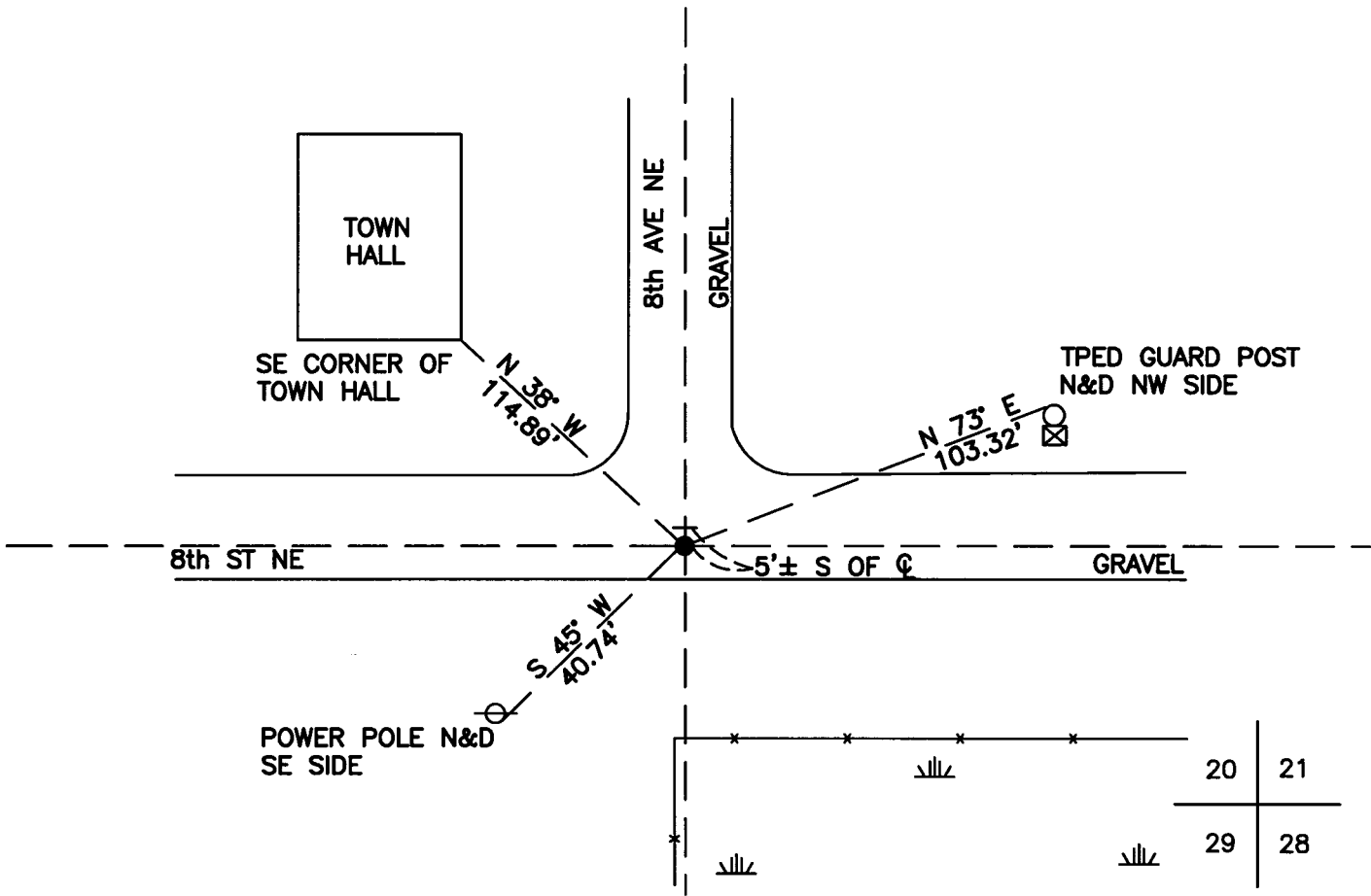
On 12/14/2012, found a(n): Telspar Monument Down 0.8', 5'±  
DATE  
South of 8th St NE ☐, and on 8th Ave NE ☐.

- left monument as found       lowered monument  
 removed monument (explain)       raised monument

On \_\_\_\_\_, set a(n): \_\_\_\_\_  
DATE

See "Statement of Evidence" for further details (on back)

(reserved for recording data)



|  |    |    |
|--|----|----|
|  | 20 | 21 |
|  | 29 | 28 |

## "SKETCH OF REFERENCE TIES"

(not to scale - bearings are magnetic)

Ties are measured to center of monument unless otherwise noted.

UNITS =  Metric  English

## CASS COUNTY SOUTH COORDINATES

Northing: 347278.801

Easting: 557129.521

NAD 83/2007 Adjustment.

Obtained by RTK GPS observations.

I hereby certify that this survey, plan, or report was prepared by me or under my direct supervision, and that I am a duly Licensed Land Surveyor under the laws of the State of Minnesota.

signature  
 Jarrett M. Leas, Minnesota License No. 42619

3-21-13  
 date

Page 1 of 2 A000591542

Statement of Evidence

**Northeast corner of Section 29, Township 139 North, Range 28 West, 5th Principal Meridian.**

- Apr. 1864 The US General Land Office, in the notes of the subdivision of Township 139 North, Range 29 West set a post for the original corner and referenced it as follows:  
20" Y Pine N 45° E 36 links 5" W Birch S 24° E 25 links  
5" W Pine S 68° W 17 links 7" W Pine N 21° W 20 links  
Said records are on file at the Minnesota Historical Society, St. Paul, Minnesota, copies are filed with the Cass County Surveyor's Office (CCSO).
- Oct. 1908 John Curo, RLS 1428, Survey Record 165, Book A, page 364, on file in the CCSO, indicates a stake was set, stating "We find the NE & NW bearing trees plainly marked from which we set a square stake for the true corner".
- Dec. 1911 John Curo, RLS 1428, Survey Record 165, Book A, page 367, on file in the CCSO, indicates Mr. Curo pulls up the wood stake and sets a capped 2X48" galvanized iron pipe in its place.
- Dec. 1917 John Curo, RLS 1428, Curo Field Book 206, page 113, indicates finding the previously set IM.
- Sept. 1918 Ben Clark, RLS 231, Survey Record 434, Book C, Page 302, on file in the CCSO, indicates finding iron post in road.
- Mar. 1922 Ben Clark RLS 231, Document No. 69796, on file in the CCSO, a county resurvey of sections 27, 28, 33, 34 indicates an iron monument.
- 1939 The corner card for this corner on file at the CCSO, indicates the CCC Washburn Lake field book no. 13, page 31, found the corner. The corner card also indicates that page 34 references this corner, "at 5263' from west-road N." KLJ attempts to locate the CCC field books or copies were unsuccessful.
- 1982 The CCSO found a large spike at the approximate intersection of 8<sup>th</sup> St. NE and 8<sup>th</sup> Ave NE and is witnessed by the following:  
Power Pole S 45° W 49.18 feet Fence Post South 25.10'
- 1992 Terry Freeman, RLS 21367 of Landecker & Assoc. of Walker Inc., County Record Book D of plats, page 29, document no. 334592, indicates an iron monument set.
- Nov. 2012 A KLJ survey crew found a Telspar Monument, and is witnessed with the ties shown on the front of this certificate. Jarrett Leas, RLS #42619, after analysis of record and survey information accepts this monument as the correct perpetuation of the corner

