

CERTIFICATE OF LOCATION OF GOVERNMENT CORNER

NE Corner of Section 33, Township 137N, Range 29W, 5th p.m., State of Minnesota, County of Cass

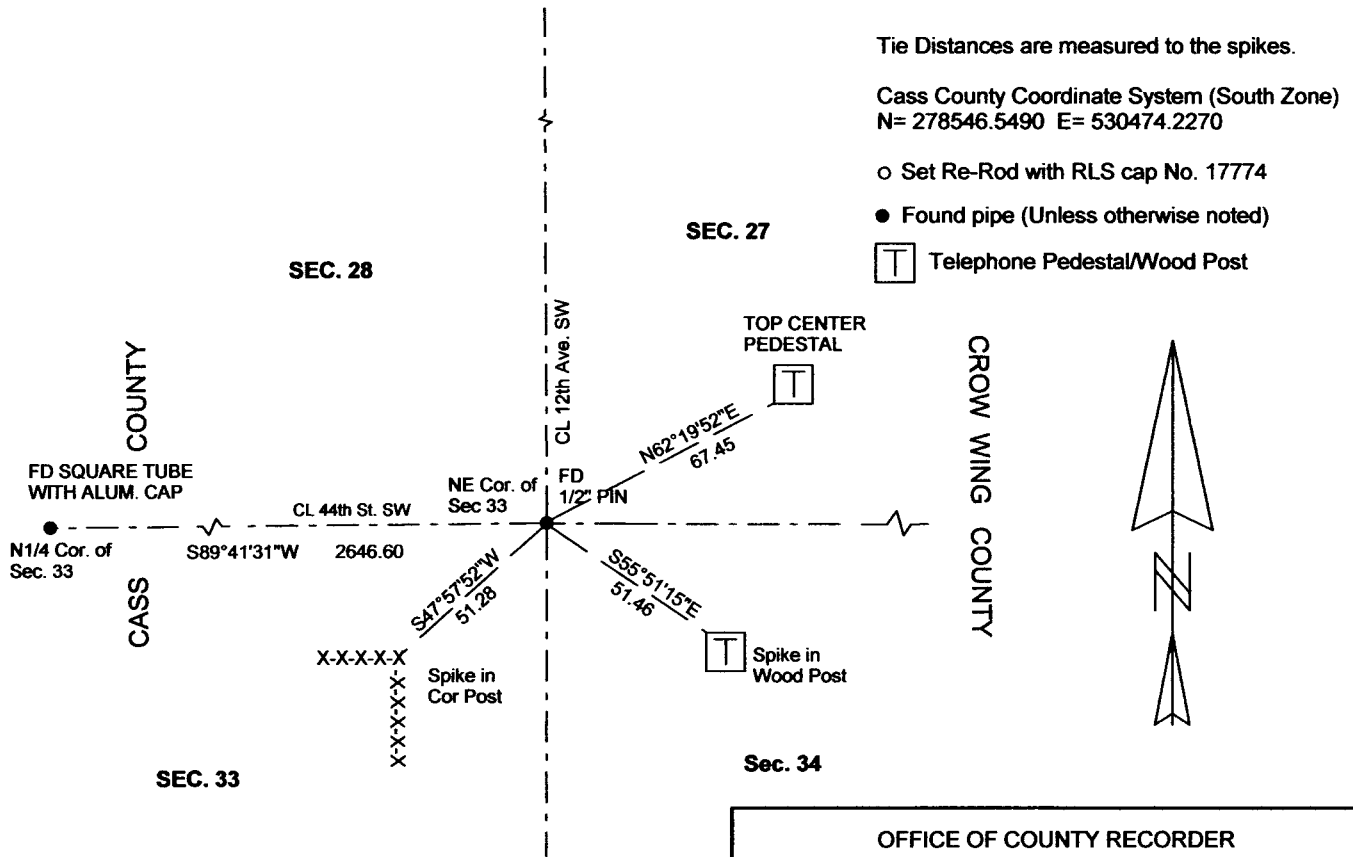
At the corner location shown on the sketch:

On 04/09/2012 found a 1/2" PIN
Date

left monument as found lowered monument removed monument (explain)

On _____ placed a _____
Date

SKETCH OF REFERENCE TIES



Tie Distances are measured to the spikes.

Cass County Coordinate System (South Zone)
N= 278546.5490 E= 530474.2270

○ Set Re-Rod with RLS cap No. 17774

● Found pipe (Unless otherwise noted)

☐ Telephone Pedestal/Wood Post

NOT TO SCALE

Statement of evidence relative to this corner location is on back of page.

I hereby certify that this document and the data contained herein was prepared by me or under my direct supervision.

Marvin R. Kohout 27 SEPT 2012
Marvin R. Kohout Date

Registration No. 17774

Land surveyor

OFFICE OF COUNTY RECORDER



A000591525

**OFFICE OF THE COUNTY RECORDER
CASS COUNTY, MINNESOTA
CERTIFIED, FILED, AND/OR
RECORDED ON**

4/15/2013 10:52:55 AM

AS DOC #: A000591525

PAGES: 2

REC FEES: 0.00

**KATHRYN M. NORBY
CASS COUNTY RECORDER**

BY SR Dep

Page 1 of 2 A000591525



STATEMENT OF EVIDENCE:

NORTHEAST CORNER OF SECTION 33, TOWNSHIP 137 N., RANGE 29 W., 5TH P.M.

- 1865 JULY DEPUTY SURVEYOR THOMAS B. WALKER, IN THE ORIGINAL GOVERNMENT SURVEY, SET A POST AND MARKED BEARING TREES.
- 1908 DEC. J. CURO, SURVEYOR, SET A 7/8" DIA. IRON, 2 FEET LONG, USING STUMPS OF THE ORIGINAL BEARING TREES TO ESTABLISH THE CORNER LOCATION. SURVEY RECORD BOOK A PAGE 319
- 1910 SEPT. CURO REMOVED HIS 7/8" DIA. PIPE AND REPLACED IT WITH AN 8 X 8 X 36 INCH CEMENT POST (SEE SURVEY RECORD 156). SURVEY RECORD BOOK A PAGE 325
- UNDATED ROAD SURVEY RECORD NO. 469 IN COUNTY BOOK C, PAGE 477, INDICATES A 2" X 4' IRON MONUMENT.
- 1922 MAY ASS'T HIGHWAY ENGINEER C.J. BARK FOUND A 6 X 6 INCH CONCRETE MONUMENT. CORNER CERTIFICATE IN CCSO
- 1932 APRIL CURO SET A RR SPIKE OVER THE OLD 8 X 8 X 36 CONCRETE BLOCK. CURO BOOK 164 PAGE 64
- 1989 OCT WALTER CURO, LS NO. 11395, MADE REFERENCE TIES TO THE CORNER CURO BOOK 325, PAGE 18
- 1998 CASS COUNTY SURVEYOR'S OFFICE (CCSO) FOUND A 2" ALUMINUM CAP, DOWN 0.4 IN BIT., ON C/L-C/L. 3 REFERENCE TIES WERE TAKEN
- 2002 SEPT. CCSO LOCATED A SPIKE IN ALUMINUM CAP, DOWN 0.4, ON CL-CL.
- 2006 DEC. JARRETT LEAS, LS NO. 42619, KRAMER LEAS DELEO, INC. (KLD), RECORDED THE PLAT OF LONE JACK PINE ON WHICH IS SHOWN A SECTION SUBDIVISION.
- 2012 APRIL DOUG STILLE AND MARVIN KOHOUT, LS NO. 17774, OF KOHOUT LAND SURVEYING, FOUND A 1/2" SOLID PIN IN THE CENTERLINE INTERSECTION OF 44TH STREET SW AND 12TH AVE SW. THE FOUND PIN IS ACCEPTED AS MARKING THE LOCATION OF THE NORTHEAST CORNER OF SECTION 33, T. 137N., R. 29 W.