

CERTIFICATE OF LOCATION OF GOVERNMENT CORNER

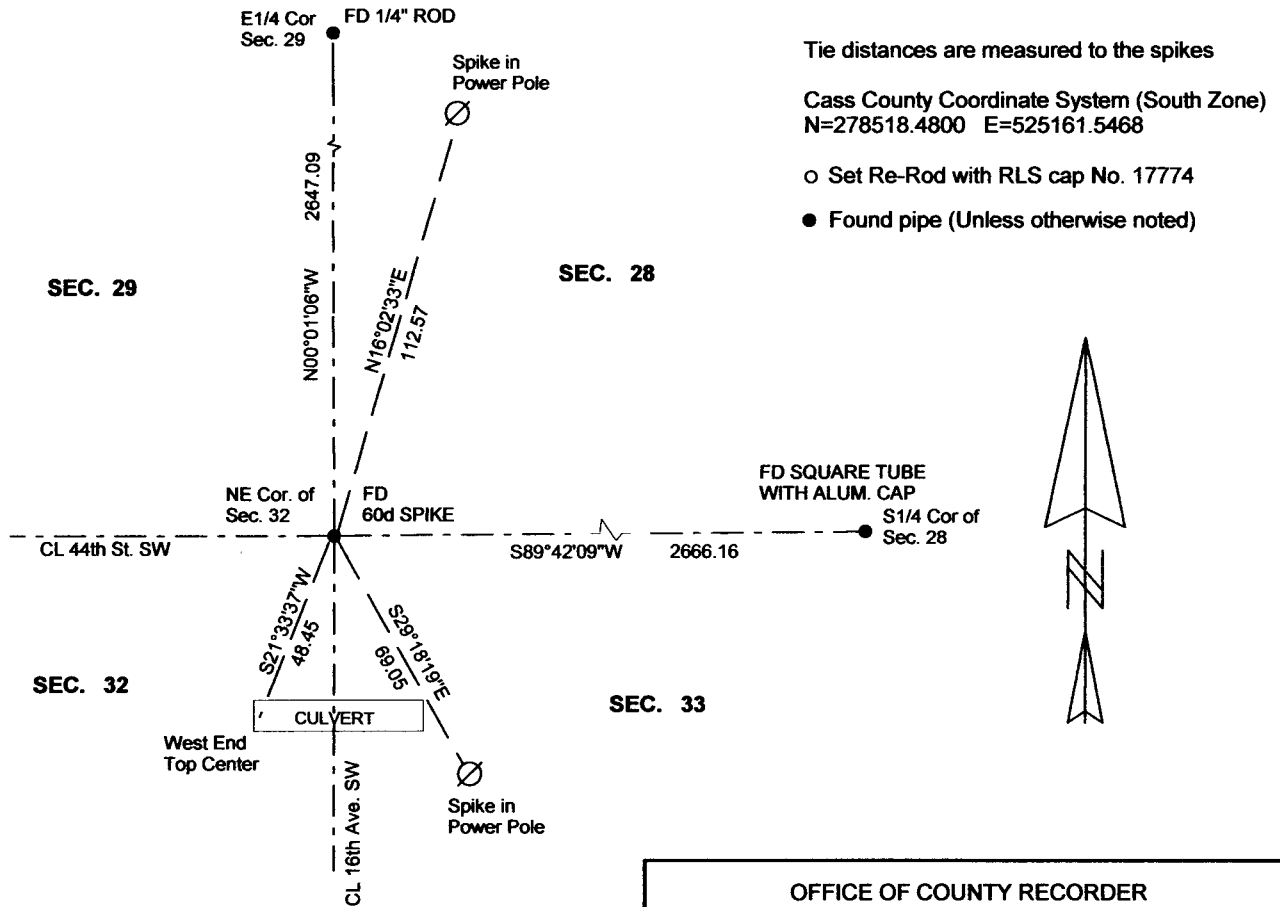
NE Corner of Section 32, Township 137N, Range 29W, 5th p.m., State of Minnesota, County of Cass

At the corner location shown on the sketch:

On 04/09/2012 found a 60d SPIKE, DOWN 0.35, AT CL - CL INTERSECTION
Date

left monument as found lowered monument removed monument (explain)
On _____ placed a _____
Date

SKETCH OF REFERENCE TIES



NOT TO SCALE

Statement of evidence relative to this corner location is on back of page.

I hereby certify that this document and the data contained herein was prepared by me or under my direct supervision.

Marvin R. Kohout 27 SEPT 2012
Marvin R. Kohout Date

Registration No. 17774

Land surveyor

OFFICE OF COUNTY RECORDER



A000591523

OFFICE OF THE COUNTY RECORDER
CASS COUNTY, MINNESOTA
CERTIFIED, FILED, AND/OR
RECORDED ON

4/15/2013 10:52:53 AM

AS DOC #: A000591523

PAGES: 2

REC FEES: 0.00

KATHRYN M. NORBY
CASS COUNTY RECORDER

BY SR _____ Dep

Page 1 of 2 A000591523



INDEX NO. V.0 – 9.0

STATEMENT OF EVIDENCE:

NORTHEAST CORNER OF SECTION 32 TOWNSHIP 137 N., RANGE 29 W.

- 1865 JULY DEPUTY SURVEYOR GEORGE B. WRIGHT, IN THE ORIGINAL GOVERNMENT SURVEY, SET A POST AND MARKED BEARING TREES.
- 1910 SEPT. J.CURO, SURVEYOR, SET AN 8 X 8 X 36 INCH CEMENT POST USING THE ORIGINAL BEARING TREE STUMPS. SURVEY RECORD 156 CURO BOOK A PAGE 325
- UNDATED ROAD SURVEY RECORD NO. 469 IN COUNTY BOOK C, PAGE 477, INDICATES A 2" X 4' IRON MONUMENT.
- 1922 MAY ASS'T HIGHWAY ENGINEER C.J. BARK SET A 6 X 6 INCH CONCRETE MONUMENT AND RECORDED A COR. CERT. WHICH WAS NEVER PROPERLY FILED. ON 7 SEPT. 2012 COUNTY SURVEYOR ROBERT KOVANEN, LS. NO. 16459, RECORDED AN AFFIDAVIT ALONG WITH BARK'S CORNER CERTIFICATE. RECORDER'S DOC. A000583898
- 1927 ASS'T HWY ENG. A.R. TAUBMAN SET A 4"X 4" CON. MON. AND RECORDED A COR. CERT.
- 1941 J.CURO FOUND A 2"X12" IRON PIPE. CURO BOOK D PAGE 266-267
- 1989 OCT FROM CURO BOOK 325, PAGE 18 SKETCH INDICATES CORNER IN PLACE
- 1998 CASS COUNTY SURVEYOR'S OFFICE (CCSO) FOUND A 3"X 3"SQ. CAP, DOWN 0.46' IN THE ROAD BED. CASS CO. CORNER RECORD
- 2006 DEC. JARRETT LEAS, LS, NO. 42619, KRAMER LEAS DELEO, INC., RECORDED THE PLAT OF LONE JACK PINE ON WHICH IS SHOWN A SECTION BREAKDOWN. RECORDER'S DOC. NO. A000521343
- 2012 APRIL DOUG STILLE AND MARVIN KOHOUT, LS NO. 17774, OF KOHOUT LAND SURVEYING, FOUND A ½" SOLID PIN. THE FOUND PIN IS ACCEPTED AS MARKING THE LOCATION OF THE NORTHEAST CORNER OF SECTION 32, T. 137N., R. 29 W