

CERTIFICATE OF LOCATION OF GOVERNMENT CORNER

WC TO THE
 WC TO N1/4 Corner of Section 28, Township 137 N, Range 29 W, 5th p.m., State of Minnesota, County of Cass

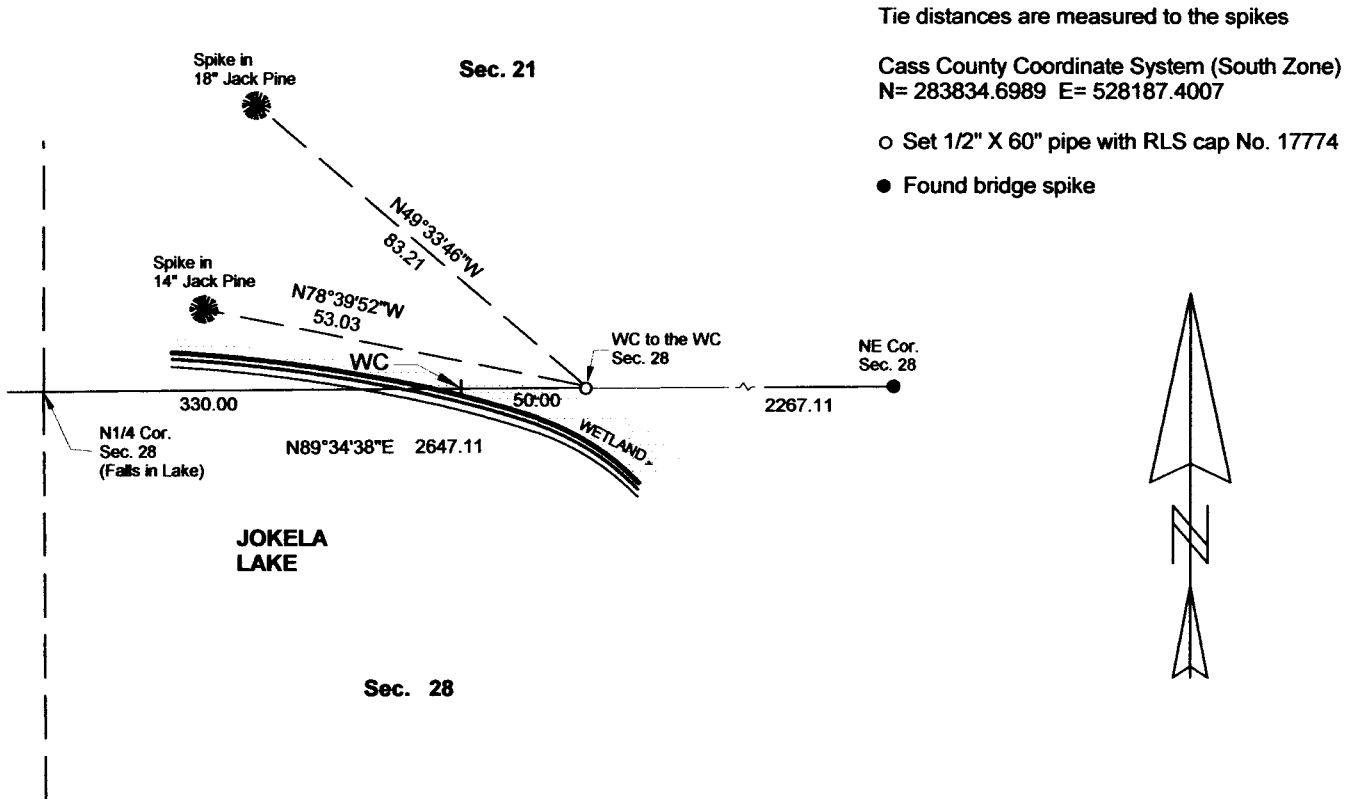
At the corner location shown on the sketch:

On _____ found a _____
 Date _____

_____ left monument as found lowered monument removed monument (explain)

On 09/13/2012 placed a 1/2" X 60" PIPE WITH RLS CAP NO. 17774 ON THE EDGE OF THE WETLAND AS WC TO WC
 Date _____

SKETCH OF REFERENCE TIES



Tie distances are measured to the spikes

Cass County Coordinate System (South Zone)
 N= 283834.6989 E= 528187.4007

○ Set 1/2" X 60" pipe with RLS cap No. 17774

● Found bridge spike

NOT TO SCALE

Statement of evidence relative to this corner location is on back of page.

I hereby certify that this document and the data contained herein was prepared by me or under my direct supervision.

Marvin R. Kohout 27 SEPT 2012
 Marvin R. Kohout Date

Registration No. 17774

Land surveyor

OFFICE OF COUNTY RECORDER



A000591519

**OFFICE OF THE COUNTY RECORDER
 CASS COUNTY, MINNESOTA
 CERTIFIED, FILED, AND/OR
 RECORDED ON**

4/15/2013 10:52:49 AM

AS DOC #: A000591519

PAGES: 2

REC FEES: 0.00

**KATHRYN M. NORBY
 CASS COUNTY RECORDER**

BY SR Dep

Page 1 of 2 A000591519

**INDEX NO. R.0 – 11.1****STATEMENT OF EVIDENCE:****WC TO THE N1/4 OF SECTION 28, TOWNSHIP 137 N., RANGE 29 W.**

- 1865 JULY DEPUTY SURVEYOR GEORGE B. WRIGHT, IN THE ORIGINAL GOVERNMENT SURVEY INDICATED THE N1/4 CORNER FELL IN A POND. HE SET A WITNESS CORNER POST 5 CHAINS EAST.
- 2002 BRUCE GRIVNA LS NO. 17253, CENTRAL MINNESOTA SURVEYING, ON HIS CERTIFICATE OF SURVEY OF PART OF NE1/4-NW1/4 SEC 28, INDICATES THE N1/4 CORNER FALLS IN JOKELA LAKE, CCSO DOCUMENT NO. 1544. DIMENSIONS FOR THE NORTH LINE OF THE NE1/4-NW1/4 ARE GIVEN
- 2004 JARRETT LEAS, LS NO. 42619, KRAMER LEAS DELEO, INC., RECORDED THE PLAT OF ROSEWOOD WHICH SHOWS A SEC. BREAKDOWN DOCUMENT NO. A000492900
- 2006 DEC. JARRETT LEAS, LS NO. 42619, KLD, RECORDED THE PLAT OF LONE JACK PINE ON WHICH IS SHOWN A SECTION BREAKDOWN DOCUMENT NO. A000521343
- 2012 APRIL DOUG STILLE AND MARVIN KOHOUT, LS NO. 17774, OF KOHOUT LAND SURVEYING, ACCEPTED THE POSITION FOR THE N1/4 AS INDICATED IN THE 2002 AND 2006 SURVEYS. NO WITNESS CORNER WAS FOUND IN WETLAND, SET A RE-ROD WITH RLS CAP NO. 17774 ON EDGE OF WETLAND FOR WITNESS CORNER TO THE WITNESS CORNER. TWO REFERENCE TIES TAKEN