

# CERTIFICATE OF LOCATION OF GOVERNMENT CORNER

I hereby certify that this survey, plan, or report was prepared by me or under my direct supervision and that I am a duly Licensed Land Surveyor under the laws of the State of Minnesota.

*Patrick A. Trottier*

PATRICK A. TROTTIER

Date: 1-28-13 License No: 41002  
41002

C  
C  
I  
O  
O  
C  
E



**A000589960**

**OFFICE OF THE COUNTY RECORDER  
 CASS COUNTY, MINNESOTA  
 CERTIFIED, FILED, AND/OR  
 RECORDED ON**

2/26/2013 8:25:27 AM

AS DOC #: A000589960

PAGES: 2

REC FEES: 0.00

**KATHRYN M. NORBY  
 CASS COUNTY RECORDER**

BY SR Dep

NORTHEAST Corner of Section 35, Township 139, Range 28, 5th P.M.

On DEC. 14, 2011 found a 2"Ø IRON PIPE WITH PLUMBER'S CAP, IN SWAMP AT SOUTH END OF LAKE, UP 0.8'

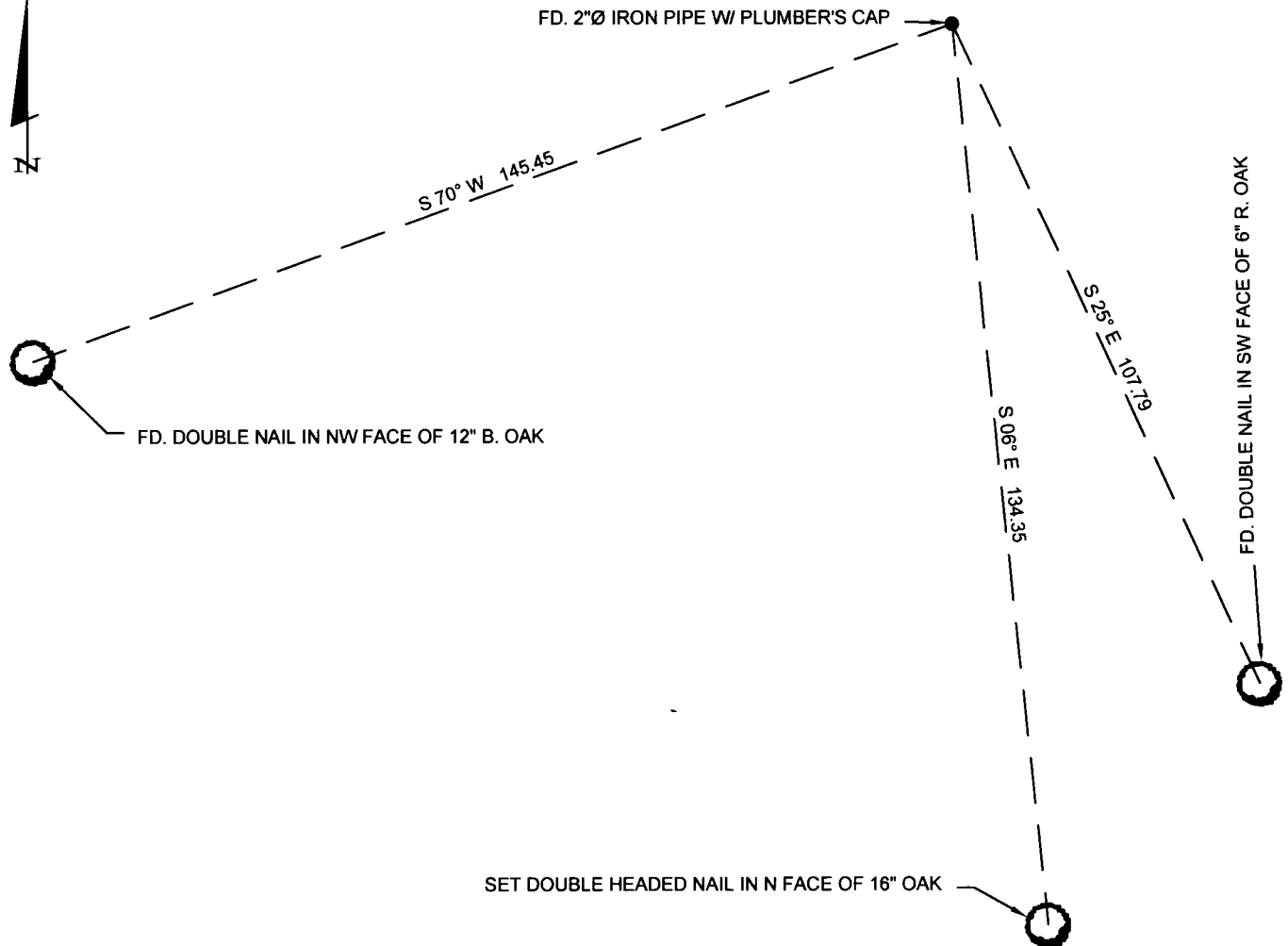
left monument as found,       lowered monument,       removed monument (explain)

On \_\_\_\_\_ placed a \_\_\_\_\_

## SKETCH OF REFERENCE TIES

Corner Index: **V-21**

Not to Scale



Statement of evidence for this corner position is on the back of this page

Page 1 of 2 A000589960



**Statement of Evidence**

**Northeast corner, Section 35, Township 139 North, Range 28 West, 5<sup>th</sup> Principal Meridian, Cass County, Minnesota**

1864 – Original U.S. Government Survey establishing this corner was performed. A wood post was set marking its location from which the following witnesses were established:

8” W. Pine	N 78° E	337 links
10” W. Pine	S 80° E	169 links
10” W. Pine	S 40° W	65 links

1919 - Ben Clark set corner as recorded in Survey Record 434, County Survey Record Book C, page 308. Set pipe over found wood post, noted as being on edge of marsh on south side of small lake, as recorded in said Book C, page 339 with the following witnesses:

9” Poplar	N 9° E	86 feet
7” Poplar	S 70° W	70 feet

1921 – County Resurvey prepared by Ben Clark and filed in the Cass County Recorder’s Office as Document Number 69794 indicates an iron monument.

1939 – Civilian Conservation Corps did not find corner and set an approximate corner at a distance of 5280 feet from east as recorded in Washburn Lake Book 12, page 26 on file with Minnesota Department of Natural Resources, Outing Office.

1940 – Civilian Conservation Corps found iron pipe in swamp at a distance of 2638 feet from north quarter coner Section 36 as recorded in Washburn Lake Book 16, page 2 on file with Minnesota Department of Natural Resources, Outing Office.

2003 – CCSO staff found a 2” ODIP with plumber’s cap, up 0.4’, in swamp at south end of lake and established the following witnesses:

12” B. Oak	S 70° W	145.45 feet
6” R. Oak	S 25° E	107.79 feet

2011 – Patrick Trottier, PLS 41002, found 2” pipe as described in 2003 note above with the two 2003 witnesses intact. Accepted corner as perpetuation of original corner and established the following additional witness:

16” Oak	S 6° E	134.35 feet
---------	--------	-------------