

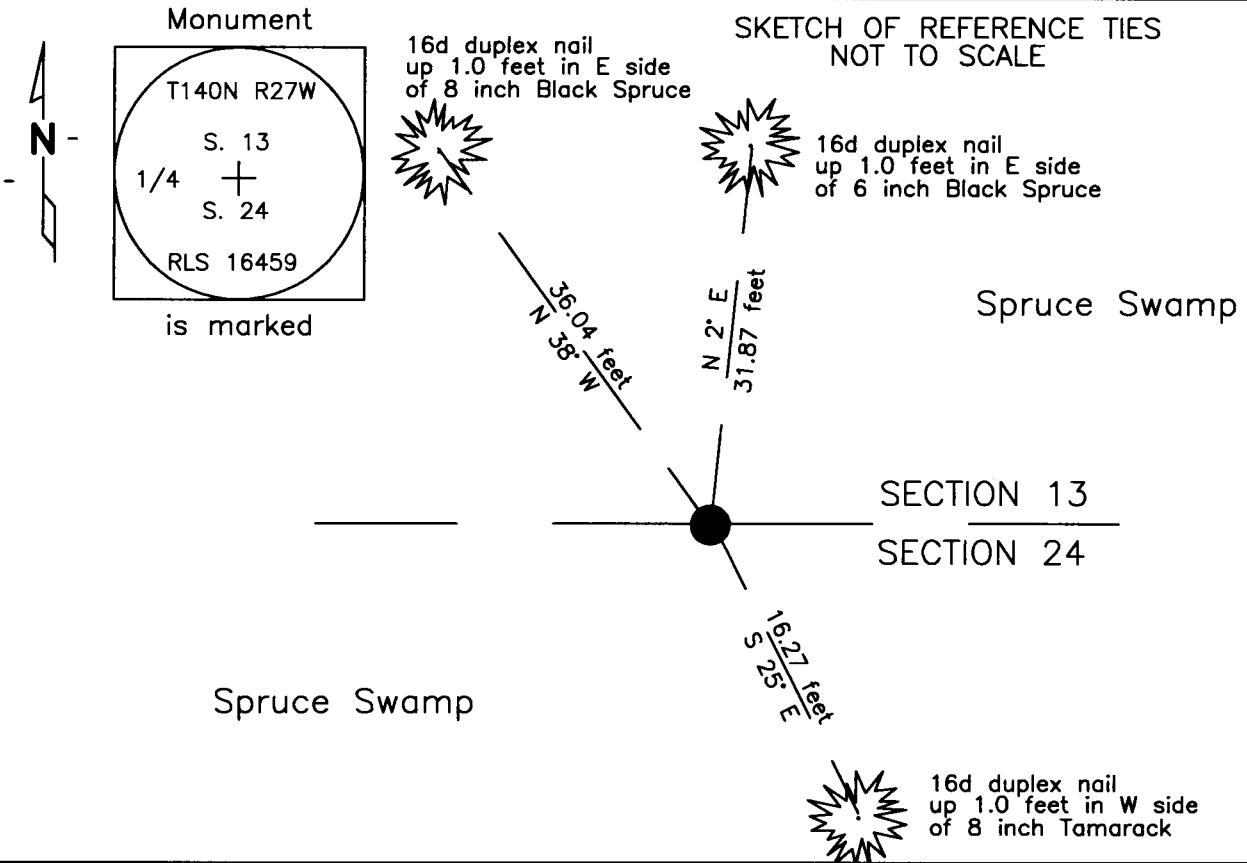
CERTIFICATE OF LOCATION OF GOVERNMENT CORNER

North Quarter Corner of Section 24, Township 140 N., Range 27 W., 5th P.M.

STATE OF MINNESOTA, County of CASS

At the corner location shown on the sketch:

- On 11/27/12 found an iron pipe with a stamped
aluminum cap (RLS 16495), up 0.5 feet in spruce swamp
- left monument as found, lowered monument, removed monument (explain)
- On _____
DATE _____



NAD83 (1996 ADJUSTMENT)
CASS COUNTY NORTH DATUM

N= 147,553.057
E= 544,163.262

Statement of evidence relative to this corner is on back of page

I hereby certify that this document and the data contained herein was prepared by me or under my direct supervision.

Craig E. Johnson 12/12/12
DATE

Registration No. 44530

- Land surveyor,
- County Surveyor,



A000589948

OFFICE OF THE COUNTY RECORDER
CASS COUNTY, MINNESOTA
CERTIFIED, FILED, AND/OR
RECORDED ON

2/26/2013 8:25:15 AM

AS DOC #: **A000589948**

PAGES: 2

REC FEES: 0.00

KATHRYN M. NORBY
CASS COUNTY RECORDER

BY SR _____ Dep

Statement of Evidence:

N-23, North Quarter corner of Section 24, Township 140 North, Range 27 West, 5th Principal Meridian.

- Nov. 1873 F.G. Winston, General Land Office (GLO) Deputy Surveyor in the subdivision of this township set a post for the original corner and referenced it as follows:
- 5" Tam N 10 E 8 links (5.3 feet) 5" Tam S 30 E 8 links (5.3 feet)
- May 1990 D. Landecker (file No. 01490), surveyed several parcels in Section 24, certificate of survey on file at the CCSO shows the north line of Sect 24 as a straight line between the NW & NE corners of said Section 24.
- Dec. 1997 D. Landecker filed a plat (NORTH ISLAND LAKE SHORES) in Section 24, on file at the Cass County Recorders Office, the plat shows the north line of Sect 24 as a straight line between the NW & NE corners of said Section 24.
- June 1998 D. Landecker (file No. 01490-2), surveyed road easement in Section 24, certificate of survey on file at the CCSO shows the north line of Sect 24 as a straight line between the NW & NE corners of said Section 24.
- May 2006 T. Freeman, Landecker & Associates, (file No. 062028), surveyed 2 parcels in Section 24, certificate of survey on file at the CCSO shows the north line of Sect 24 as a straight line between the NW & NE corners of said Section 24.
- Oct 2002 B.Hippen and T.Anderson, technicians, CCSO, notes on file in the CCSO, set a pipe with aluminum capped stamped RLS 16459, at the computed GPS position in a spruce and tamarack swamp. No evidence of the original corner was found. Set reference ties.
- Nov. 2012 G. Duerr found a pipe with a stamped aluminum cap RLS 16459 up 0.5 feet in spuce swamp, Bolton & Menk accepted the found pipe as the corner and verified reference ties set by CCSO in 2002, as depicted on the face of this certificate.