

# CERTIFICATE OF LOCATION OF GOVERNMENT CORNER

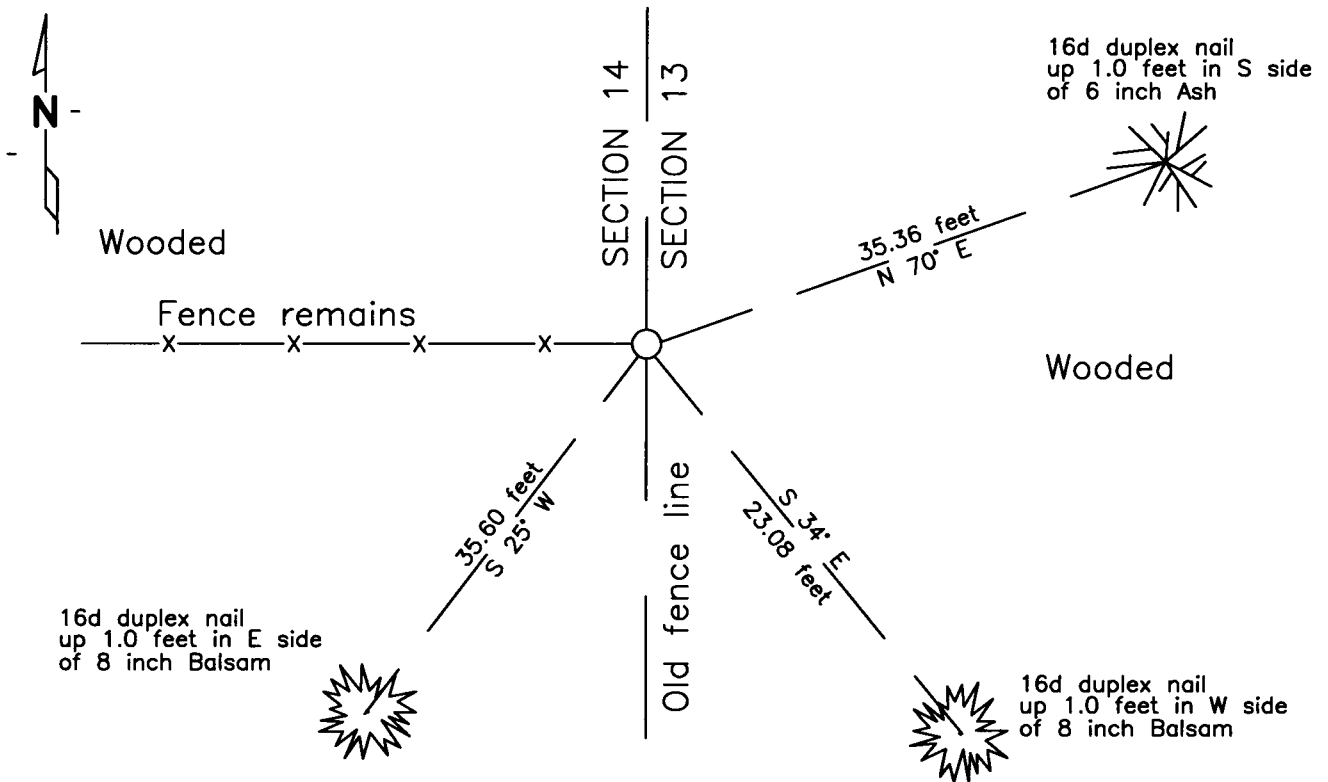
East Quarter Corner of Section 14, Township 140 N., Range 27 W., 5th P.M.

STATE OF MINNESOTA, County of CASS

At the corner location shown on the sketch:

- On 11/27/12 found a 2.5 inch ODIP, up 2.5 feet  
at old fence corner, top broken off.
- left monument as found,  lowered monument,  removed monument (explain)
- On \_\_\_\_\_  
DATE \_\_\_\_\_

SKETCH OF REFERENCE TIES  
NOT TO SCALE



NAD83 (1996 ADJUSTMENT)  
CASS COUNTY NORTH DATUM

N= 150,275.250  
E= 541,733.186

Statement of evidence relative to  
this corner is on back of page

I hereby certify that this document and the  
data contained herein was prepared by me or  
under my direct supervision.

*Craig E. Johnson*  
\_\_\_\_\_  
Craig E. Johnson  
12/12/12  
DATE

Registration No. 44530

- Land surveyor,
- County Surveyor,



**A000589946**

**OFFICE OF THE COUNTY RECORDER  
CASS COUNTY, MINNESOTA  
CERTIFIED, FILED, AND/OR  
RECORDED ON**

2/26/2013 8:25:13 AM

AS DOC #: **A000589946**

PAGES: **2**

REC FEES: **0.00**

**KATHRYN M. NORBY  
CASS COUNTY RECORDER**

BY SR Dep

Statement of Evidence:

L-21, East Quarter corner of Section 14, Township 140 North, Range 27 West, 5th Principal Meridian.

- Nov. 1873 F.G. Winston, General Land Office (GLO) Deputy Surveyor set a post for the original corner and referenced it as follows:
- |                                       |  |
|---------------------------------------|--|
| 5" Tam S 81 E 117 links (77.2 feet)   | 6" Tam N 7415' E 105 links (69.3 feet) |
| 5" Tam S 1945' W 23 links (15.2 feet) | 4" Tam N 830' W 52 links (34.3 feet)   |
- Aug. 1909 J.W. Curo, LS 1428, Cass County Surveyor, Survey Record No. 154, Book A, page 309, on file in the CCSO, states "We find the NW tree down and out at the roots, the one root still hangs, from which we set a good 8 foot cedar post 4X4 drove well into the swamp with new bearing trees as follows:"
- |                           |                                 |
|---------------------------|---------------------------------|
| 4" Balsam S 16° E 75 feet | 4" Balsam S 61° 5' W 43.10 feet |
|---------------------------|---------------------------------|
- April 1910 J.W. Curo, LS 1428 and A.W. Moulster, CCSO, microfilm roll 11, book 91, page 7, on file in the CCSO, states "Beg. at Sta. 0.0, 32.60 feet East of  $\frac{1}{4}$  post on E. side of 14-140-27. We continue my old transit line North."
- Sept.G.1911 Snell, Assistant County Surveyor, Survey Record No. 154, Book A, page 311, on file in the CCSO, states "pulls up the true corners and puts in their place, a good galvanized iron monuments 2.1/2 by 48 inches in size, set in a bed of cement and concrete at the following points:" This corner is listed as one of these points.
- June 2001 B.Hippen and E.Shelly, technicians, CCSO, notes on file in the CCSO, found 2.5" ODIP, up 2.5', plumbers cap broken, at old fence corner. Set reference ties.
- Nov. 2012 G. Duerr found a 2 1/2" pipe up 2,5 feet, Bolton & Menk accepted the found pipe as the corner and verified reference ties set by CCSO in 2001, as depicted on the face of this certificate.