

CERTIFICATE OF LOCATION OF GOVERNMENT CORNER

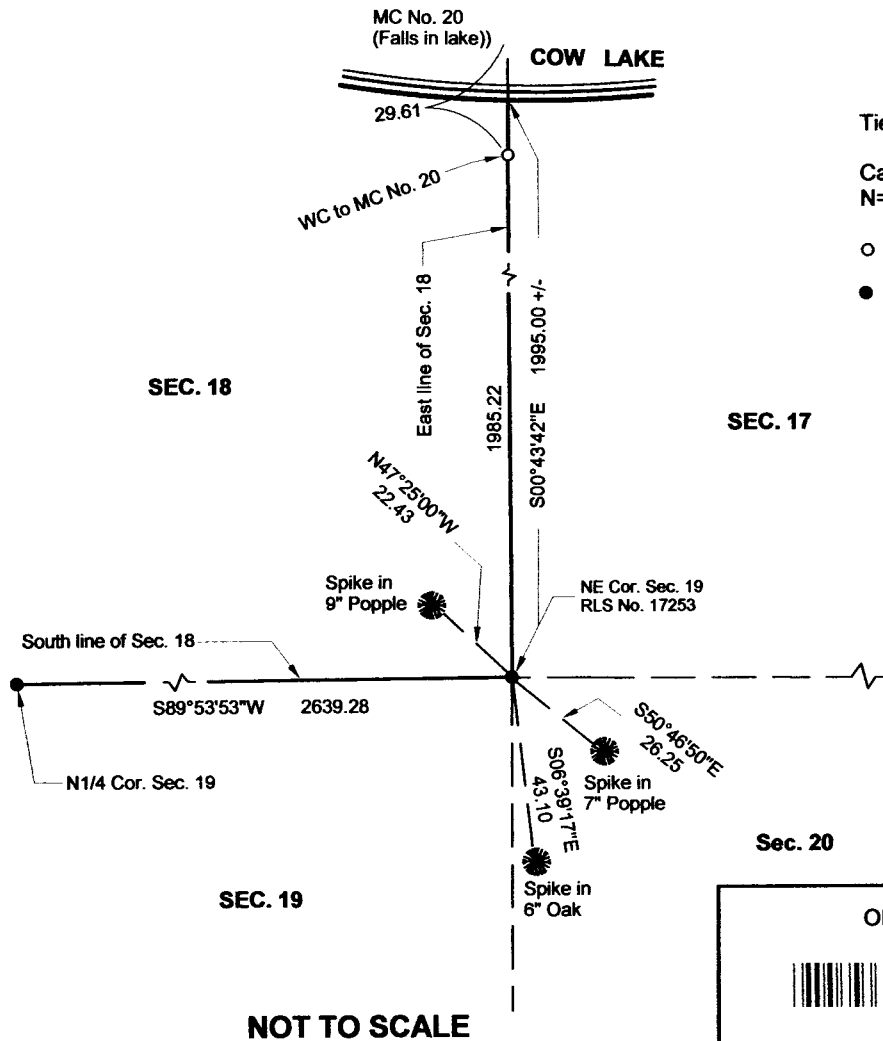
NE Corner of Section 19, Township 138N, Range 30W, 5th p.m., State of Minnesota, County of Cass

At the corner location shown on the sketch:

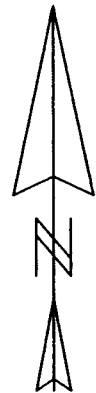
On 04/12/2012 found a 1/2" PIPE WITH RLS CAP NO. 17253, 56' +/- NORTH OF EDGE OF FIELD
 Date

left monument as found lowered monument removed monument (explain)
 On _____ placed a _____
 Date

SKETCH OF REFERENCE TIES



Tie Distances are measured to the spikes.
 Cass County Coordinate System (South Zone)
 N= 320907.1730 E= 488068.8590
 ○ Set Re-Rod with RLS cap No. 17774
 ● Found Pipe



NOT TO SCALE

Statement of evidence relative to this corner location is on back of page.

I hereby certify that this document and the data contained herein was prepared by me or under my direct supervision.

Marvin R. Kohout 21 SEPT 2012
 Marvin R. Kohout Date

Registration No. 17774

Land surveyor

OFFICE OF COUNTY RECORDER



A000588620

**OFFICE OF THE COUNTY RECORDER
 CASS COUNTY, MINNESOTA
 CERTIFIED, FILED, AND/OR
 RECORDED ON**

1/10/2013 10:56:26 AM

AS DOC #: A000588620

PAGES: 2

REC FEES: 0.00

**KATHRYN M. NORBY
 CASS COUNTY RECORDER**

BY SR Dep





INDEX NO. N.0 – 5.0
STATEMENT OF EVIDENCE:

NORTHEAST CORNER OF SECTION 19, TOWNSHIP 138 N., RANGE 30 W., 5TH P.M.

- 1865 DEPUTY SURVEYOR THOMAS B. WALKER IN THE ORIGINAL GOVERNMENT SURVEY SET A POST AND MARKED BEARING TREES.
- 2002 BRUCE GRIVNA, LS NO. 17253, OF CENTRAL MINNESOTA SURVEYING INC., BRAINERD OFFICE, CERTIFICATE OF SURVEY FOR MIKE ORTH. HE PROVIDED A SECTION BREAKDOWN WORKSHEET INDICATING A POSITION FOR THIS CORNER. SEE SURVEY RECORD NO. 4149
- 2011 PATRICK TROTTIER, LS NO. 41002, STONEMARK LAND SURVEYING, ON HIS CERTIFICATE OF SURVEY INDICATES A FOUND 1/2" PIPE WITH RLS CAP NO. 17253. SURVEY RECORD 4633 TROTTIER RECORDED A CERTIFICATE OF LOCATION FOR THE NORTH QUARTER CORNER OF SECTION 19 DOCUMENT A000568491 IN HIS STATEMENT OF EVIDENCE HE EXPLAINS HOW GRIVNA ESTABLISHED THE POSITION OF THE NORTHEAST CORNER OF SECTION 19
- 2012 APRIL DOUG STILLE AND MARVIN KOHOUT, LS NO. 17774, OF KOHOUT LAND SURVEYING, FOUND A 1/2" IRON PIPE WITH RLS CAP NO. 17253. THE FOUND PIPE IS ACCEPTED AS MARKING THE POSITION OF THE NORTHEAST CORNER OF SECTION 19, T. 138 N., R. 30 W. THREE REFERENCE TIES WERE ESTABLISHED