

# CERTIFICATE OF LOCATION OF GOVERNMENT CORNER

N1/4 Corner of Section 19, Township 138N, Range 30W, 5th p.m., State of Minnesota, County of Cass

At the corner location shown on the sketch:

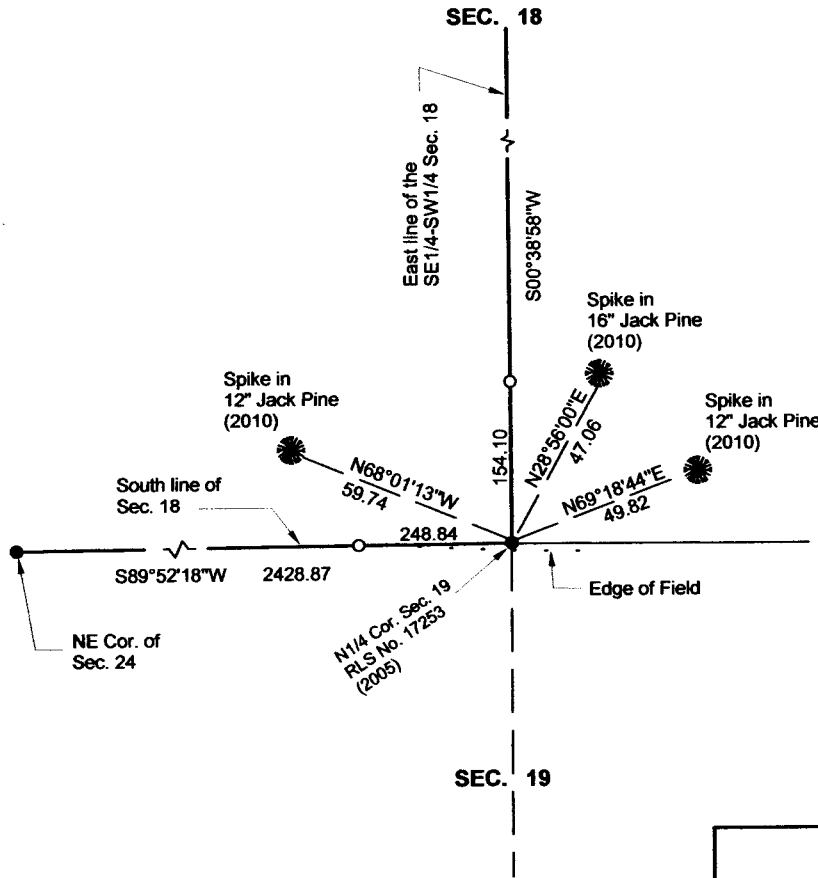
On 04/12/2012 found a 1/2" PIPE WITH RLS CAP NO. 17253, THE CORNER IS ON NORTH EDGE OF  
Date

EDGE OF FIELD, 16' +/- SOUTH OF TREE LINE

left monument as found                      lowered monument                      removed monument (explain)

On \_\_\_\_\_ placed a \_\_\_\_\_  
Date

### SKETCH OF REFERENCE TIES



Tie Distances are measured to the spikes.

Cass County Coordinate System (South Zone)  
N= 320902.4710 E= 485429.5820

o Set Re-Rod with RLS cap No. 17774

● Found Pipe



**NOT TO SCALE**

Statement of evidence relative to this corner location is on back of page.

I hereby certify that this document and the data contained herein was prepared by me or under my direct supervision.

Marvin R. Kohout 21 SEPT 2012  
Marvin R. Kohout Date

Registration No. 17774

Land surveyor

OFFICE OF COUNTY RECORDER



**A000588619**

OFFICE OF THE COUNTY RECORDER  
CASS COUNTY, MINNESOTA  
CERTIFIED, FILED, AND/OR  
RECORDED ON

1/10/2013 10:56:25 AM

AS DOC #: A000588619

PAGES: 2

REC FEES: 0.00

KATHRYN M. NORBY  
CASS COUNTY RECORDER

BY SR Dep





**INDEX NO. N.0 – 3.0**  
**STATEMENT OF EVIDENCE:**

**NORTH QUARTER CORNER OF SECTION 19, TOWNSHIP 138 N., RANGE 30 W., 5<sup>TH</sup> P.M.**

- 1865      DEPUTY SURVEYOR GEORGE B. WRIGHT IN THE ORIGINAL GOVERNMENT SURVEY SET A POST AND MARKED BEARING TREES.
  
- 2001      B. GRIVNA, LS NO. 17253, OF CENTRAL MINNESOTA SURVEYING INC., BRAINERD OFFICE, CERTIFICATE OF SURVEY FOR MIKE ORTH. HE PROVIDED A SECTION BREAKDOWN WORKSHEET INDICATING A POSITION FOR THIS CORNER. SEE SURVEY RECORD NO. 4149
  
- 2010      PATRICK TROTTIER, LS NO. 41002, STONEMARK LAND SURVEYING, FOUND A 1/2" IRON PIPE WITH RLS CAP NO. 17253. HE RECORDED A CORNER CERTIFICATE THAT IS FILED AS DOCUMENT A000568491 IN THE CASS COUNTY RECORDER'S OFFICE. THE CERTIFICATE SHOWS 3 REFERENCE TIES.
  
- 2011      TROTTIER, LS NO. 41002, STONEMARK LAND SURVEYING, ON HIS CERTIFICATE OF SURVEY INDICATES A FOUND 1/2" PIPE WITH RLS CAP NO. 17253. SURVEY RECORD 4633
  
- 2012 APRIL      DOUG STILLE AND MARVIN KOHOUT, LS NO.17774, OF KOHOUT LAND SURVEYING, USING TROTTIER'S 2010 TIES, FOUND A 1/2" PIPE WITH RLS CAP NO, 17253. THE FOUND 1/2" PIPE IS ACCEPTED AS MARKING THE LOCATION OF THE NORTH QUARTER CORNER OF SECTION 19, T. 138 N., R. 30 W.