



A000584822

OFFICE OF THE COUNTY RECORDER
CASS COUNTY, MINNESOTA
CERTIFIED, FILED, AND/OR
RECORDED ON

9/27/2012 11:02:58 AM

AS DOC #: A000584822

PAGES: 2

REC FEES: 0.00

KATHRYN M. NORBY
CASS COUNTY RECORDER
BY SR _____ Dep

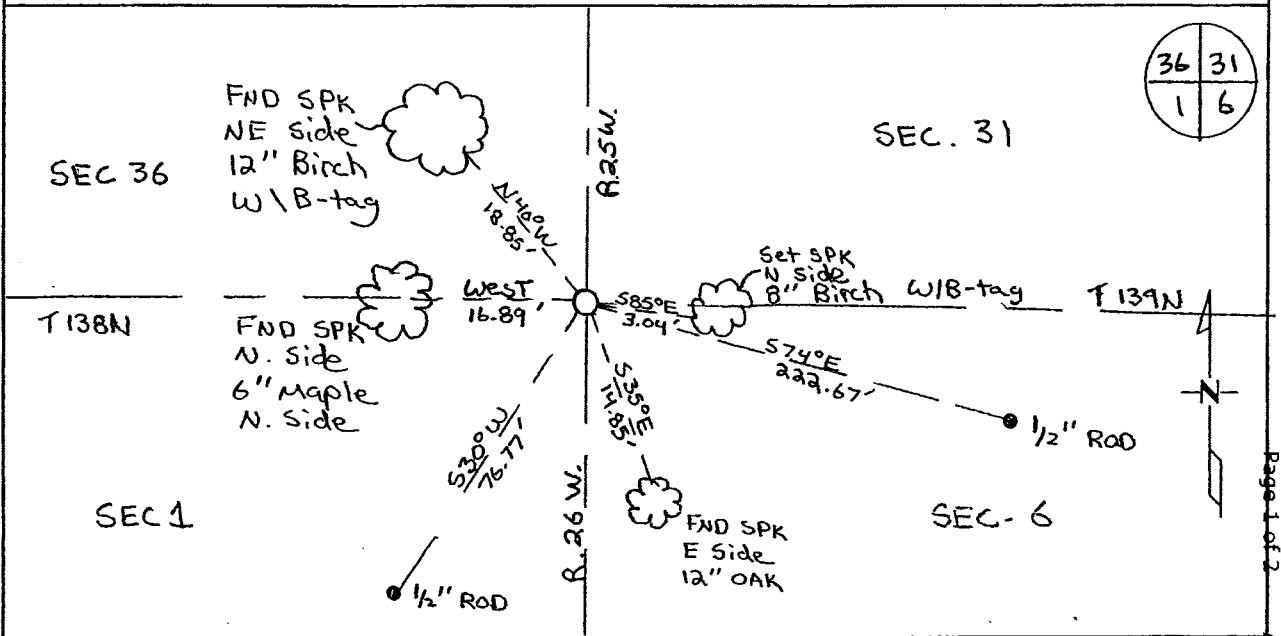
Index Number Z.O-25.0

CERTIFICATE OF LOCATION OF GOVERNMENT CORNER

SouthEast Corner of Section 36, Township 139, Range 26
5TH Principal Meridian, State of Minnesota, County of Cass

At the corner location shown on the sketch:

- On 4/2011 found a Telspar Monument
- left monument as found lowered monument removed monument (explain)
- On 4/2011 placed on 3.5" Brass capped monument
Stamped CASS CTY RLS 43932. In same location as Telspar



Statement of evidence for this corner location is on back of this page.

I hereby certify that this document was researched and prepared by me or under my direct supervision and that I am a licensed Land Surveyor under the laws of the State of Minnesota.

Signature
Chris Hoglund, PS
License No. 43932

Date: 9/11/12





Statement of Evidence:

Southeast Corner of Section 36, Township 139 North, Range 26 West, Crooked Lake Township, 5th Principal Meridian, Cass County, Minnesota.

1863 Original US General Land Office survey by Johnson and Thorton, set a wood post and bearing trees noted as:

20" White Pine	S 59° E	17 links
7" White Birch	N 58° E	14 links
8" White Birch	S 20° W	21 links
6" Black Oak	N 79° W	29 links

1922 John Curo, Crow Wing County Surveyor, found no evidence of the corner, he set a 2"x20" stake for a temporary corner, filed in Crow Wing County Book A, Page 81.

1937 CCC set approximate 1 mile post 80 chains from west and filed in Washburn Lake Book 1 Page 16. Also set approximate corner 80 chains from north and filed in Book 2 Page 15.

1993 Anthony Kerick, Crow Wing County Surveyor, searched the area thoroughly and found no evidence of the corner or its accessories.

1994 Anthony Kerick (Crow Wing County Surveyor), Registered Land Surveyor Number 12266, set a 2"x3' steel tube (square) and aluminum cap at a proportional distance from the Northeast Corner of Section 36, T. 139, Range 26, and filed Crow Wing County Corner Certificate Document No. 477943, dated February 22, 1995. Reference ties:

6" Birch	S 85° E	3.04 feet
9" Red Oak	S 35° E	14.85 feet
8" Birch	N 40° W	18.85 feet
4" Maple	West	16.89 feet
GPS Eccentric	S 30°04'29" W (CWC)	76.77 feet

No Date Coordinates as follows from Cass County North 1996 adjustment:

N: 100057.527 E: 578585.117

2011 Westwood Professional Services, Inc. found Kerick's Aluminum Capped Monument and all of his reference ties, removed monument, set a 5/8"x24" rebar with a 3.5" brass cap, located set monument with a 20 minutes static GPS shot and verified coordinates with VRS GPS observation. Buried existing Kerrick monument next to set Brass Cap. Analysis of the recovered data, field evidence and survey measurements, indicates that the monument found by Westwood Professional Services, Inc is the accepted location for this corner.

Cass County Coordinates South Zone obtained by static GPS (NAD 83, 1996 Adj)

N: 336459.96

E: 641198.33

Central State Plane Coordinate

N: 985877.48

E: 2711589.91