



A000583962

OFFICE OF THE COUNTY RECORDER  
CASS COUNTY, MINNESOTA  
CERTIFIED, FILED, AND/OR  
RECORDED ON

9/10/2012 9:09:01 AM

AS DOC #: A000583962

PAGES: 2

REC FEES: 0.00

KATHRYN M. NORBY  
CASS COUNTY RECORDER

BY SR Dep

Index Number A.O-25.0

# CERTIFICATE OF LOCATION OF GOVERNMENT CORNER

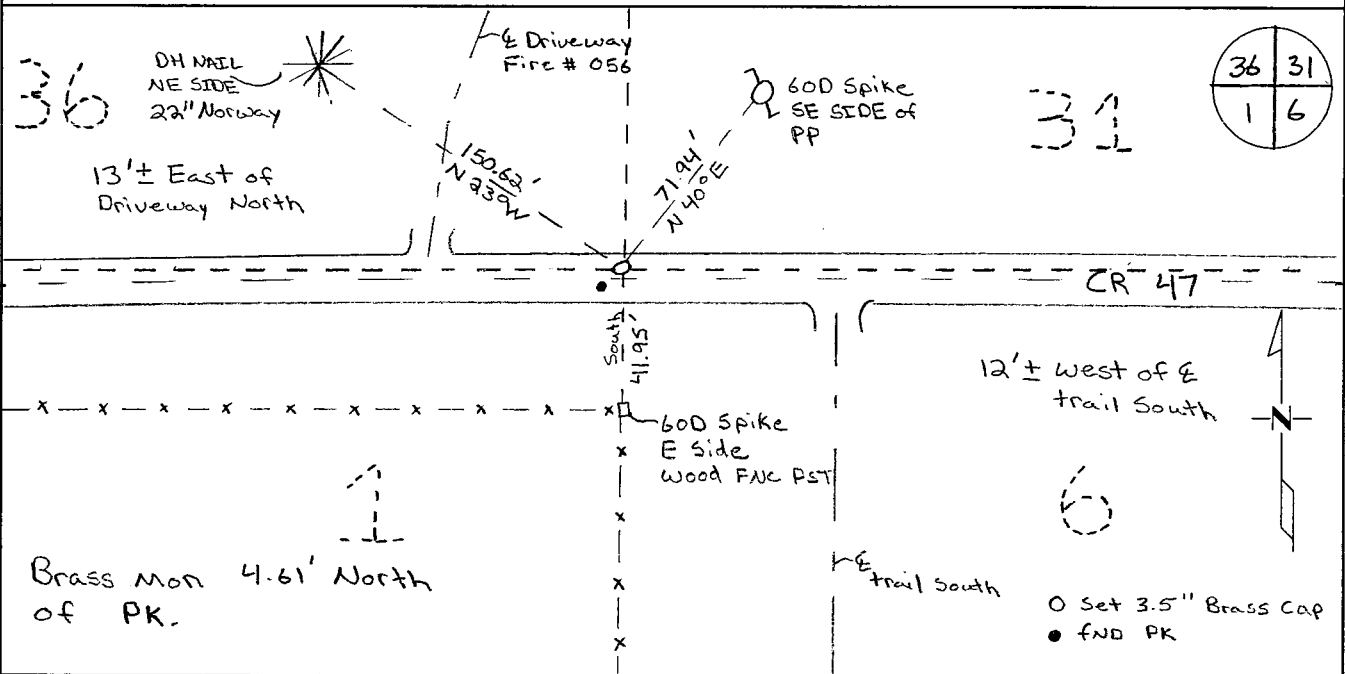
Northeast Corner of Section 1, Township 139, Range 29  
5TH Principal Meridian, State of Minnesota, County of Cass

At the corner location shown on the sketch:

On 1-13-11 found a 2.5" Capped Iron Pipe Down 1.7'

left monument as found     lowered monument     removed monument (explain)

On 1-13-11 placed an 2' Long Rebar with 3.5" Brass Cap  
Stamped Cass County RLS 43932 over top of Monument



Statement of evidence for this corner location is on back of this page.

I hereby certify that this document was researched and prepared by me or under my direct supervision and that I am a licensed Land Surveyor under the laws of the State of Minnesota.

Signature [Handwritten Signature]  
Chris Hoglund, PS  
License No. 43932

Date: 7/19/12





**Statement of Evidence:**

Northeast Corner of Section 1, Township 139 North, Range 29 West, Ponto Lake Township, 5<sup>th</sup> Principal Meridian, Cass County, Minnesota.

- 1865 Original US General Land Office survey by Wright and Walker, set a wood post and bearing trees noted as:
- |                |         |          |
|----------------|---------|----------|
| 11" Soft Maple | N 88° E | 20 links |
| 6" Soft Maple  | S 37° E | 39 links |
| 6" White Birch | S 8° W  | 27 links |
| 8" Black Oak   | N 66° W | 22 links |
- 1911 A.W. Moulster set spruce hub, filed in Book 049\_1, pages 37 and 42
- 1912 A.W. Moulster found stake set by Curo from Old Gov't B.T.s and filed in County Survey Record Book "A" Page 508-513, Survey Record No. 205. Reference ties:
- |                |            |            |
|----------------|------------|------------|
| 10" Poplar     | N 62°43' E | 53.98 feet |
| 7" Norway Pine | N 25°27' W | 41.40 feet |
| 8" Norway Pine | S 32°31' W | 54.16 feet |
- 1919 Ben Clark found Poplar hub. Set 2 1/2x36" iron pipe and filed in County Book "C" Page 331 & 333, Survey Record No. 434. Reference ties:
- |                  |         |           |
|------------------|---------|-----------|
| 10" Norway Pine  | S 40° W | 82 feet   |
| 10" Poplar Stump | N 20° E | 24.7 feet |
- 1939 CCC at 5280' from east set approximate corner and filed in Washburn Lake Book 12 Page 40.
- 1979 Cass County Highway Department found 2" I.P. in place and filed – Co. Rd. #47.
- 1983 Terry Freeman, Cass County Survey Technician, found 2" I.P., 5.2' north of centerline. Reference ties:
- |          |    |           |
|----------|----|-----------|
| 5" Maple | NE | 87.7 feet |
| 6" Maple | N  | 72.7 feet |
| 3" Maple | NW | 89.3 feet |
- 2000 Cass County Surveyors Office found in place: mag. nail located 1' north C.R. 47, 14 feet west centerline Rd south, 12 feet east centerline driveway. Reference ties:
- |                       |         |             |
|-----------------------|---------|-------------|
| 19" Norway Pine       | N 23° W | 153.01 feet |
| Power Pole (tag)      | N 40° E | 76.32 feet  |
| Tel. Ped.             | S 8° W  | 36.55 feet  |
| 15" CMP (P.K. E. end) | S 40° E | 46.88 feet  |
- 2002 Cass County Surveyors Office found a 2" iron pipe with cap down 1.8 feet, 5.2 feet north of the centerline.
- 2011 Westwood Professional Services, Inc. found 1919 Clark 2" iron pipe, as perpetuated from GLO bearing trees, with cap in place, set from original G.L.O bearing trees. Set a 5/8"x24" Rebar with 3.5" Brass Cap over existing 2" iron Pipe. Located set monument with a 20 minutes static GPS shot and verified coordinates with VRS GPS observation, which agree with the 2002 position. Analysis of the recovered data, field evidence and survey measurements, indicates that the monument found by Westwood Professional Services, Inc is the correct perpetuation of this corner.
- Cass County Coordinates North Zone obtained by static GPS (NAD 83, 1996 Adj)  
N: 132096.12  
E: 484522.63
- State Plane Coordinate:  
N: 1017874.93  
E: 2617524.96