



A000583960

OFFICE OF THE COUNTY RECORDER  
CASS COUNTY, MINNESOTA  
CERTIFIED, FILED, AND/OR  
RECORDED ON

9/10/2012 9:08:59 AM

AS DOC #: A000583960

PAGES: 2

REC FEES: 0.00

KATHRYN M. NORBY  
CASS COUNTY RECORDER

BY SR \_\_\_\_\_ Dep

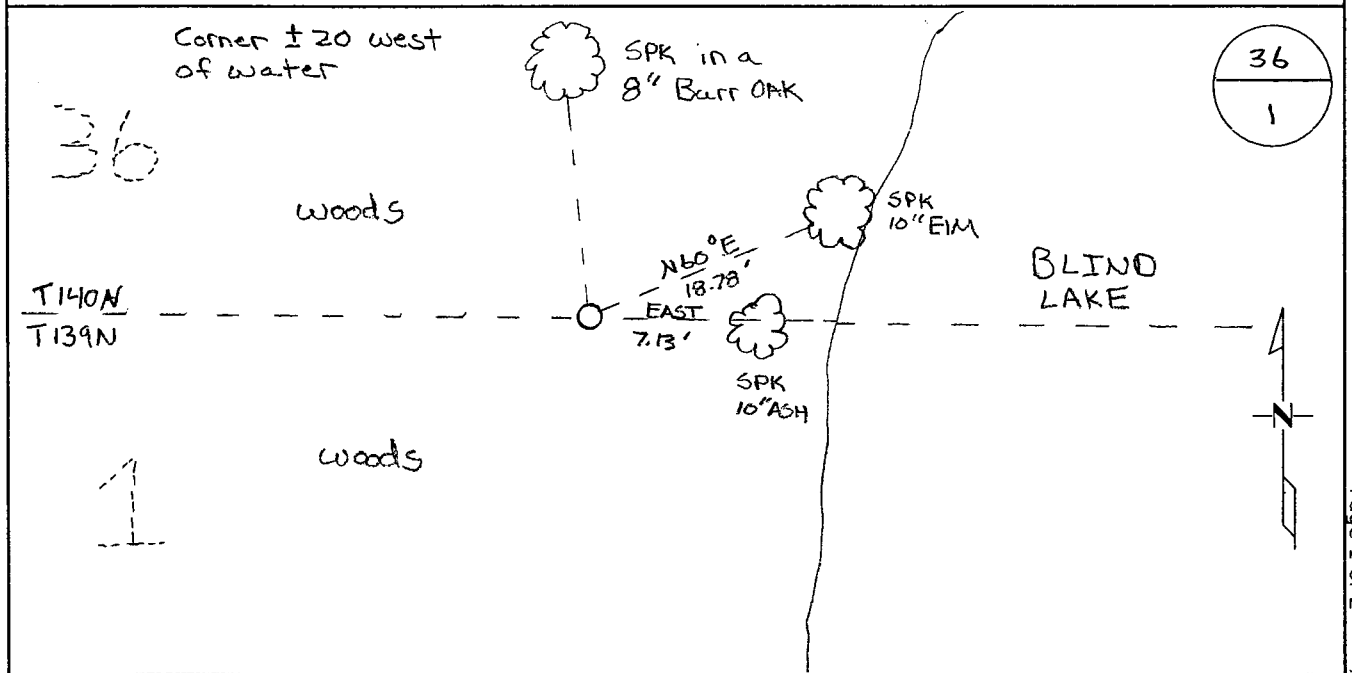
Index Number A.O - 24.6

### CERTIFICATE OF LOCATION OF GOVERNMENT CORNER

MC # 12 NORTH LINE Corner of Section 1, Township 139, Range 30  
5TH Principal Meridian, State of Minnesota, County of Cass

At the corner location shown on the sketch:

- On \_\_\_\_\_ found a \_\_\_\_\_
- left monument as found       lowered monument       removed monument (explain)
- On 6-2011 placed an 1/2" Iron pipe with cap. Stamped  
RLS 43932.



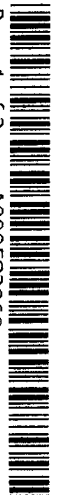
Statement of evidence for this corner location is on back of this page.

I hereby certify that this document was researched and prepared by me or under my direct supervision and that I am a licensed Land Surveyor under the laws of the State of Minnesota.

Signature *Chris Hoglund*  
Chris Hoglund, PS  
License No. 43932

Date: 7/19/12

Page 1 of 2  
A000583960





**Statement of Evidence:**

Meander Corner #12 on the North line of Section 1, Township 139 North, Range 30 West, Powers Township, 5<sup>th</sup> Principal Meridian, Cass County, Minnesota.

1865 Original US General Land Office survey by Wright and Walker, set a wood post and bearing trees noted as:

3" Aspen	S 50° W	62 links
4" Birch	N 30° W	25 links

2011 Westwood Professional Services, Inc. searched the area thoroughly for the original corner and accessories and did not find anything. Searched in all four cardinal directions for Section Corner and accessory information. Contacted Stonemark Land Surveying, Northern Engineering, Minnesota Department of Natural Resources, Cass County Surveyor's Department and Arro Land Surveying for information. Computed the northeast corner of Section 1 based on a double proportioned position. The northeast corner of section 2, Township 139, Range 30 and the Northeast Corner (found 2.5" pipe) of Section 6, Township 139, Range 29 were used for an east-west direction and the east quarter corner (found 2" pipe) of Section 36, Township 140, Range 30 and the Southeast Corner (found 1" iron pipe) of Section 12, Township 139, Range 30 were used for a north-south direction. Computed Meander Corner #12 position based on a single proportion distance between the northeast corner of Township 139, Range 30 and the northeast corner of Section 2, Township 139, Range 30. Set a ½"x14" pipe capped LS 43932. Analysis of the recovered data, field evidence and survey measurements, indicates that the monument set by Westwood Professional Services, Inc is the best position for this corner.

Cass County Coordinates North Zone obtained by VRS GPS (NAD 83, 1996 Adj)

N: 132461.97

E: 451936.14

Central State Plane Coordinate

N: 782425.38

E: 2521793.48