



A000583942

OFFICE OF THE COUNTY RECORDER
CASS COUNTY, MINNESOTA
CERTIFIED, FILED, AND/OR
RECORDED ON

9/10/2012 9:08:41 AM

AS DOC #: A000583942

PAGES: 2

REC FEES: 0.00

KATHRYN M. NORBY
CASS COUNTY RECORDER

BY SR Dep

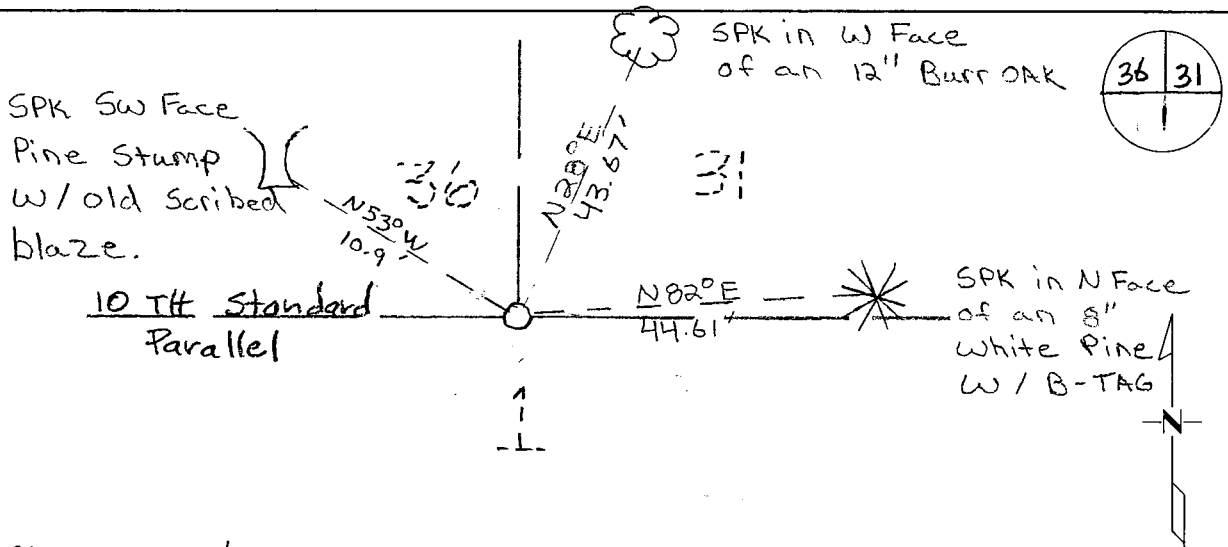
Index Number 20-250

CERTIFICATE OF LOCATION OF GOVERNMENT CORNER

South East Standard Corner of Section 36, Township 141, Range 30
5TH Principal Meridian, State of Minnesota, County of Cass

At the corner location shown on the sketch:

- On 3-18-11 found a 2" Brass cap + a 2" IP with plumbers cap.
- left monument as found lowered monument removed monument (explain)
- On 3-18-11 placed an 3.5" Brass cap Stamped Cass Cty RLS 43932. IN same location as the 2" BRASS CAP



8' Sign PST 4' N
 8' sign PST 4' E
 6' sign PST 4' N

Statement of evidence for this corner location is on back of this page.

I hereby certify that this document was researched and prepared by me or under my direct supervision and that I am a licensed Land Surveyor under the laws of the State of Minnesota.

Signature

[Handwritten Signature]
 Chris Heglund, PS
 License No. 43932

Date:

7/19/12





Westwood Professional Services
Chris Høglund
Minnesota License No. 43932

Statement of Evidence:

Southeast Standard Corner of Section 36, Township 141 North, Range 30 West, Turtle Lake Township, 5th Principal Meridian, Cass County, Minnesota.

- 1863 Original US General Land Office survey by T.B. Walker, set a wood post and bearing trees noted as:

22" Y. Pine	N 33° W	25 links
6" Maple	N 69° E	26 links

- 1916 E.B. Horst found post set by Curo and set I.M., filed in County Book "B" Page 554-558, Survey Record No. 355, also in Curo Book 61, Page 149. Reference ties:

Wit. Pits	North, East, South
-----------	--------------------

- 1925 John M. Greene – notes corner as being 369.1' west of NE 1-140-30, Curo Book Mascot A, page 29

- 1937 C.C.C. found corner, filed at the office of the Cass County Surveyor.

- 1965 U.S. Forest Service records show the following: found 2 inch capped pipe and stump of Pine North 33 degrees West a distance of 16.5 feet. Set a 2 inch by 5 foot capped iron pipe and marked the following bearing trees: an 11 inch Norway Pine North 53 degrees West a distance of 10.9 feet; and a 9 inch Maple North 25 degrees East a distance of 35.9 feet. (Entry derived from Document No. 311857, also in U.S. Forest Service Book 4, Page 171).

- 1969 U.S. Forest Service surveyor, Bill Okerman, Registered Land Surveyor Number 6807, filed corner certificate on August 8, with the Cass County Recorder as certificate number 536, using the 1965 information. (Entry derived from Document No. 311857).

- 1986 U.S. Forest Service crews set an aerial target over this corner position for the determination of coordinate values through the use of GPS on the Chippewa South Boundary Project Cadastral Survey . (Entry derived from Document No. 311857).

- 1988 Gary Stevenson found monument in place, filed at the office of the Cass County Surveyor.

- 1989 David Landecker, Registered Land Surveyor Number 17008, found a 2" brass monument (USFS) and a 2" capped county iron pipe, filed Corner Certificate No. 311857, dated May 3, 1989. Reference ties:

14" White Pine	N 47° W	55.55 feet
9" Birch	N 1° W	68.78 feet
7" Burr Oak	N 28° E	43.67 feet
6" White Pine	N 82° E	44.61 feet

- 2011 Westwood Professional Services, Inc. found 1965 brass capped monument and two 1988 Stevensen Reference Ties. Accepted monument as being a perpetuation of the original GLO Survey. Set 5/8"x 24" rebar with 3.5" Brass cap in the same location as found brass cap monument, reset brass cap monument along set monument. Located set monument with VRS GPS observation. Analysis of the recovered data, field evidence and survey measurements, indicates that the monument found by Westwood Professional Services, Inc is the correct perpetuation of this corner.

Cass County Coordinates North Zone obtained by static GPS (NAD 83, 1996 Adj)
N:164305.60
E: 452384.69

Central State Plane Coordinate
N: 1050067.34
E: 2585375.68